



MESSITER WAY, Dudley, DY1 4SY

Offers In Region Of £259,950

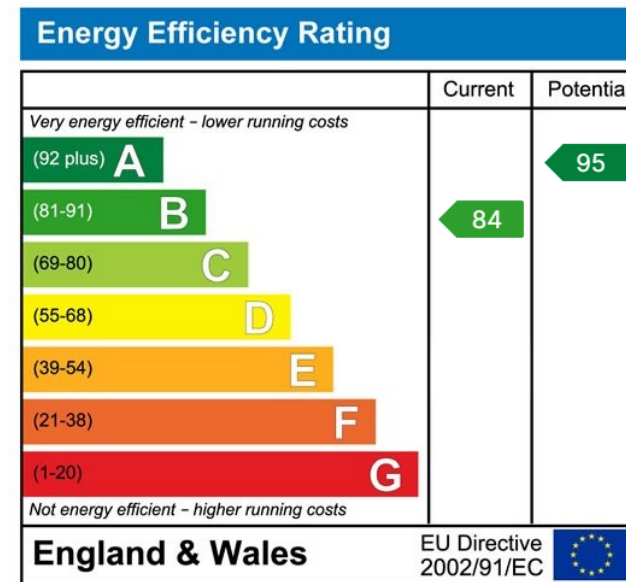
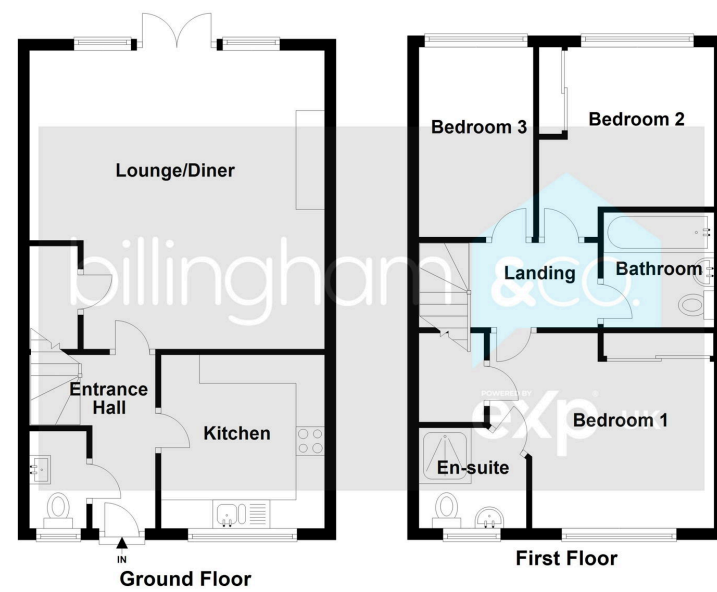
🛏 3 🍴 2 🚗 1

- Occupying a pleasant position upon this modern development.
- Attractive outlook to the front.
- Modern Kitchen, spacious Lounge/Diner, Cloakroom.
- Modern Family Bathroom.
- An early viewing is advised.
- A beautifully presented THREE BEDROOM modern end town house.
- Off road parking for several cars.
- Three well presented Bedrooms, master having an Ensuite.
- Enclosed Rear Garden.
- EPC Rating B.



Occupying a pleasant position upon this modern development, this BEAUTIFULLY presented THREE BEDROOM END TOWN HOUSE is thought an ideal purchase for FTB or a young family, having a modern Kitchen, spacious Lounge/Diner, three spacious Bedrooms, two having fitted wardrobes with the master having an Ensuite, a modern Family Bathroom and a low maintenance Rear Garden. Located within close proximity to local amenities and transport routes this home offers ready to move in living accommodation. An early viewing is essential!





Sales 01384 444 004 / Lettings 01384 445 075
 hello@billingham.properties
 www.billingham.properties



Agents Note: Whilst every care has been taken to prepare these particulars, they are for guidance purposes only. All measurements are approximate and are for general guidance purposes only and whilst every care has been taken to ensure their accuracy, they should not be relied upon and potential buyers are advised to recheck the measurements.