



KENROSE MILL, Kinver, DY7 6LA

Offers In Region Of £350,000

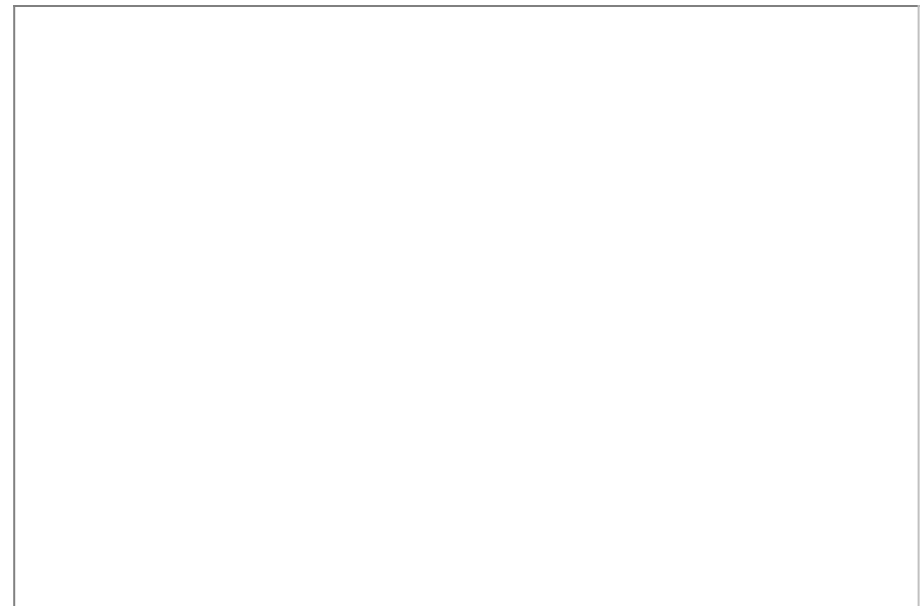
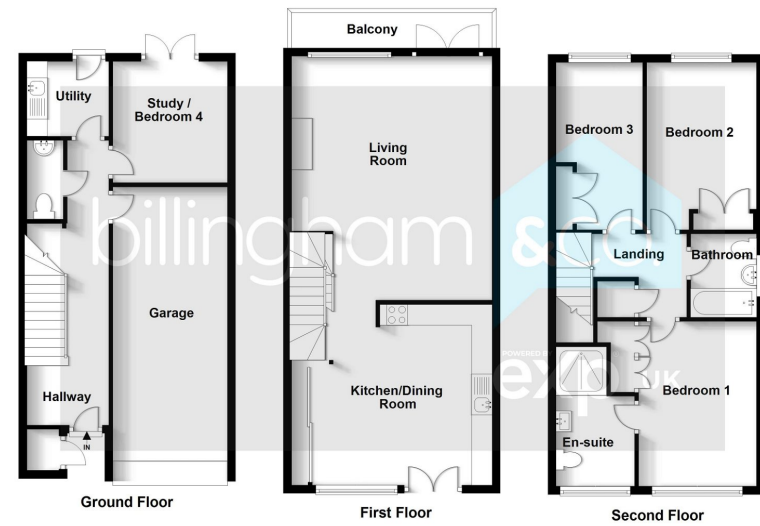
🛏️ 3 🚿 2 🚗 2

- Pleasantly located within this prime Kinver address.
- A few minutes walk into the Village, with the Staffordshire and Worcestershire canal close by
- First Floor - open plan living to include a Living Room, Balcony, Kitchen.
- Pleasant Rear Garden, Garage, Driveway.
- An early and internal viewing is a must
- An impressive three storey end town house offering spacious and versatile living
- Ground Floor - Cloakroom, Study/Bedroom, Utility Room.
- Second Floor - Three Bedrooms, master having an Ensuite, Family Bathroom.
- **HAVING NO UPWARD CHAIN !**
- EPC Rating TBC.



An impressive three storey end town house offering spacious and versatile living accommodation, situated within this prestigious cul-de-sac address backing onto the River Stour with the Staffordshire and Worcestershire canal within walking distance. An early and internal viewing is a must to appreciate the living accommodation on offer, having a well thought out open plan first floor with a Dining Kitchen and a good sized Living Room, having a balcony with scenic views beyond. The versatile accommodation further benefits from having Three Bedrooms to the second floor with the master having an Ensuite Shower Room and an additional Bedroom/Office found to the ground floor. Situated within a few minutes walk of the High Street, having local amenities close at hand. Having NO UPWARD CHAIN, an early viewing is advised.





Sales 01384 444 004 / Lettings 01384 445 075
 hello@billingham.properties
 www.billingham.properties



Agents Note: Whilst every care has been taken to prepare these particulars, they are for guidance purposes only. All measurements are approximate and are for general guidance purposes only and whilst every care has been taken to ensure their accuracy, they should not be relied upon and potential buyers are advised to recheck the measurements.