





## Church Road, Dudley

Offers In Region Of £390,000

🛏️ 4 🚿 2 🛋️ 2

- WONDERFUL FAMILY HOME • SET BACK FROM THE ROAD IN AN ELEVATED POSITION
- GENEROUS LOUNGE • DINING ROOM AND KITCHEN
- MASTER BEDROOM WITH EN-SUITE • THREE FURTHER BEDROOMS
- CONTEMPORARY HOUSE BATHROOM • DETACHED GARAGE (CURRENTLY BEING USED A GAMES ROOM AND BAR!)
- GOOD-SIZED REAR GARDEN • MOVE-IN READY

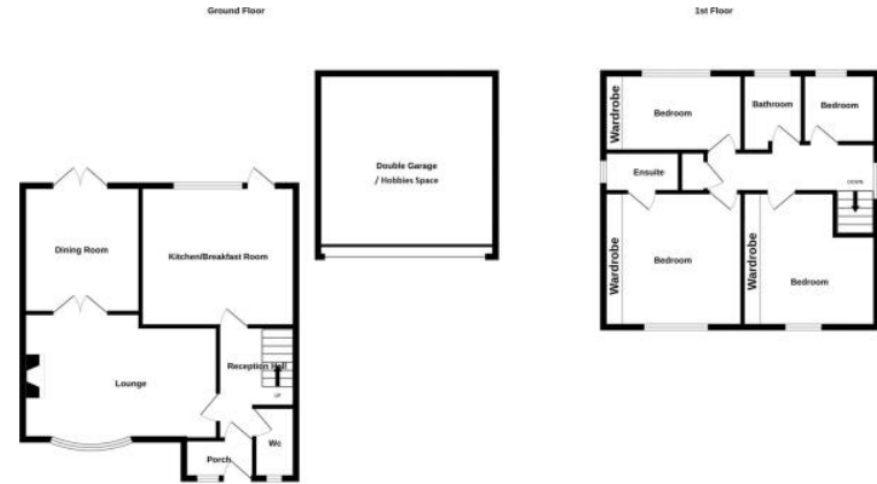


FABULOUS FOUR BED FAMILY HOME Situated close to schools and local amenities, this DETACHED FAMILY HOME is 'MOVE-IN READY'. Sat back from the road in an ELEVATED POSITION offering FAR REACHING VIEWS, a tarmac driveway provides parking for two to three cars. Our approach to the main entrance takes us past the DETACHED GARAGE which is currently being used as a fabulous GAMES ROOM and BAR. The property comprises a welcoming entrance hallway with adjoining guest WC, generous 19 foot long LOUNGE opening to a DINING ROOM, complete with French doors to the rear garden, and a superb KITCHEN DINER to the ground floor; whilst to the first floor, we find a MASTER BEDROOM with bespoke fitted wardrobes and adjoining EN-SUITE shower room, TWO FURTHER DOUBLE BEDROOMS (again with fitted wardrobes), FOURTH SINGLE BEDROOM and a contemporary styled FAMILY BATHROOM. The property is VERY WELL PRESENTED throughout and must be viewed to be fully appreciated.









Score	Energy rating	Current	Potential
92+	A		
81-91	B		
69-80	C		80 C
55-68	D	58 D	
39-54	E		
21-38	F		
1-20	G		

Sales 01384 444 004 / Lettings 01384 445 075  
 hello@billingham.properties  
 www.billingham.properties



Agents Note: Whilst every care has been taken to prepare these particulars, they are for guidance purposes only. All measurements are approximate and are for general guidance purposes only and whilst every care has been taken to ensure their accuracy, they should not be relied upon and potential buyers are advised to recheck the measurements.