



# White Hill, KINVER, DY7 6AU

Offers Over £850,000

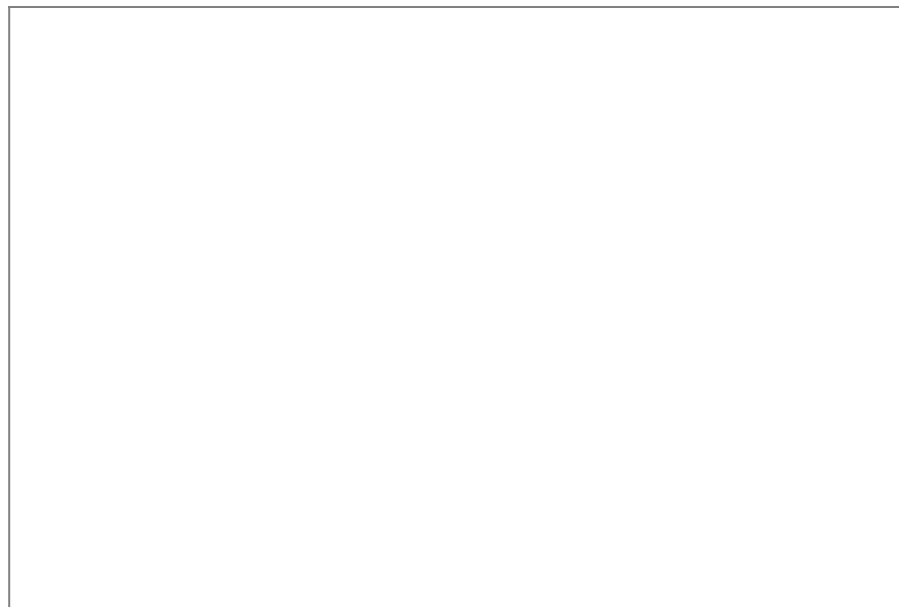
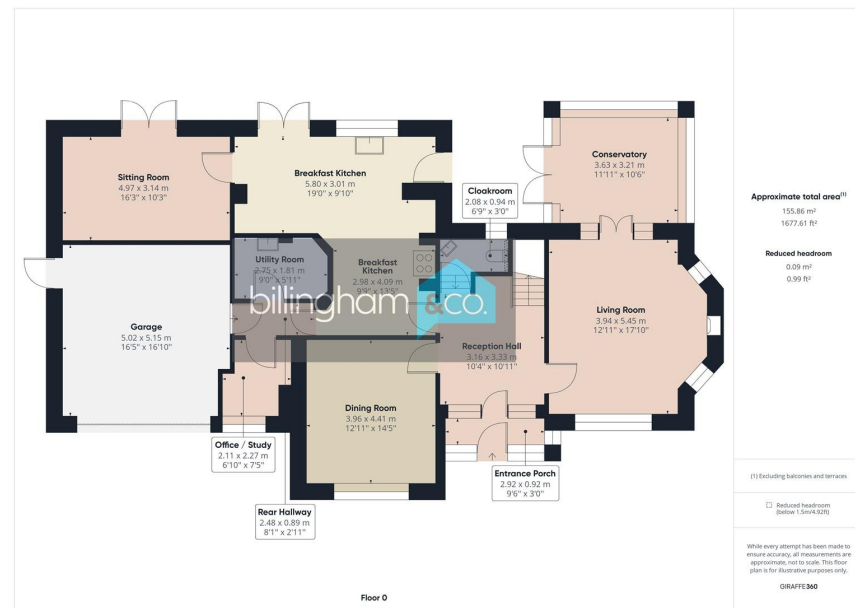
🛏️ 5 🚗 3 🚗 3

- REDUCED BY £100,000 for A QUICK SALE - An IMPOSING and most IMPRESSIVE FIVE BEDROOM DETACHED PREMIUM SEMI RURAL ADDRESS on the outskirts of the THRIVING VILLAGE, surrounded by open COUNTRYSIDE with idyllic walks close at hand.
- Offering almost 3000 SQUARE FOOTAGE of living space.
- Surrounded by open COUNTRYSIDE with idyllic walks close at hand.
- Five Bedrooms, Two having an ensuite.
- EPC Rating D.
- [https://drive.google.com/file/d/1zVXDFPvq8t6KORalzly8TBVN6-dj3DKm/view?usp=drive\\_link](https://drive.google.com/file/d/1zVXDFPvq8t6KORalzly8TBVN6-dj3DKm/view?usp=drive_link)
- <https://tour.giraffe360.com/4af9fd1c409947dca2f904c9e72e>



REDUCED BY £100,000 for a QUICK SALE - Billingham & Co are proud to offer for sale this IMPOSING and most IMPRESSIVE FIVE BEDROOM DETACHED FAMILY HOME offering almost 3000 SQUARE FOOTAGE of living space. Occupying this PRESTIGIOUS PREMIUM SEMI RURAL ADDRESS on the outskirts of the THRIVING VILLAGE, surrounded by open COUNTRYSIDE with idyllic walks close at hand. Kinver offers plenty of LOCAL SCHOOLING, excellent COMMUTER LINKS, Canalside walks and having the historic KINVER EDGE close by. Offering a RARE OPPORTUNITY TO PURCHASE this GRAND HOME, an INTERNAL VIEWING is advised. Located at the end of White Hill, plenty of mature trees offer privacy to the family home. Wrought iron gates open into the impressive sized paved driveway offering plenty of off road parking with access into the double Garage. To the Ground Floor the Entrance porch opens into an impressive sized RECEPTION HALL having feature flooring and stair





Sales 01384 444 004 / Lettings 01384 445 075  
 hello@billingham.properties  
 www.billingham.properties



Agents Note: Whilst every care has been taken to prepare these particulars, they are for guidance purposes only. All measurements are approximate and are for general guidance purposes only and whilst every care has been taken to ensure their accuracy, they should not be relied upon and potential buyers are advised to recheck the measurements.