



Edwin Gee Road | | Kenilworth | CV8 2RJ

£779,995

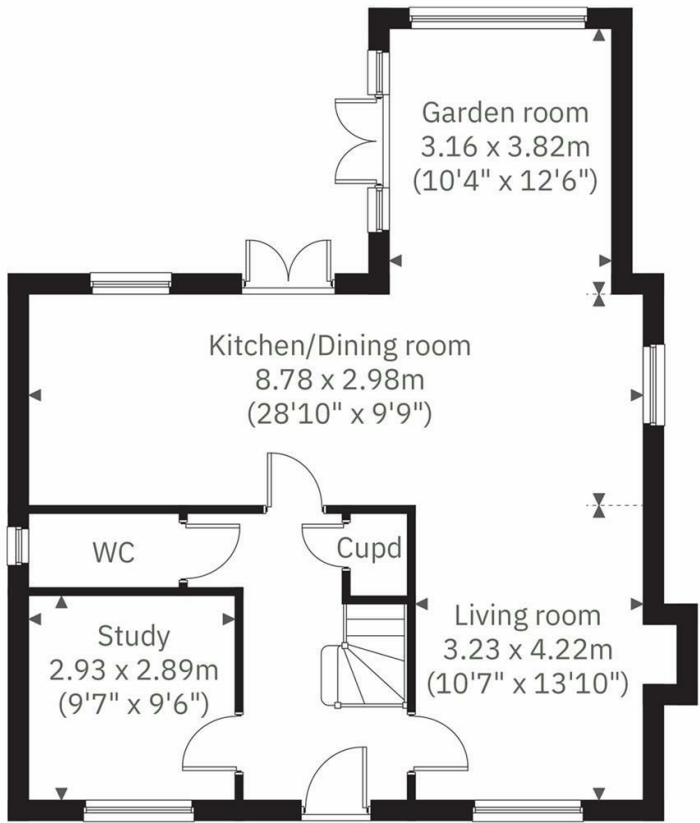
 **KINGSWAY**
ESTATE AGENTS

Edwin Gee Road |
Kenilworth | CV8 2RJ
£779,995

Kingsway Estate Agents are delighted to present to the market this stylish five-bedroom detached residence, located within the prestigious and highly sought-after Kenilworth Gate development.

Upon entering, you are welcomed by a spacious entrance hallway that leads seamlessly to a well-appointed office, a contemporary cloakroom, and a stunning open-plan living, dining, and kitchen area. The dining space is enhanced by elegant French doors opening onto a private rear garden, creating a perfect setting for entertaining and family living.

- Detached
- Five Bedrooms
- Garage
- EPC Rating: B



Energy Efficiency Rating		
	Current	Potential
Very energy efficient - lower running costs		
(92 plus) A		93
(81-91) B	86	
(69-80) C		
(55-68) D		
(39-54) E		
(21-38) F		
(1-20) G		
Not energy efficient - higher running costs		
England & Wales	EU Directive 2002/91/EC	

01926 760024
info@kingswayestateagents.co.uk
kingswayestateagents.co.uk