



Crackley Hill, Coventry Road | Kenilworth | CV8 2FP

Offers over £465,000



KINGSWAY
— ESTATE AGENTS —

Key features

- No Chain
- Two Reception Rooms
- Large Rear Garden
- EPC Rating: D

Description

Kingsway Estate Agents are delighted to present this exceptional four-bedroom semi-detached home, ideally situated on the highly sought-after Crackley Hill in Kenilworth.

Upon entering the property, you are welcomed by a spacious entrance hall featuring stunning original flooring, setting the tone for the character and charm found throughout. From here, you are led into a bright and airy lounge, complete with a beautiful bay window that floods the space with natural light, and a feature fireplace offering a cosy focal point.

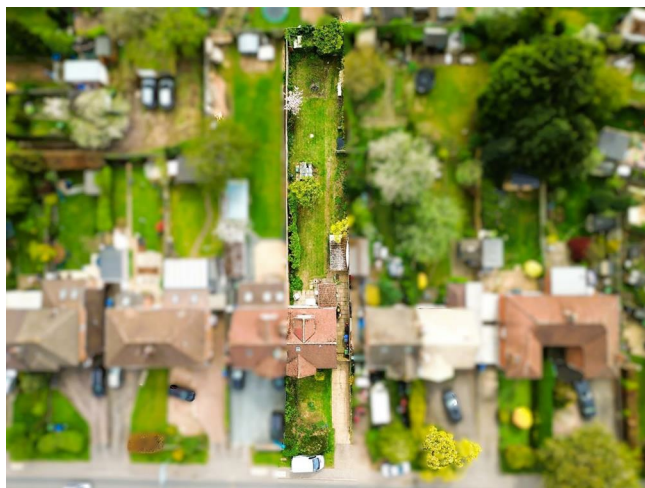
The separate dining room also benefits from a fireplace and enjoys direct access to the generous rear garden through patio doors. The kitchen is sleek and modern in design, with tiled flooring and a convenient side door providing access to the garden and the gated pathway to the front of the property.

Upstairs, the home offers three well-proportioned double bedrooms and a contemporary family bathroom. The property has also been thoughtfully extended into the loft, creating a spacious principal bedroom with the added benefit of a private en-suite.

Externally, the home boasts driveway parking for two vehicles, while the rear of the property features a large, mature garden.

We anticipate this property will be in high demand, therefore it is advisable to book your viewing as soon as possible to avoid disappointment.

EPC Rating: D



Living Room

13'5" x 11'9"

Dining Room

11'5" x 11'10"

Kitchen

16'1" max x 9'2" max

Bedroom One

14'2" max x 16'9" max

Bedroom Two

13'5" x 11'10"

Bedroom Three

11'10" x 11'5"

Bedroom Four

9'2" x 8'3"

Bathroom

7'5" x 8'9"



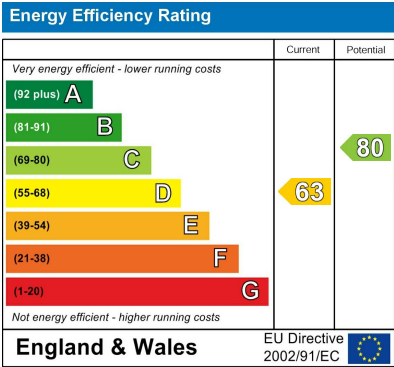




Floor plans



The floor Plan is for illustration purposes only and may not be a representative of the property and is not to scale



01926 760024
info@kingswayestateagents.co.uk
kingswayestateagents.co.uk