



Portland Street | Leamington Spa | CV32 5EY

Guide price £230,000



**KINGSWAY**  
— ESTATE AGENTS —



## Key features

- Prime Location In Leamington Spa Town Centre
- Tenants Already Secured Until Sep 2026 at £1,550pcm
- Two Double Bedrooms
- No Chain
- EPC Rating: D

## Description

Charming Two-Bedroom Apartment in the Heart of Leamington Spa

Kingsway Estate Agents are delighted to present this exceptional opportunity to acquire a well-appointed two-bedroom apartment in the highly sought-after Leamington Spa Town Centre.

This beautifully located property features a spacious living room, a well-equipped kitchen, a modern main bathroom, and two generous double bedrooms.

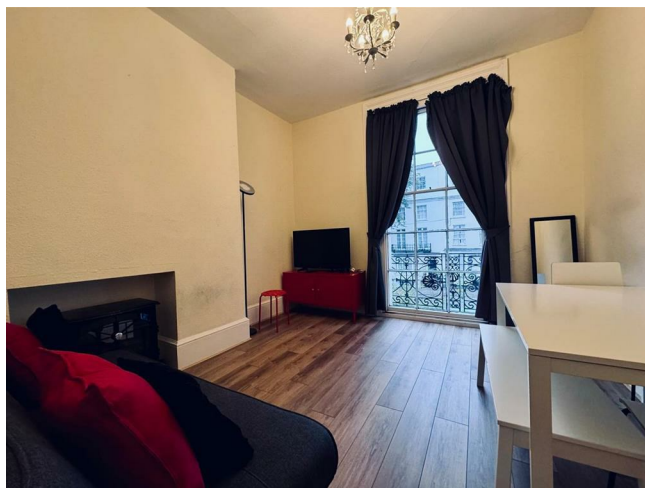
Nestled on the picturesque, tree-lined Portland Street, this apartment benefits from the charm of impressive Georgian architecture while being just moments from the vibrant town centre. With the train station just a short 10-minute walk away and easy motorway access, this property is Leamington Spa offers a wealth of shops, cultural attractions, and a strong community atmosphere. ideal for commuters. Additionally, the area boasts excellent private and state schools, making it a fantastic choice for families.

There are currently tenants in the apartment until Sept 2025 with a rental income of £1,250. Tenants have been secured from Sept 2025 to Sept 2026 with a rental income of £1,550.

The property has 959 years left on the lease, with £110 PCM Service Charge and no ground rent.

This is a must-see property, and early viewing is highly recommended to avoid disappointment!

EPC Rating: D





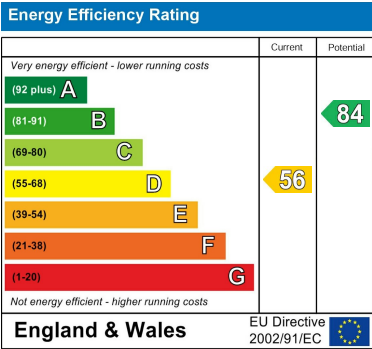
Floor plans



Total Floor Area Approx. 42 sq. metres  
(452.14 sq. feet)



The floor Plan is for illustration purposes only  
and may not be a representative of the  
property and is not to scale



KINGSWAY  
ESTATE AGENTS

01926 760024

info@kingswayestateagents.co.uk

kingswayestateagents.co.uk