



Warwick New Road | | Leamington Spa | CV32 5JF

£1,450 Per month



KINGSWAY
ESTATE AGENTS

Key features

- Three Double Bedrooms
- Character Features Throughout
- Town Centre Location
- EPC Rating: C

Description

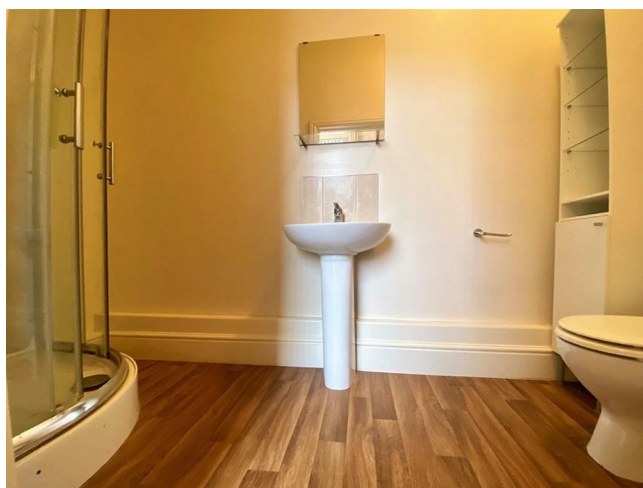
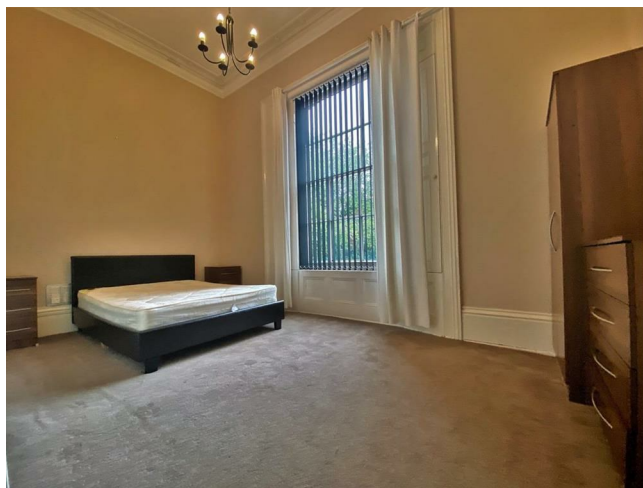
A unique and spacious ground floor apartment located just a few minutes walk to Leamington Spa town centre. The property comprises three double bedrooms of which the master benefits from an en-suite, fully fitted kitchen, separate lounge, large dining room/third bedroom, and an additional shower room.

This beautiful apartment benefits from having gas central heating and off-road parking to the front and rear of the property.


The property also comes with Free Wi-Fi, however, new tenants can install their own should they wish.

EPC Rating: C

Directions





Energy Efficiency Rating		
	Current	Potential
<i>Very energy efficient - lower running costs</i>		
(92 plus) A		
(81-91) B		
(69-80) C		
(55-68) D		
(39-54) E		
(21-38) F		
(1-20) G		
<i>Not energy efficient - higher running costs</i>		
England & Wales	EU Directive 2002/91/EC	



KINGSWAY
ESTATE AGENTS

01926 760024

info@kingswayestateagents.co.uk

kingswayestateagents.co.uk