



Anzac Close, Peacehaven

Offers in the region of £375,000 - £400,000



Property highlights

- Charming detached bungalow in Peacehaven
- Close to local shops and the South Downs National Park
- Well-presented accommodation with neutral decor
- Two/three double bedrooms
- Good-sized bathroom with a bath and a separate shower
- Spacious living room with sliding doors to the front garden
- Well-proportioned kitchen with ample cupboard space
- Established rear garden with a patio, a lawn, and a pond
- Private driveway
- Garage with access to the rear garden



Located on a quiet close in Peacehaven, within close proximity to the rolling hills of the South Downs National Park, is this charming two/three bedroom bungalow. Set back from the road, it benefits from a front and a rear garden, as well as a driveway for off-street parking.

The Property

Located on a quiet close in Peacehaven, within close proximity to the rolling hills of the South Downs National Park, is this charming two/three bedroom bungalow (depending on how you use the space). Set back from the road, it benefits from a front and a rear garden, as well as a driveway for off-street parking.

You enter into a porch where the front door leads to a bright and spacious hallway. At the back of the house, overlooking the garden, are two spacious and welcoming bedrooms. The principal has sliding doors that open out to the patio. The second bedroom has a large window with a lush green outlook and ample space for a double wardrobe and a chest of drawers.

There is a well-presented bathroom decorated with beige wall tiles and vinyl flooring. It has a bath, a separate corner shower, a WC, and a wash basin. Next to the bathroom is an additional WC.

Sitting in the middle of the property, the kitchen is well-proportioned with wooden cupboards hugging the walls and a sleek black worktop. Appliances tuck neatly under the worktops and there's a freestanding gas cooker.

At the front of the property is a dining room, which could be a third bedroom or a home office. Adjacent to this is the dual-aspect living room, which has a beautiful outlook and sliding doors to the mature front garden. There's an electric fireplace and plenty of space for sofas and furniture.

The garden at the rear of this property, accessible from the kitchen, offers patio space to dine al-fresco and a lawn for summer days relaxing in the sun. There are easy-to-maintain mature beds, a small fish pond, a shed, a greenhouse, and access to the garage.

An airing cupboard and an additional storage cupboard are in the hallway. Further storage space can be found in the loft, which is accessible via a ladder.

This property is Freehold, and the council tax band is D.

The Area

Peacehaven is located along the picturesque southern coast, just six miles east of Brighton. The town is renowned for its peaceful ambiance, extensive green spaces, and the scenic South Coast Road, which provides breathtaking vistas of the English Channel.

Peacehaven's history dates back to the early 20th century when it was founded by entrepreneur Charles Neville in 1916 as a seaside resort. His vision was to create a planned community, offering residents a peaceful haven away from city life, hence the name "Peacehaven."

Today, Peacehaven retains much of its original charm while offering modern amenities. The town boasts a range of recreational facilities, including the Meridian Centre, which serves as a hub for shopping and community activities. Outdoor enthusiasts can enjoy the South Downs National Park, which lies just north of the town, providing ample opportunities for hiking and nature walks. Peacehaven is also home to the iconic Meridian Monument, marking the Greenwich Meridian's crossing point.

With its rich history, scenic beauty, and welcoming community, Peacehaven continues to be a desirable location for both residents and visitors alike.

Schools

Local primary schools

- Meridian Community Primary School (0.2 miles, 5 minutes on foot)
- Peacehaven Heights Primary School (1.4 miles, 20 minutes on foot)

Local secondary schools and sixth forms

- Peacehaven Community School (1.1 miles, 20 minutes on foot)
- Longhill High School (4.8 miles, 16 minutes by car)
- Varndean College (12.3 miles, 30 minutes by car)
- BHASVIC College (9.7 miles, 31 minutes by car)



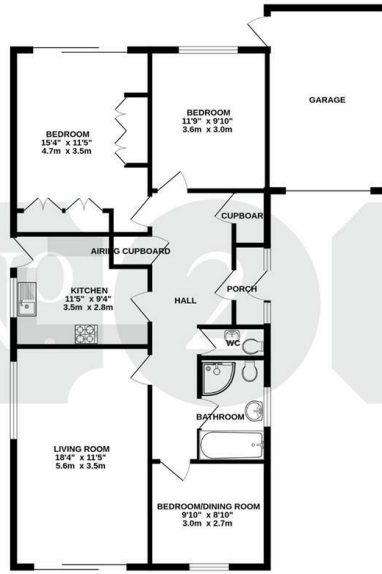








GROUND FLOOR



Whilst every attempt has been made to ensure the accuracy of the floorplan contained herein, responsibility of errors, omissions, errors and any other errors are disclaimed and no responsibility is taken for any errors, omissions or inaccuracies. This plan is for illustrative purposes only and should not be used for any prospective purchase. The services, systems and appliances shown have not been tested and no guarantee is given for any services, systems or appliances shown.