



Cromer Street, King's Cross, WC1H

3 bedroom building - £1,300,000 F/hld

NH - Central & Investments Sales

# Cromer Stree, King's Cross, WC1H

£1,300,000 F/hld 3 bedroom building

Foxtons.co.uk/15271040

Freehold for sale in great location of Kings Cross, consisting of Three self contained, one bedroom apartments only a few short minutes from Kings X St Pancras & Euston stations.

All three apartments are managed by Foxtons and generating consistent income making it a great opportunity for investors. Total Rent per annum - £78,900. The ground floor commerical is operated as an office and sold on a long lease.

## KEY FEATURES

- Highly desirable London freehold in an amazing central London location
- Three self contained, one bedroom, apartments
- Income generating
- Perfect for short term lets
- Moments from Kings Cross St Pancras and Euston Stations
- Only a short journey from Central London

## LOCAL AREA

Cromer Street is a desirable locale only a few minutes from Kings X St Pancras & Euston stations providing unbeatable local, national and international rail travel. Central London is only a short journey away.

### London King's Cross Rail Station

London North Eastern Railway Great Northern Thameslink Grand Central First Hull Trains line:

### King's Cross St. Pancras Underground Station

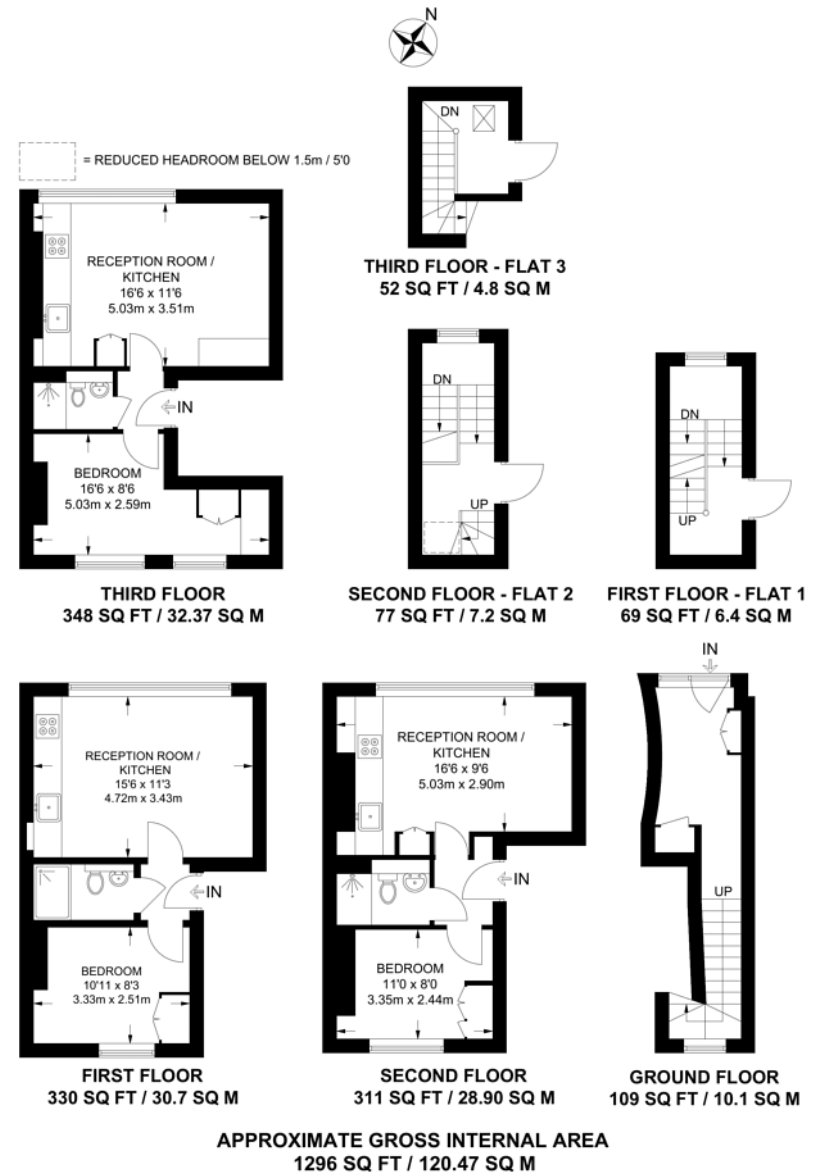
Piccadilly Metropolitan Hammersmith & City Circle Victoria Northern lines, Zone 1

Representation of current layout, gross internal floor area is approximately 1,296 Sq Ft (120.40 Sq M)

## Foxtons NH - Central & Investments

Building One Chiswick Park  
London W4 5BE

RDI@foxtons.co.uk  
020 7973 2020





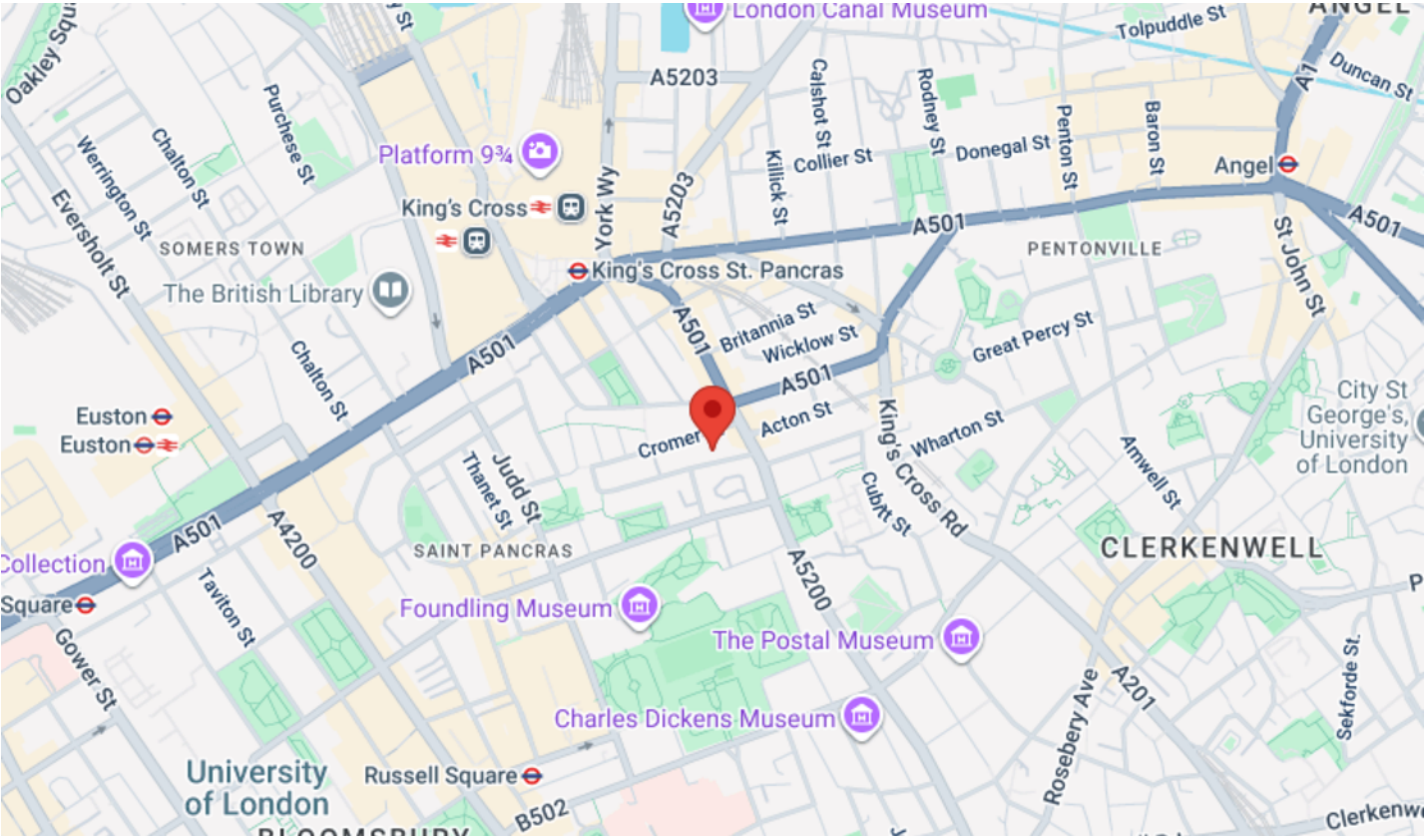


# Cromer Stree, King's Cross, WC1H

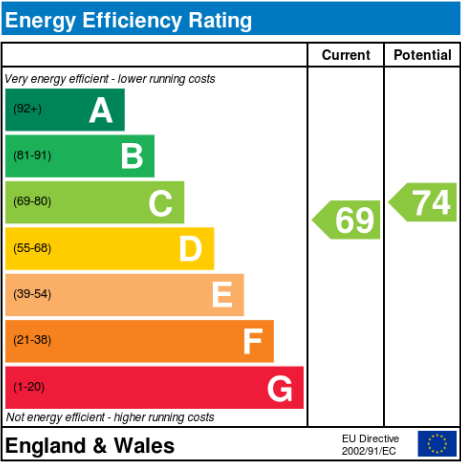
£1,300,000 F/hld 3 bedroom building

Foxtons.co.uk/15271040

Foxtons.co.uk



Tenure **Freehold**  
Local Authority **To be confirmed**  
Council Tax **To be confirmed**



We have prepared these property particulars as a general guide to a broad description of the property. They are not intended to constitute part of an offer or contract. We have not carried out a structural survey and the services, appliances and specific fittings have not been tested. All photographs, measurements, floorplans and distances referred to are given as a guide only and should not be relied upon for the purchase of carpets or any other fixtures or fittings. Lease details, service charges and ground rent (where applicable) and council tax are given as a guide only and should be checked and confirmed by your Solicitor prior to exchange of contracts. The copyright of all details, photographs and floorplans remain exclusive to Foxtons. (1.71.145986)



www.tpos.co.uk