



2 Floors



3 Bedrooms



1 En suite

## HENLEY THREE BEDROOM HOME

A three bedroom detached home comprising a generous lounge and impressive open plan kitchen / dining area with separate utility and French doors leading to the garden. Upstairs boasts three generously sized bedrooms, with the master bedroom benefitting from a dressing area and en suite shower room.

# HENLEY THREE BEDROOM HOME

## ◇ DIMENSIONS

### First Floor:

#### Bedroom 1

2.91m x 2.94m  
9'7" x 9'8"

#### Dressing Area

#### En Suite

#### Bedroom 2

3.11m x 2.44m  
10'2" x 8'0"

#### Bedroom 3

2.28m x 2.85m  
7'6" x 9'4"

#### Bathroom

### Ground Floor:

#### Lounge

3.26m x 4.74m  
10'8" x 15'7"

#### Kitchen / Dining

4.33m x 2.95m  
14'2" x 9'8"

#### Utility

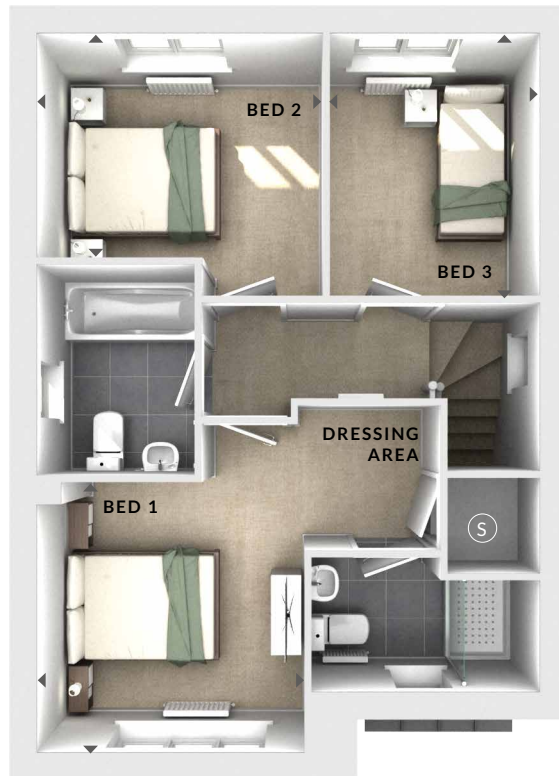
1.06m x 1.70m  
3'6" x 5'7"

(S) Storage

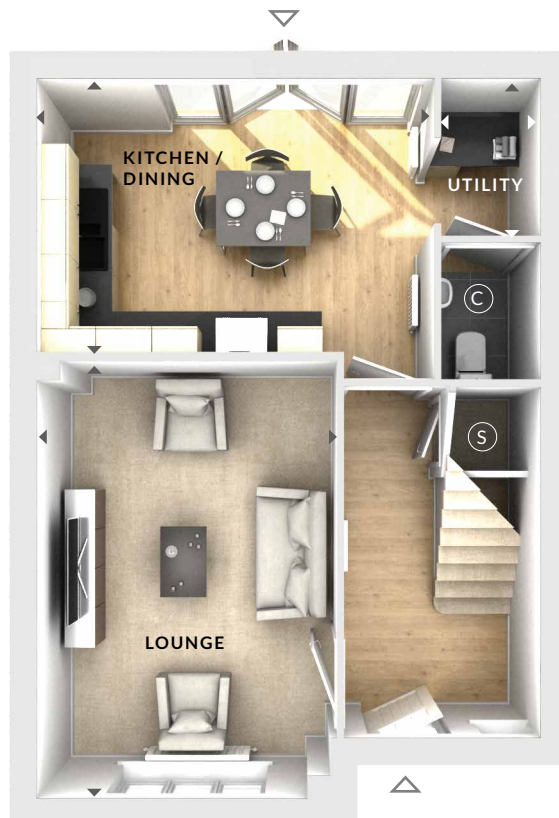
(C) Cloaks

◀ ▶ Measurement Points

△ External Access



First Floor



Ground Floor

© Bloor Homes 385 B Ashby

These particulars are intended as a preliminary guide for prospective purchasers and should not be relied upon. The elevational treatment for individual house types shows a typical arrangement. Details of materials and design treatments may vary. Any artist impressions shown are not intended to represent any particular plot. Purchasers are advised to inspect the layout plan to establish the arrangement of the house and surrounding property. Internal layouts show a general arrangement which may vary from plot to plot. Room sizes given are approx. overall finished room sizes and subject to normal building tolerances (ie ± 75mm). In all instances purchasers are advised to inspect plot specific information available from our sales team. Nothing in these particulars or verbal assurance shall form or constitute part of any contract, and are given without any responsibility on behalf of Bloor Homes.

**BLOOR HOMES**