

FREEHOLD



Bungalow - Semi Detached

69 TREVOR DRIVE, MAIDSTONE, ME16 0QN

Offers in the region of

£330,000

FEATURES

- Probate Granted
- Freehold
- Garden
- Chain Free
- Bungalow
- Single Garage and Driveway



THE
**ESTATES
AGENT**
PROPERTY SALES & MANAGEMENT

2 Bedroom Bungalow - Semi Detached located in Maidstone

Call us on

020 3859 5311

info@theestatesagent.co.uk

Welcome to Trevor Drive, Maidstone, - where opportunity meets comfort. This delightful semi-detached bungalow is ready and waiting for someone to infuse it with their personal touch, offering a canvas for your dreams to unfold.

Key Features:

- 2 bedrooms, ideal for a small family or those seeking a cosy space
- Spacious garden with a single garage at the rear, perfect for green thumbs or relaxing weekends
- Probate granted, ensuring a smooth and hassle-free process
- Chain-free, providing flexibility and ease of purchase
- Freehold, giving you full ownership and peace of mind

Interior Highlights:

Step inside to discover a world of potential. The open-plan layout creates a sense of space, with natural light dancing through the windows. The living area is inviting, offering a warm ambiance for

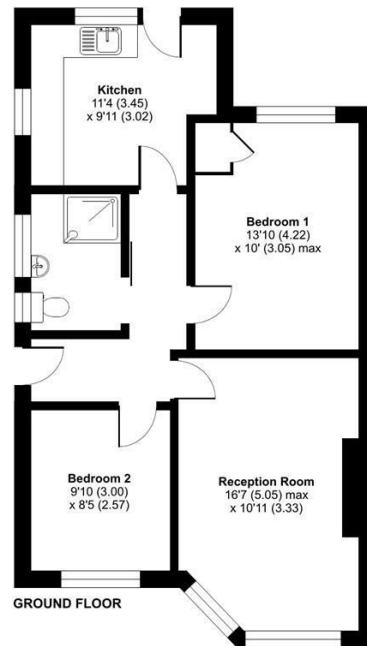
Council Tax Band

D

Trevor Drive, Maidstone, ME16

Approximate Area = 646 sq ft / 60 sq m

For identification only - Not to scale



Energy Efficiency Rating		Current	Potential
<i>Very energy efficient - lower running costs</i>			
(92 plus) A			89
(81-91) B			
(69-80) C		73	
(55-68) D			
(39-54) E			
(21-38) F			
(1-20) G			
<i>Not energy efficient - higher running costs</i>			
England & Wales		EU Directive 2002/91/EC	

Agents Note: Whilst every care has been taken to prepare these particulars, they are for guidance purposes only. All measurements are approximate and are for general guidance purposes only and whilst every care has been taken to ensure their accuracy, they should not be relied upon and potential buyers are advised to recheck the measurements.



Floor plan produced in accordance with RICS Property Measurement Standards incorporating International Property Measurement Standards (IPMS2 Residential). © richrecom 2024. Produced for: Flanders International Estate Agents, REF: 1094275

THE
**ESTATES
AGENT**
PROPERTY SALES & MANAGEMENT