

FREEHOLD



House

80 RECTORY CLOSE, YATE, BS37 5SE

Offers in excess of

£260,000

FEATURES

- Freehold
- Central heating
- Probate Granted
- Private garden
- Double glazing
- No Chain



THE
**ESTATES
AGENT**
PROPERTY SALES & MANAGEMENT

3 Bedroom House located in Yate

Call us on

020 3859 5311

info@theestatesagent.co.uk

Nestled in the heart of Bristol, this charming 3-bedroom house presents a delightful living experience. Characterised by a bay window in the living room, three decent-sized bedrooms, and a garden, this property offers a perfect combination of style and comfort with a great opportunity to modernise.

Located in Bristol, this 3-bedroom house offers great potential for a renovation project.

Contact us today to arrange a viewing and experience the unique features and comfort this property has to offer.

Please note: The images provided are for illustrative purposes only and represent the property's potential, offering a glimpse into its character and charm.

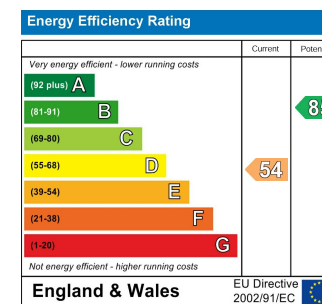
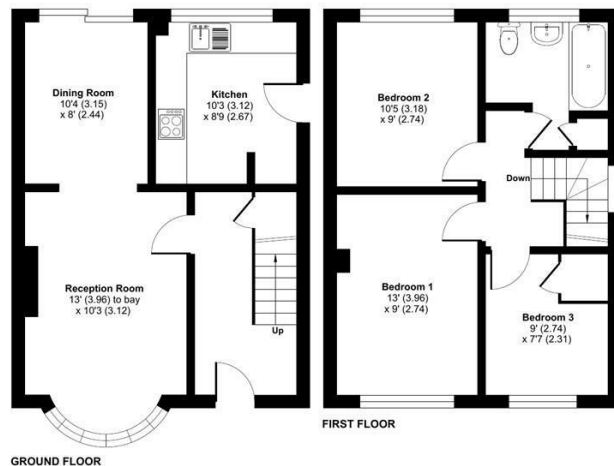
Council Tax Band

C

Rectory Close, Yate, Bristol, BS37

Approximate Area = 839 sq ft / 77.9 sq m

For identification only - Not to scale



Agents Note: Whilst every care has been taken to prepare these particulars, they are for guidance purposes only. All measurements are approximate and are for general guidance purposes only and whilst every care has been taken to ensure their accuracy, they should not be relied upon and potential buyers are advised to recheck the measurements.



Floor plan produced in accordance with RICS Property Measurement Standards incorporating International Property Measurement Standards (IPMS2 Residential). © richreom 2023. Produced for: Frasers International Estate Agents, REF: 1033610