

FREEHOLD



House - Semi-Detached

67 EASTHILL DRIVE,  
PORTSLADE, BN41  
2FE

£375,000

FEATURES

- Probate granted
- Garden
- Semi-Detached
- Freehold
- 3 Bedrooms
- Renovation



THE  
**ESTATES  
AGENT**  
PROPERTY SALES & MANAGEMENT

# 3 Bedroom House - Semi-Detached located in Portslade

Call us on

020 3859 5311

[info@theestatesagent.co.uk](mailto:info@theestatesagent.co.uk)

Welcome to an exciting renovation opportunity! This spacious 3-bedroom semi-detached house in Portslade boasts two living rooms, front and back gardens, and is in need of modernisation. Perfectly suited for those with a vision for transformation, this property presents a blank canvas to create a contemporary and comfortable family home.

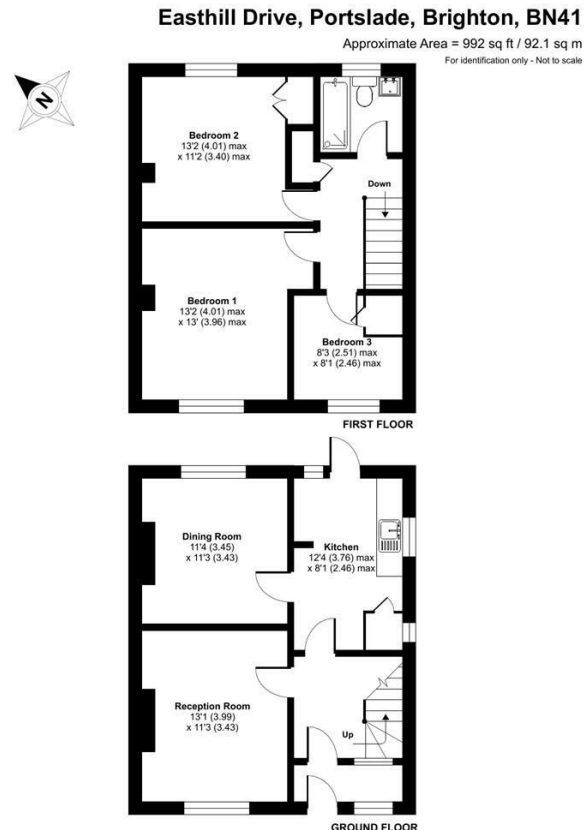
## Key Features:

**Location:**  
Nestled in the vibrant community of Portslade, this semi-detached house enjoys a convenient location with easy access to local amenities, schools, parks, and transport links. Embrace the laid-back lifestyle of this seaside town while remaining close to the hustle and bustle of nearby Brighton.

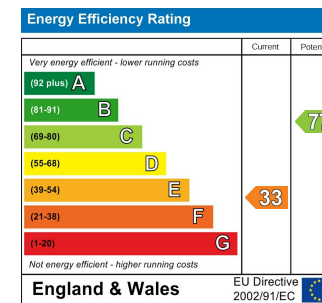
**Spacious Living Areas:**  
This property features not one, but two living rooms, offering ample space for relaxation, entertainment, and family gatherings.

Council Tax Band

C



Floor plan produced in accordance with RICS Property Measurement Standards incorporating International Property Measurement Standards (IPMS2 Residential). © richreom 2024. Produced for: Frederic International Estate Agents - REF: 1087106



Agents Note: Whilst every care has been taken to prepare these particulars, they are for guidance purposes only. All measurements are approximate and are for general guidance purposes only and whilst every care has been taken to ensure their accuracy, they should not be relied upon and potential buyers are advised to recheck the measurements.