

2

DURHAM HOUSE
DURHAM PLACE

C H E L S E A S W 3

GRANDEUR AND GREENERY



Durham House hosts impressive 3.77m ceilings and tall sash windows that flood the exquisite living spaces with natural light. Perfectly positioned to overlook the stunning green space of Burton Court, this residence combines historic charm with modern luxury, including a 24-hour live-in caretaker and exclusive off-street parking.

Ideally located next to Sloane Square Underground Station, enjoy access to world-class shopping, dining, and cultural attractions in the heart of Chelsea.





- Reception room
- Dining room
- Spacious entrance hallway
- Kitchen
- Principal bedroom with ensuite bathroom and mezzanine dressing room
- Second bedroom with ensuite bathroom
- Off-street parking
- Communal garden
- Resident caretaker





THE LOCATION

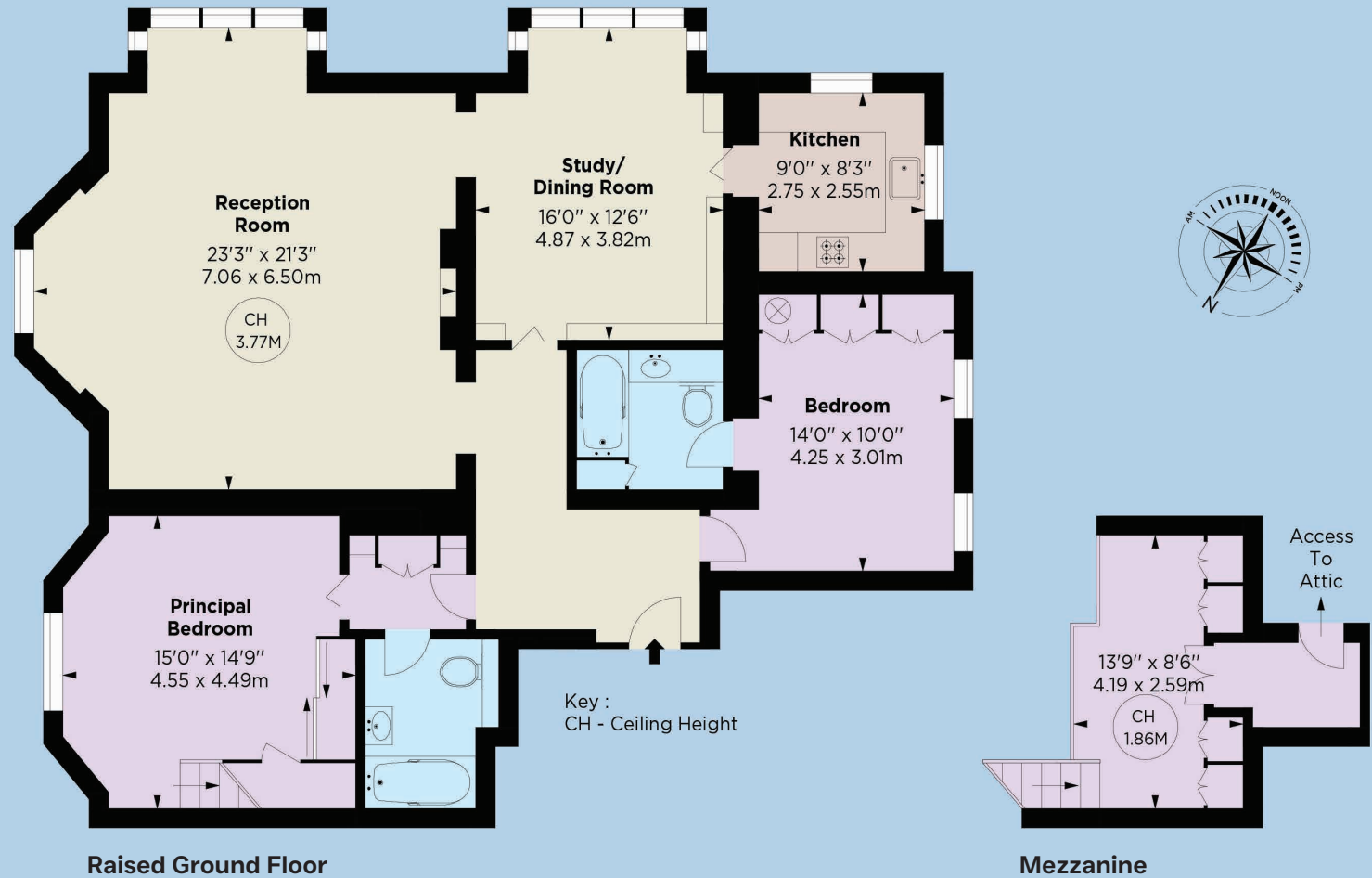


Walking distances

Sloane Square 10 minutes

2 DURHAM HOUSE, 2 DURHAM PLACE SW3 4ET

Approximate Gross Internal Area
1,534 sq ft / 142.51 sq m



TERMS

TENURE
981 years plus Share of Freehold

LOCAL AUTHORITY

Royal Borough of Kensington
and Chelsea

© Alex Winship Photography Ltd.

This plan is for layout guidance only. Not drawn to scale unless stated. Windows and door openings are approximate. Whilst every care is taken in the preparation of this plan, please check all dimensions, shapes and compass bearings before making any decisions reliant upon them.

FORTIS ADVISORS

Tim Macpherson
07974 201367
tim@fortisadvisors.co

Charles Davis
07525 175274
charles@fortisadvisors.co

7 New Quebec Street
London
W1H 7RH
Tel: 0203 3938133