

23

LANCASTER
ROAD

N O T T I N G H I L L



VIBRANT NOTTING HILL

A Victorian end of terrace house in the heart of Notting Hill. Arranged over four floors, providing superb living space over the lower ground and raised ground floors, the house benefits from an abundance of natural light and sense of volume gained from ceiling heights in excess of three metres on the principal floors. The house features a panoramic roof terrace with jacuzzi. Superbly located between Portobello and St. Luke's Road and moments away from the exceptional restaurants and boutiques on Westbourne Grove.





- 4 Reception rooms
- Utility room
- 4 Bedrooms
- 2 Bathrooms
- Shower room
- Cloakroom
- Sauna
- Garden
- Terrace
- Roof terrace with jacuzzi



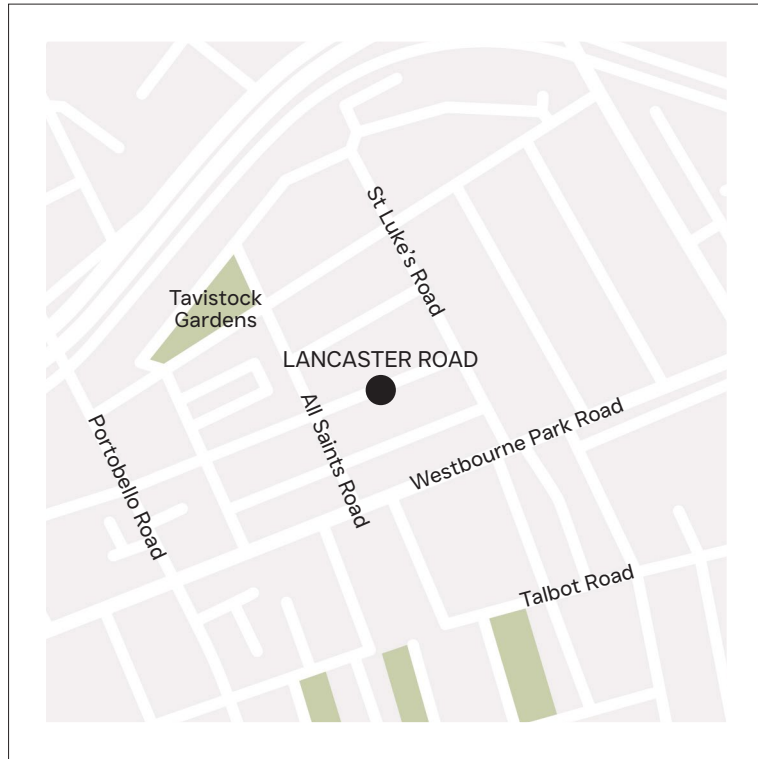








THE LOCATION

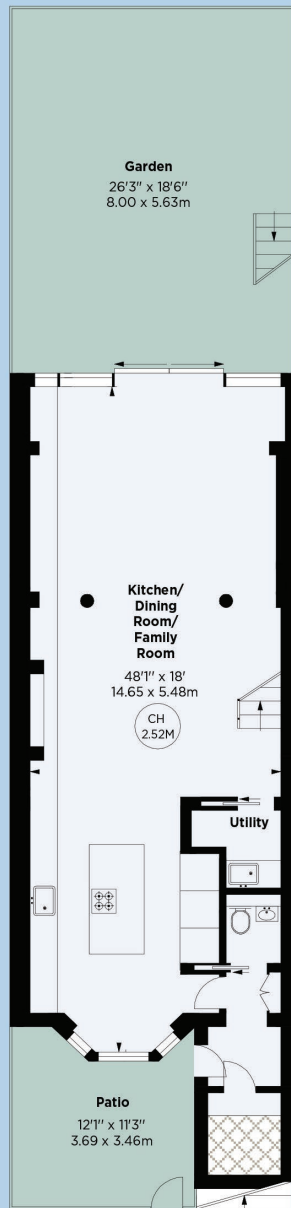


23 LANCASTER ROAD W11 1QL

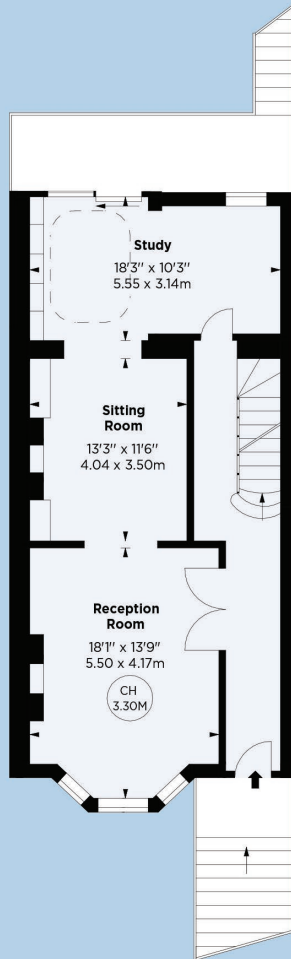
Approximate size: 3045 sq Ft/282.88 sq metres

TENURE: Freehold

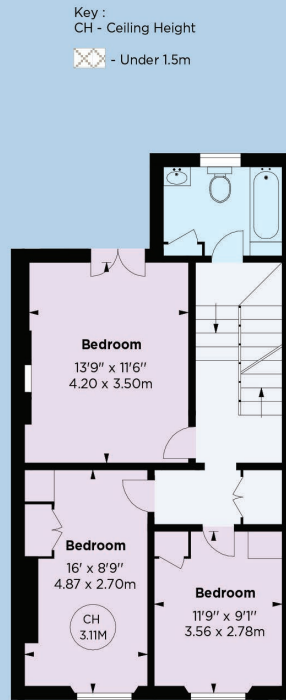
LOCAL AUTHORITY: Royal Borough of Kensington and Chelsea



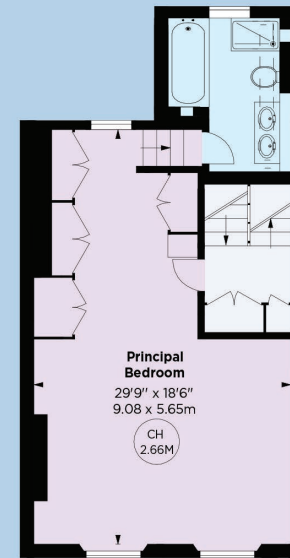
Lower ground floor



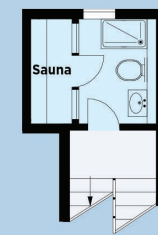
Raised ground floor



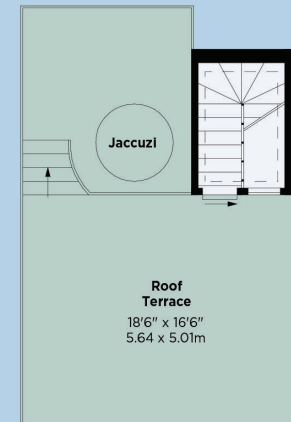
First floor



Second floor



First floor half landing



Third floor

Key:
CH - Ceiling Height
Under 1.5m



This plan is for layout guidance only. Not drawn to scale unless stated. Windows and door openings are approximate. Whilst every care is taken in the preparation of this plan, please check all dimensions, shapes and compass bearings before making any decisions reliant upon them.

FORTIS ADVISORS

Tim Macpherson
07974 201367
tim@fortisadvisors.co

Charles Davis
07525 175274
charles@fortisadvisors.co

7 New Quebec Street
London
W1H 7RH
Tel: 0203 3938133