



Thomas Chapman Grove

Southbridge, Northampton

oriordanbond
SALES & LETTINGS



Thomas Chapman Grove

Southbridge

NN4 8RQ

PRICE £299,995

This modern three bedroom end terraced family home with off road parking and single garage is offered for sale in the very popular area of Southbridge. The property provides good access to Becketts Park as well as Northampton town centre.

The accommodation comprises entrance hall with stairs to first floor, sitting room with feature gas fire and surround, dining room with French doors to garden and a fitted kitchen with appliances. To the first floor are three bedrooms and a family bathroom. Outside is low maintenance frontage and off road parking leading to a single garage. To the rear is a lovely garden with decking area and the remainder laid to lawn with flower and shrub borders. Further benefits include uPVC double glazing and gas radiator heating. (B/710/M)

Additional information

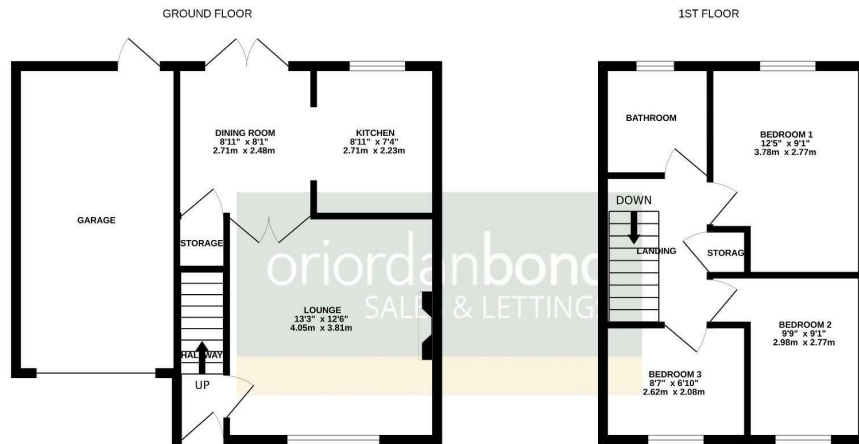
- Council Tax Band: C
- Energy Efficiency Rating: D

Viewing

Viewing strictly by appointment – details below

Disclaimer

O’Riordan Bond Estate Agents Limited has not tested apparatus, equipment, fittings or services and so cannot verify they are in working order. The buyer is advised to obtain verification from their solicitor or surveyor.



TOTAL FLOOR AREA: 710sq. ft. (66.0 sq.m.) approx.
 Whilst every attempt has been made to ensure the accuracy of the floorplan contained here, measurements of doors, windows, rooms and any other items are approximate and no responsibility is taken for any error, omission or mis-statement. This plan is for illustrative purposes only and should be used as such by any prospective purchaser. The services, systems and appliances shown have not been tested and no guarantee as to their operability or efficiency can be given.
 Made with Metropix c32024

O’Riordan Bond Far Cotton Sales
 01604 706007

farcotton@oriordanbond.co.uk

