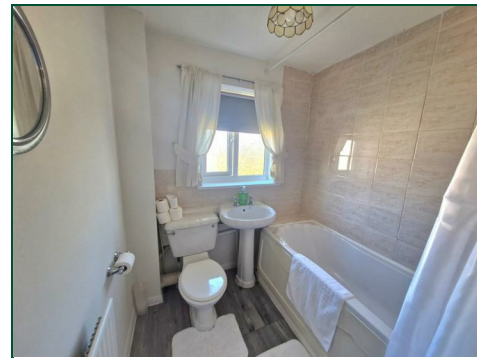
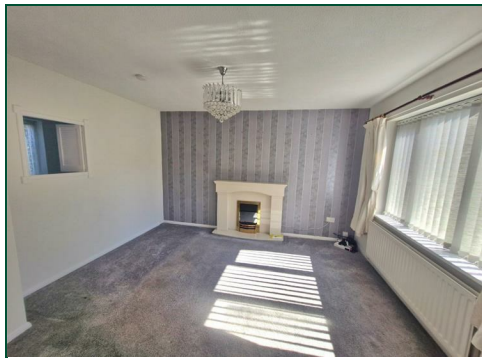




Floribunda Drive
Roselands, Northampton

oriordanbond
SALES & LETTINGS



Floribunda Drive

Roselands

NN4 8TY

PRICE £269,995

This three bedroom semi-detached home is offered for sale with no onward chain in the very popular location of Roselands, part of NN4. The property provides good access to local schools, amenities and Sixfields Leisure Park.

The accommodation comprises entrance hall with stairs to first floor, sitting room, separate dining room and fitted kitchen. To the first floor are three bedrooms and a family bathroom. Outside, to the front is a lawn with steps descending to the front door and off road parking for four cars leading to a single garage. The rear garden is enclosed by timber fencing with a patio area and the remainder laid to lawn with flower, tree and shrub borders. Further benefits include gas radiator heating and uPVC double glazing. (B/711/M)

Additional information

- Council Tax Band: B
- Energy Efficiency Rating: D

Viewing

Viewing strictly by appointment – details below

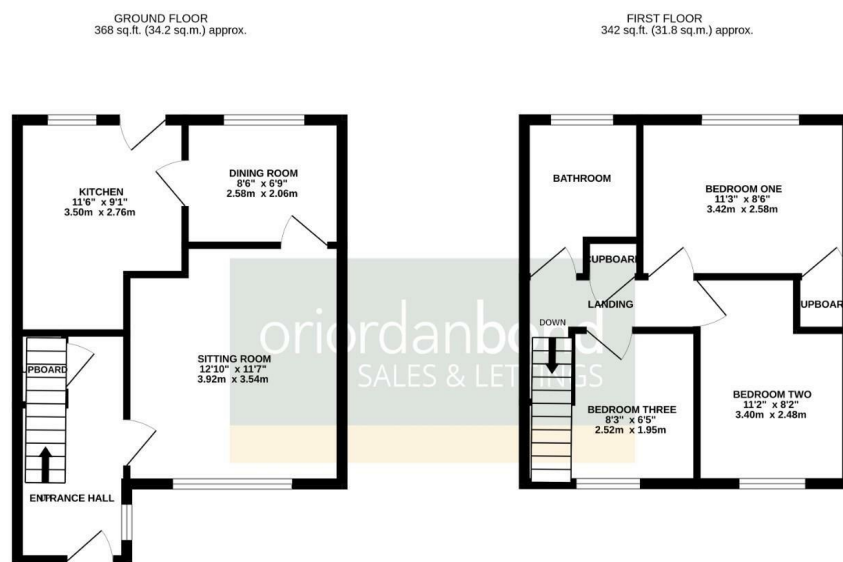
Disclaimer

O'Riordan Bond Estate Agents Limited has not tested apparatus, equipment, fittings or services and so cannot verify they are in working order. The buyer is advised to obtain verification from their solicitor or surveyor.

O'Riordan Bond Far Cotton Sales

01604 706007

farcotton@oriordanbond.co.uk



TOTAL FLOOR AREA : 711 sq.ft. (66.0 sq.m.) approx.
Whilst every attempt has been made to ensure the accuracy of the floorplan contained here, measurements of doors, windows, rooms and any other items are approximate and no responsibility is taken for any error, omission or mis-statement. This plan is for illustrative purposes only and should be used as such by any prospective purchaser. The services, systems and appliances shown have not been tested and no guarantee as to their operability or efficiency can be given.
Made with Metreplan C0205

