



Blisworth Close

Tunnel Hill Farm, Northampton

oriordanbond
SALES & LETTINGS



Blisworth Close

Tunnel Hill Farm
NN4 8QT

PRICE £250,000

A modern three bedroom terraced property, situated in a cul-de-sac, within very popular Blisworth Close and offered for sale with no upper chain. The property provides good access to many local schools.

The accommodation comprises entrance hall with stairs to first floor, modern fitted kitchen with built-in oven, hob and extractor over, sitting/dining room with French doors to rear garden and cloakroom/WC. On the first floor are three bedrooms and a family bathroom with en-suite to the master bedroom. Outside, the rear garden has a patio area to the immediate rear with steps descending to a further lawned area, gated rear access and enclosed by timber fence to all sides. Further benefits include allocated parking, gas central heating and uPVC double glazing. (C/860/M)

Additional information

- Council Tax Band: C
- Energy Efficiency Rating: C

Viewing

Viewing strictly by appointment – details below

Disclaimer

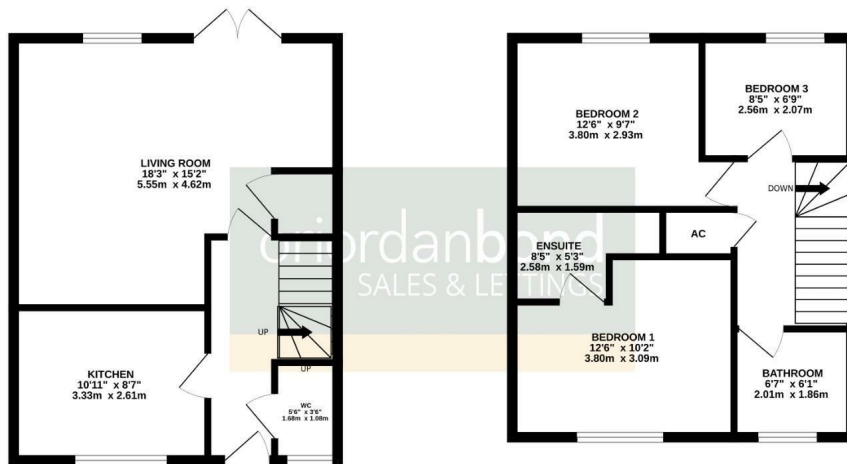
O'Riordan Bond Estate Agents Limited has not tested apparatus, equipment, fittings or services and so cannot verify they are in working order. The buyer is advised to obtain verification from their solicitor or surveyor.

O'Riordan Bond Far Cotton Sales
01604 706007

farcotton@oriordanbond.co.uk

GROUND FLOOR
432 sq.ft. (40.1 sq.m.) approx.

FIRST FLOOR
428 sq.ft. (39.7 sq.m.) approx.



TOTAL FLOOR AREA - 860 sq.ft. (79.9 sq.m.) approx.

Whilst every attempt has been made to ensure the accuracy of the floorplan contained here, measurements of doors, windows, rooms and any other items are approximate and no responsibility is taken for any error, omission or mis-statement. This plan is for illustrative purposes only and should be used as such by any prospective purchaser. The services, systems and appliances shown have not been tested and no guarantee as to their operability or efficiency can be given.
Made with Metropix c2024

