



14 Redruth Close

Delapre, Northampton

oriordanbond
SALES & LETTINGS



14 Redruth Close

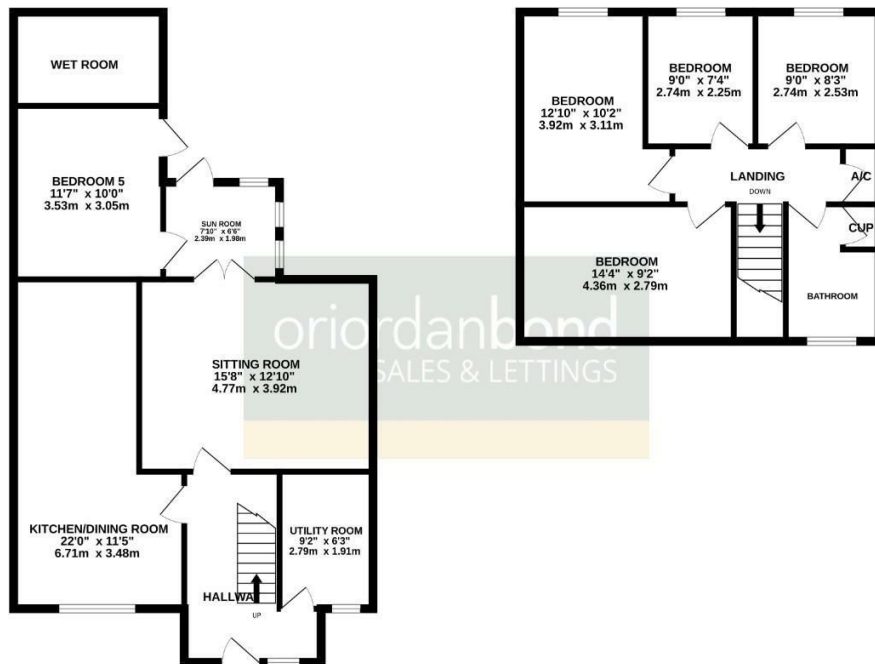
Delapre

NN4 8PL

PRICE £265,000

GROUND FLOOR

1ST FLOOR



TOTAL FLOOR AREA - 1304 sq.ft. (121.1 sq.m.) approx.

Whilst every attempt has been made to ensure the accuracy of the floorplan contained here, measurements of doors, windows, floors and any other items are approximate and no responsibility is taken for any error, omission or mis-statement. This plan is for illustrative purposes only and should be used as such by any prospective purchaser. The services, systems and appliances shown have not been tested and no guarantee as to their operability or efficiency can be given.
Made with MyPlan. 02024

An extended five bedroom family home situated in the popular area of Delapre. The property is located conveniently for local shops and amenities and is also within walking distance of the historic and beautiful Delapre Abbey. Northampton town centre is a short bus/car journey away with great road links available.

The accommodation comprises entrance hall, utility room, large kitchen/dining room, spacious sitting room leading through to a sun room, a double bedroom and en-suite wet room. To the first floor are four bedrooms and a family bathroom. Outside to the front is a small lawned area with path to the front door. The rear garden is low maintenance with artificial grass and a patio area with secure gated access to the rear. Further benefits include uPVC double glazing, gas radiator heating and wheelchair friendly to the entire ground floor. (B/1304/M)

Additional information

- Council Tax Band: B
- Energy Efficiency Rating: C

Viewing

Viewing strictly by appointment – details below

Disclaimer

O'Riordan Bond Estate Agents Limited has not tested apparatus, equipment, fittings or services and so cannot verify they are in working order. The buyer is advised to obtain verification from their solicitor or surveyor.

O'Riordan Bond Far Cotton Sales
01604 706007

farcotton@oriordanbond.co.uk

