



Harvester Way

Buckingham Fields, Northampton

oriordanbond
SALES & LETTINGS



Harvester Way

Buckingham Fields
NN4 8JZ

OFFERS OVER £375,000

A modern four bedroom detached property located within a popular new development, just off the Towcester Road, close to Hunsbury Shopping Centre and the highly regarded Wootton Park School. Offered with no onward chain.

Accommodation includes entrance hall, cloakroom/WC, study and sitting room opening into a kitchen/dining room with high gloss fitted kitchen. The first floor landing leads to the master bedroom with en-suite, three further well proportioned bedrooms and the family bathroom. Outside is an enclosed rear garden and lawned frontage with large driveway to side providing off road parking leading to a single garage. The property benefits from gas radiator heating and uPVC double glazing. (A/1271/M)

Additional information

- Council Tax Band: E
- Energy Efficiency Rating: B

Viewing

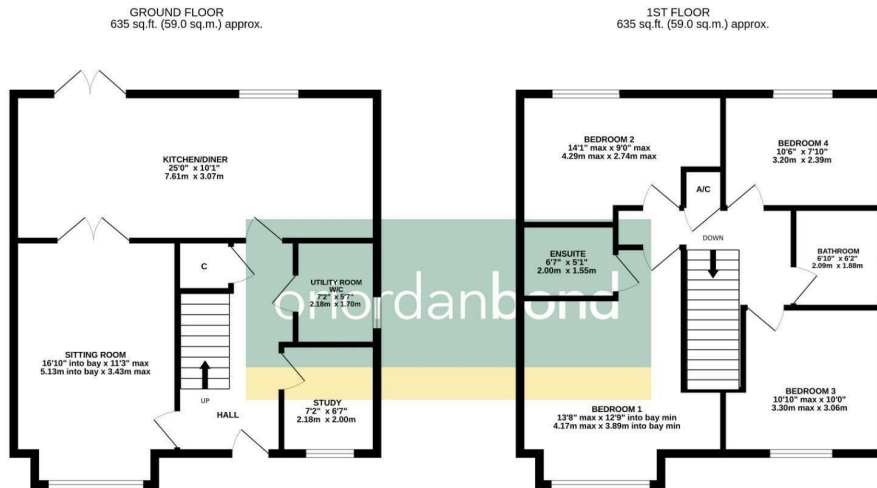
Viewing strictly by appointment – details below

Disclaimer

O’Riordan Bond Estate Agents Limited has not tested apparatus, equipment, fittings or services and so cannot verify they are in working order. The buyer is advised to obtain verification from their solicitor or surveyor.

O’Riordan Bond Far Cotton Sales
01604 706007

farcotton@oriordanbond.co.uk



TOTAL FLOOR AREA: 1271 sq.ft. (118.0 sq.m.) approx.
 Whilst every attempt has been made to ensure the accuracy of the floorplan contained here, measurements of doors, windows, rooms and any other items are approximate and no responsibility is taken for any error, omission or mis-statement. This plan is for illustrative purposes only and should be used as such by any prospective purchaser. The services, systems and appliances shown have not been tested and no guarantee is given as to their operability or efficiency can be given.
 Made with Metropix 62022

