



SCAN ME

# Villa Faro, Cumbre del Sol, Benitachell

A beautifully appointed three double bedroom, five-bathroom, detached villa, with panoramic sea and mountain views, built by renowned developers with more than 60 years' experience, in a tranquil setting within the popular Cumbre del Sol residential area, completing September 2024.

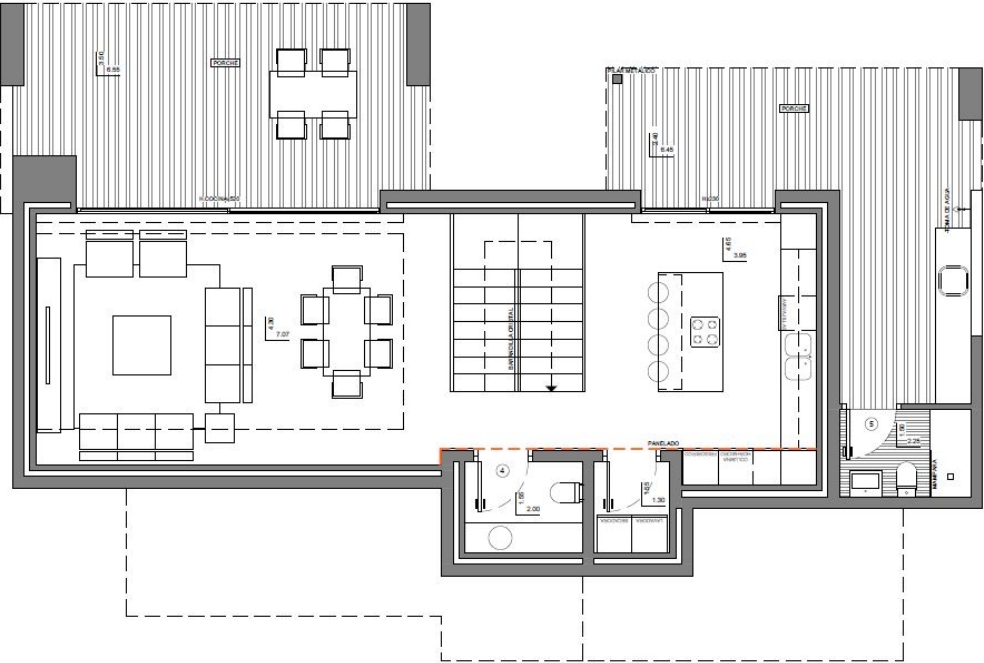
The villa has been finished to an exceptionally high standard with tiled floors throughout, an open plan kitchen/living room with large island, integrated Bosch appliances and a feature dividing oak staircase with oak ceiling in the living room. There are contemporary bathrooms and a large three-room basement that could easily be transformed into further accommodation or a separate apartment. Outside, there is gated driveway parking, a private infinity pool with jacuzzi and ample terracing and landscaped gardens.

- NEW Detached Villa
- Panoramic Sea & Mountain Views
- 539m2 Build
- 847m2 Plot
- Three Double Bedrooms with wardrobes
- Five Bathrooms (including pool shower room)
- Infinity Pool & Jacuzzi
- Fully equipped Kitchen with Island and Bosch Appliances
- Separate WC
- Laundry
- Airconditioning
- Underfloor Heating
- Secure Parking with Electric Gate
- Alarm
- Intercom System
- September 2024 Completion



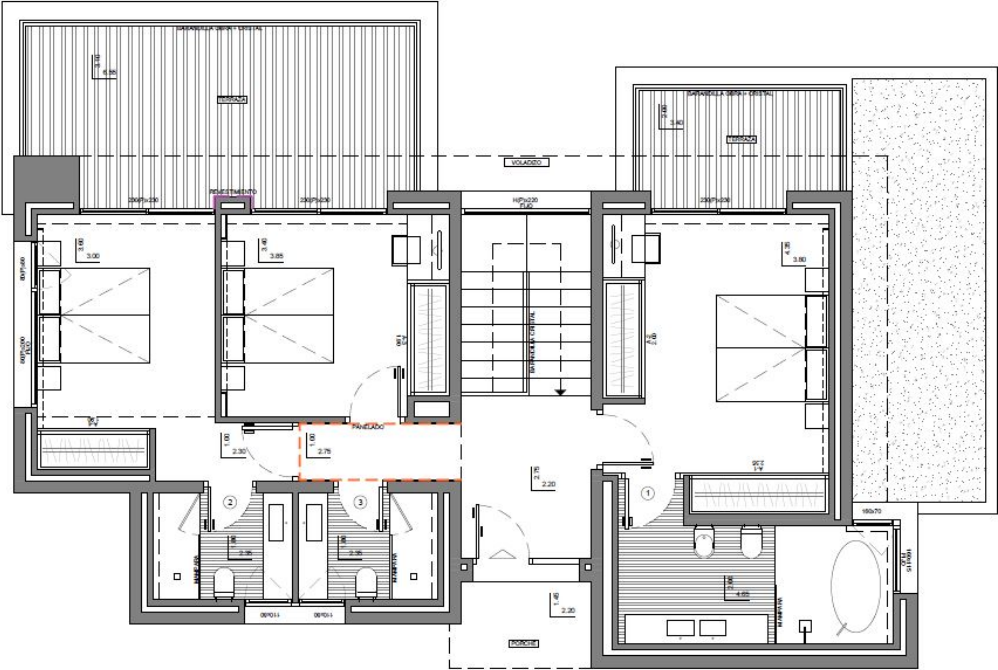
# Floor Plan

Escala Gráfica 0 1 2 3 4 5 6m

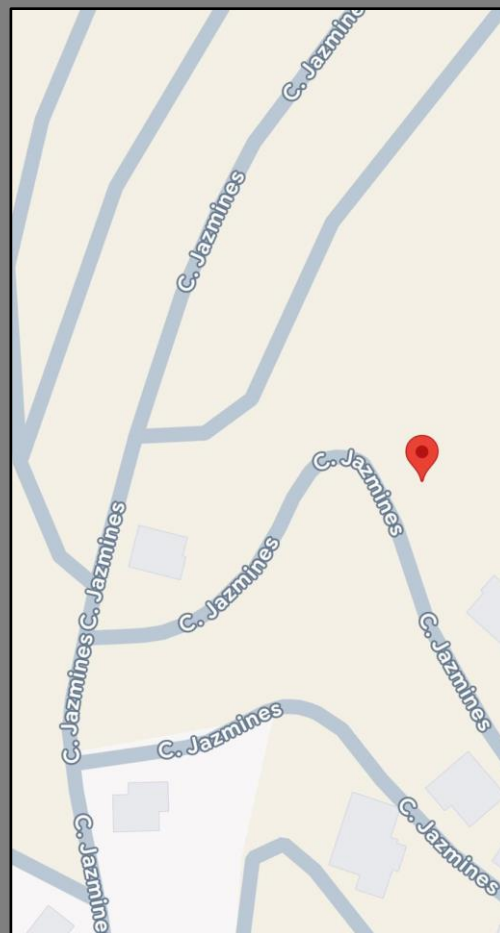
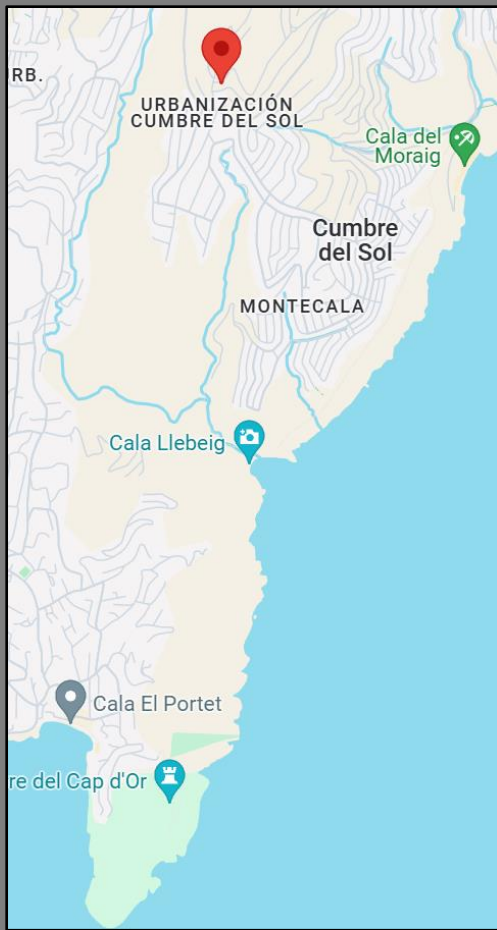


Lower floor

Escala Gráfica 0 1 2 3 4 5 6m



First floor



## Location

A unique destination within the desirable Jazmines area of the Cumbre del Sol residential development, a quiet, secure community, with a range of amenities close by, including a supermarket, pharmacy, international school, restaurants, several resident swimming pools, a horse riding centre, tennis and paddle courts, all in a convenient location just a short drive to the coastal towns of Moraira and Jávea.

**Bourne**

INTERNATIONAL

Office: Calle Doctor Calatayud 43a, Moraira, Alicante, 03724

Tel: 0034 60 447 25 90

[www.bourneinternational.es](http://www.bourneinternational.es)