



26 FIRS WOOD CLOSE, NORTHAW EN6 4BY

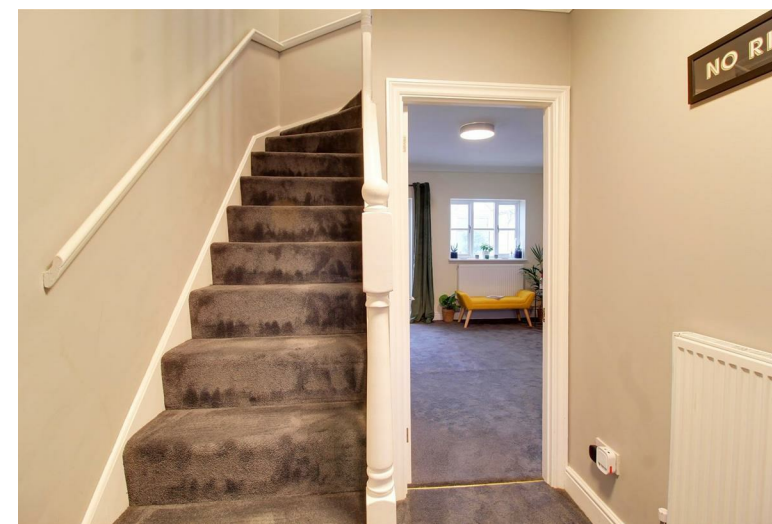
Asking Price £435,000 | Freehold

ANDREW WARD^{EST 1988}
ESTATE AGENTS



Property Overview

Set within a private parkland estate surrounded by countryside is this beautifully presented two double bedroom, two bathroom modern family home with parking and garden to rear enjoying far reaching views. The property offers well balanced living space comprising entrance hall, spacious living room with inter-connecting doors to conservatory and modern inter-grated kitchen. To the first floor the master bedroom benefits from built in wardrobes and en suite with the second bedroom enjoying far reaching countryside views and modern family bathroom. The property benefits from parking area and pretty garden to rear with use of tennis courts and parkland grounds.





Property Features

- Living Room: 13'5 x 13'5
- Conservatory: 11'8 x 8'6
- Kitchen: 7'7 x 6'11
- Beautifully Presented
- 7 Acres of Parkland Grounds
- Master Bedroom: 13'5 x 12'0 with En Suite
- Bedroom Two: 13'5 x 7'1
- Family Bathroom
- Tennis Courts
- Rear Garden Overlooking Fields

Agents Notes

Features also include double glazed windows throughout, window shutters have been installed, extended in the past to rear, modern fitted kitchen and bathrooms, beautiful parkland private grounds (7 acres). Viewing strictly by appointment.

We understand that there is a current maintenance charge of approximately £1,200 per annum.

