

POTTERS BAR
149 High Street, Potters Bar EN6 5BB
Tel: 01707 657181
Email: pottersbar@andrewward.co.uk

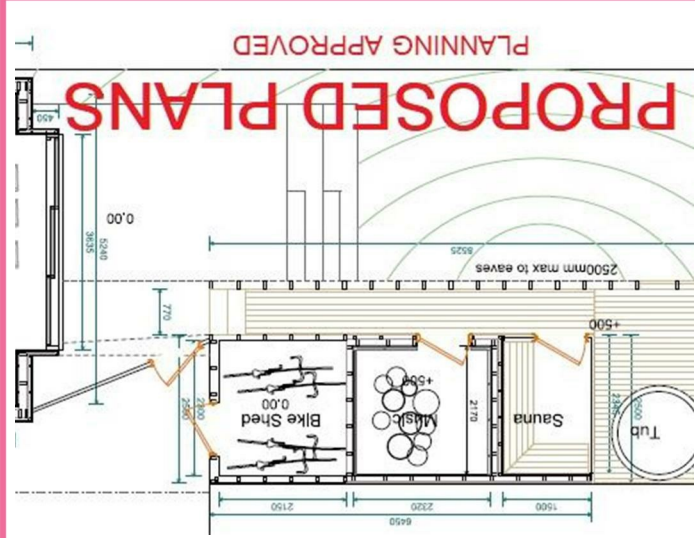
BROOKMANS PARK
35 Bradmore Green, Brookmans Park AL9 7QR
Tel: 01707 649779
Email: brookmanspark@andrewward.co.uk

BARNET
175 High Street, Barnet EN5 5SU
Tel: 020 8441 6000
Email: barnet@andrewward.co.uk

175 High Street, Barnet, Herts, EN5 5SU
020 8441 6000 | barnet@andrewward.co.uk
www.andrewward.co.uk

Our Offices

Contact us



203 BRUNSWICK PARK ROAD, LONDON N11 1EL

Asking Price £824,999 | Freehold



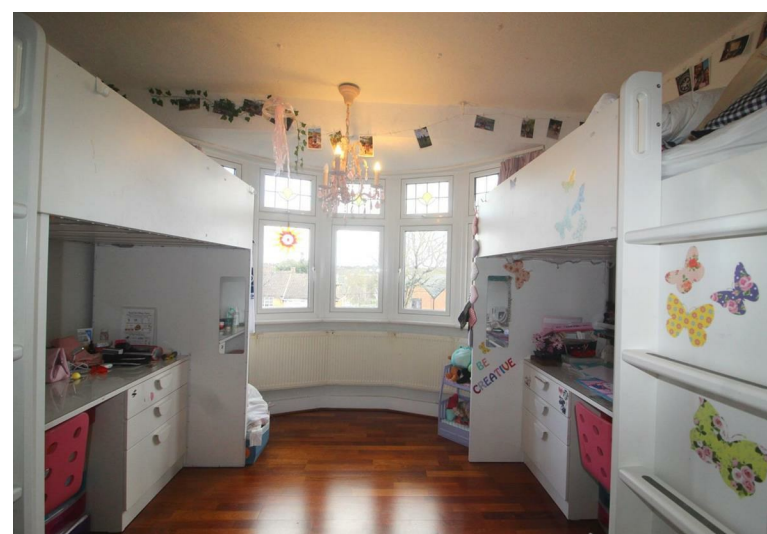
Property Overview

Stylish five bedroom, two bathroom semi-detached family home which has been thoughtfully extended to the loft and rear situated on Brunswick Park Road.

The property comprises of a bright and spacious living room with big bay window and feature fireplace. A large open plan kitchen / diner shaker style cabinetry, Quartz worktops, splash back ceramic brick tiles, Bertalozzi Range Master, integrated Samsung dishwasher, American fridge freezer, underfloor heating, oak flooring, sky lights and bifolding doors giving direct access to the westerly facing rear garden which also has planning permission for a garden studio / spa.

To first floor you will find a good sized master bedroom and a second double bedroom both with bay windows, a modern fully tiled contemporary bathroom with separate shower, and a third single bedroom. To second floor you will find a further two bedrooms and a shower room.

To the front of the property is a private driveway for off street parking.



Property Features

- LIVING ROOM - 12'5 X 11'1
- KITCHEN / DINING ROOM - 17'2 X 16'11
- BEDROOM 1 - 14'0 X 11'6
- BEDROOM 2 - 14'0 X 11'6
- PRIVATE DRIVEWAY
- BEDROOM 3 - 9'3 X 6'6
- BEDROOM 4 - 18'1 X 7'3
- BEDROOM 5 - 10'4 X 8'0
- BATHROOM - 8 X 6'2
- PLANNING PERMISSION FOR GARDEN STUDIO / SPA

Agents Notes

Further benefits include separate utility room and w/c, side access,

Brunswick Park Road is in close proximity to both New Southgate Train Station & Arnos Grove Station (Piccadilly Line) and all local bus links, schools and nursery's. and Brunswick Park.