

POTTERS BAR
 149 High Street, Potters Bar EN6 5BB
 Tel: 01707 657181
 Email: pottersbar@andrewward.co.uk

BROOKMANS PARK
 35 Bradmore Green, Brookmans Park AL9 7QR
 Tel: 01707 649779
 Email: brookmanspark@andrewward.co.uk

BARNET
 175 High Street, Barnet EN5 5SU
 Tel: 020 8441 6000
 Email: barnet@andrewward.co.uk

Our Offices

www.andrewward.co.uk
 020 8441 6000 | barnet@andrewward.co.uk
 175 High Street, Barnet, Herts, EN5 5SU

Contact us

Disclaimer: "These property particulars, including floor plans, are set out as a general outline only for guidance and DO NOT constitute any part of an offer or contract. Any purchaser or other must satisfy themselves by inspection or otherwise as to their accuracy. All measurements are given as approximate, no survey or testing of appliances has been carried out. No employee of Andrew Ward Estate Agents has the authority to make or give any representation or warranty in respect of the property."
 All enquiries and negotiations must be carried out through Andrew Ward Estate Agents.



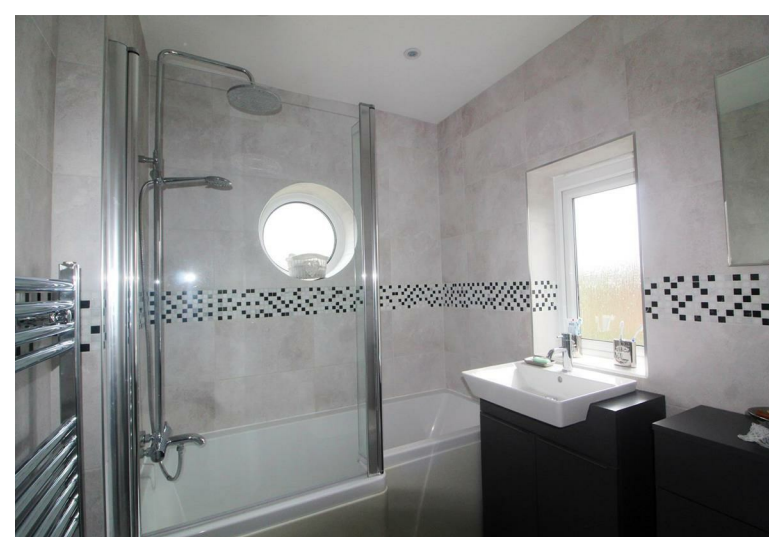
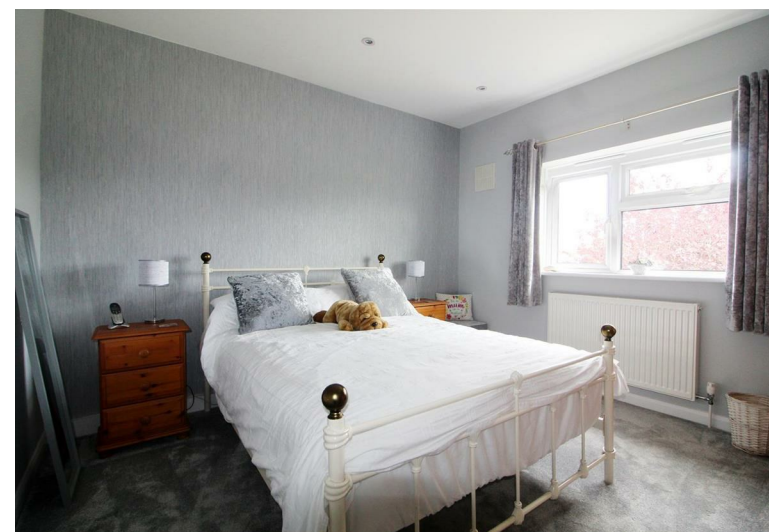
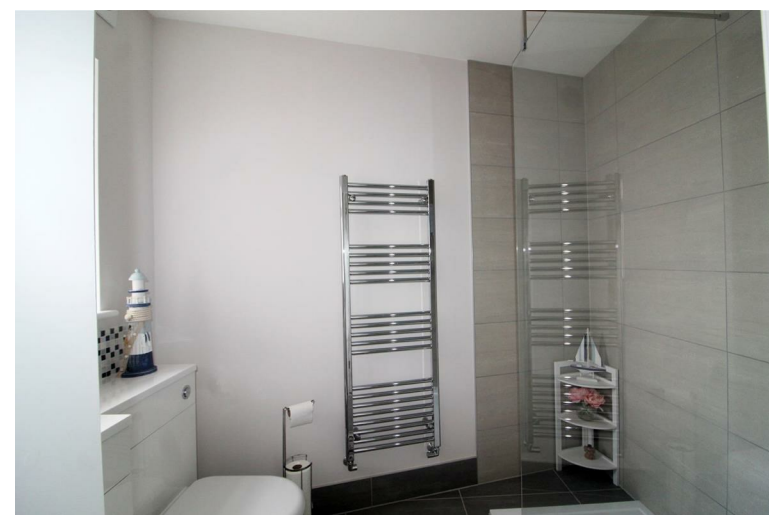
21 DORMER CLOSE, BARNET EN5 2QW

Asking Price £665,000 | Freehold



Property Overview

Introducing this stylish and thoughtfully refurbished two bedroom semi detached family home, situated in Dormer Close. The property comprises of a double fronted porch and a modern open plan kitchen, dining and living room which features a Howdens fully integrated handle less kitchen, a dual oven, an American style fridge freezer, a log burner and a large skylight. Leading through bi-folding doors is an impressive westerly facing landscaped garden with a large patio veranda and great for alfresco dining. You will also find a cosy living room which over looks the garden, a large contemporary showerroom and a utility room with access to the garden completing the ground floor. On the first floor there are two spacious double bedrooms, with built in storage cupboards in the master bedroom and is finished with a sleek bathroom that is fully tiled. A private driveway and landscaped garden can be found at the front of the property. Planning permission has been submitted for a Dormer loft extension.



Property Features

- LOUNGE - 14'8 X 11'11
- KITCHEN/DINING ROOM- 23'0 X 13'4
- BEDROOM - 10'9 X 10'8
- BATHROOM- 7'4 X 5'9
- CLOSE TO WHITINGS PRIMARY SCHOOL
- BEDROOM - 12'6 X 8'9
- SHOWER ROOM - 7'7 X 5'11
- LIVING ROOM- 11'11 X 10'10
- LARGE WESTERLEY GARDEN

Agents Notes

Further benefits include permitted development for master bedroom and en-suite in loft, a large utility room downstairs, a private driveway and side access.

Council tax band - D