

**POTTERS BAR**  
 149 High Street, Potters Bar EN6 5BB  
 Tel: 01707 657181  
 Email: pottersbar@andrewward.co.uk

**BROOKMANS PARK**  
 35 Bradmore Green, Brookmans Park AL9 7QR  
 Tel: 01707 649779  
 Email: brookmanspark@andrewward.co.uk

**BARNET**  
 175 High Street, Barnet EN5 5SU  
 Tel: 020 8441 6000  
 Email: barnet@andrewward.co.uk

**www.andrewward.co.uk**  
 175 High Street, Barnet, Herts, EN5 5SU  
 020 8441 6000 | barnet@andrewward.co.uk

**Our Offices**

**Contact us**

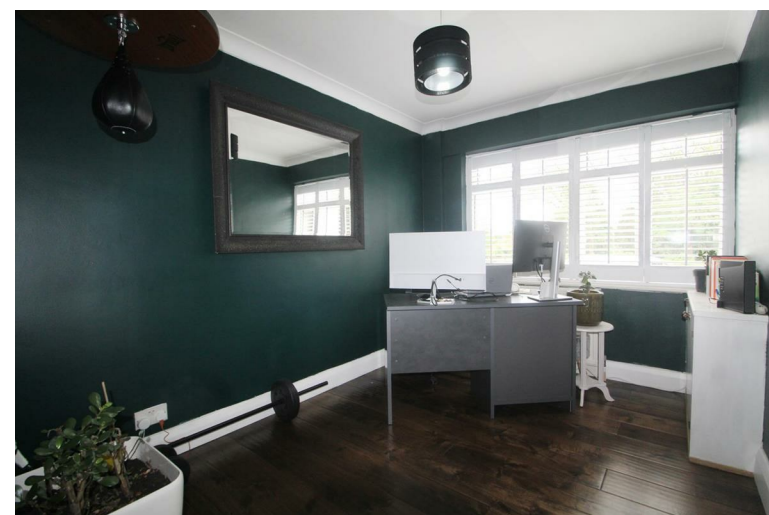


**Station Road, New Barnet, Barnet, EN5**



**33A STATION ROAD, BARNET EN5 1PH**

**Offers In Excess Of £1,400,000 | Freehold**



## Property Overview

Andrew Ward are proud to offer this beautifully presented and tastefully refurbished five bedroom, four bathroom detached family home boasting Circa. 2500 SQ FT situated on Station Road in New Barnet.

The ground floor comprises of a warm and cozy TV room and home office both featuring plantation shutters and engineered solid oak wood flooring throughout. A stylish open plan dual aspect shaker style kitchen / dining room complete with Quartz worktops, Range Master double oven and central island with extra storage which leads through French doors onto the bright and spacious living room with feature fireplace, cast iron radiators, with both rooms overlooking the beautifully landscaped south facing rear garden with decked sun terrace.

To first floor you will find a large master bedroom with walk in wardrobes and a trendy fully tiled en-suite shower room with big waterfall shower with his and hers vanity sinks, a contemporary family bathroom, three further double bedrooms all complete with plantation shutters, two with built in wardrobes which share a Jack and Jill bathroom and one with its own private balcony enjoying views of the garden.

To second floor is a fifth double bedroom with a cute modern bathroom with his and her sinks.

To the front of the property is a large driveway for ample parking.



## Property Features

- MAIN RECEPTION ROOM- 21'6 X 15'11
- RECEPTION ROOM 2 - 12'1 X 11'8
- KITCHEN- 11'10 X 11'7
- DINING ROOM- 11'2 X 10'6
- CIRCA. 2456 SQ FT
- MASTER BEDROOM- 17'7 X 16'0
- BEDROOM 2 - 17'11 X 15'9
- BEDROOM 3 -13'2 X 12'1
- BEDROOM 4 - 12'1 X 11'11
- BEDROOM 5 - 14'4 X 8'1

## Agents Notes

Further benefits include utility room, downstairs w/c, eaves storage, side access, front porch, spacious entrance hallway with window seat.