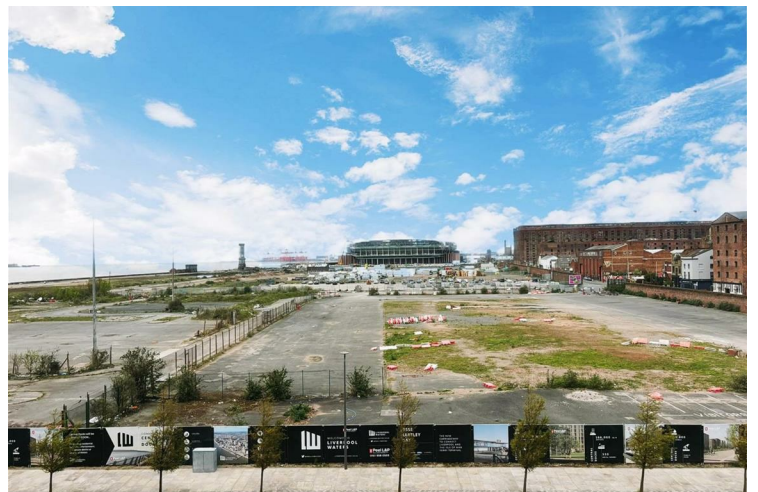




306 Quay Central Liverpool

£199,950
Leasehold

Mistoria Estate Agents are proud to bring to the market, this well located & well presented Third Floor Two bed apartment. Currently used as an investment property, This property offers modern living in a beautiful setting. Viewing of this property is a must!!!



- Superbly Presented Modern Two bedroom, third floor Apartment!!
- Set in a great location 2-3 mins from Liverpool Heart!!
- Close to Local Amenities, Schools and Transport Links.
- Allocated Parking, Intercom Access & Lifts to all Floors
- Great Sea & Estuary Views.

Full Description

Mistoria Estate Agents are pleased to welcome you to an unparalleled blend of luxury and investment opportunity in the heart of Liverpool. This stunning unfurnished two bedroom modern Apartment. This property exudes elegance and sophistication, offering a residence of distinction.

Upon entering, you are immediately captivated by the seamless design and high quality finishes throughout the spacious living area. Expansive windows flood the space with natural light, highlighting the modern aesthetic and creating a welcoming ambiance.

The gourmet kitchen has top of the line appliances, sleek counter tops, and custom cabinetry.

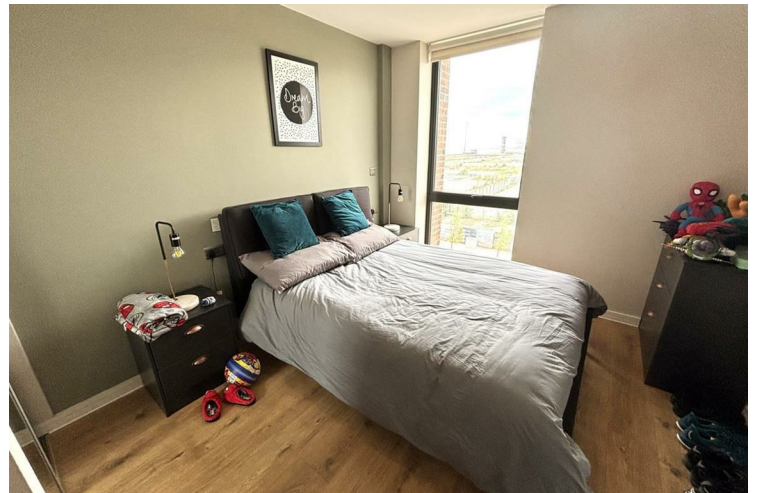
The two well appointed bedrooms provide a serene escape, each with ample storage space boasting up scale fixtures. The master suite, in particular, offers a private sanctuary, complete with a luxurious en-suite bathroom.

The central location ensures easy access to the city`s premier dining, shopping, and entertainment destinations.

This high end apartment is not just a home; it`s a strategic investment in luxury living. Seize the opportunity to own a property that seamlessly blends modern living in the cultural heart of Liverpool City centre Schedule your private showing today to appreciate the all the delights this property has to offer.

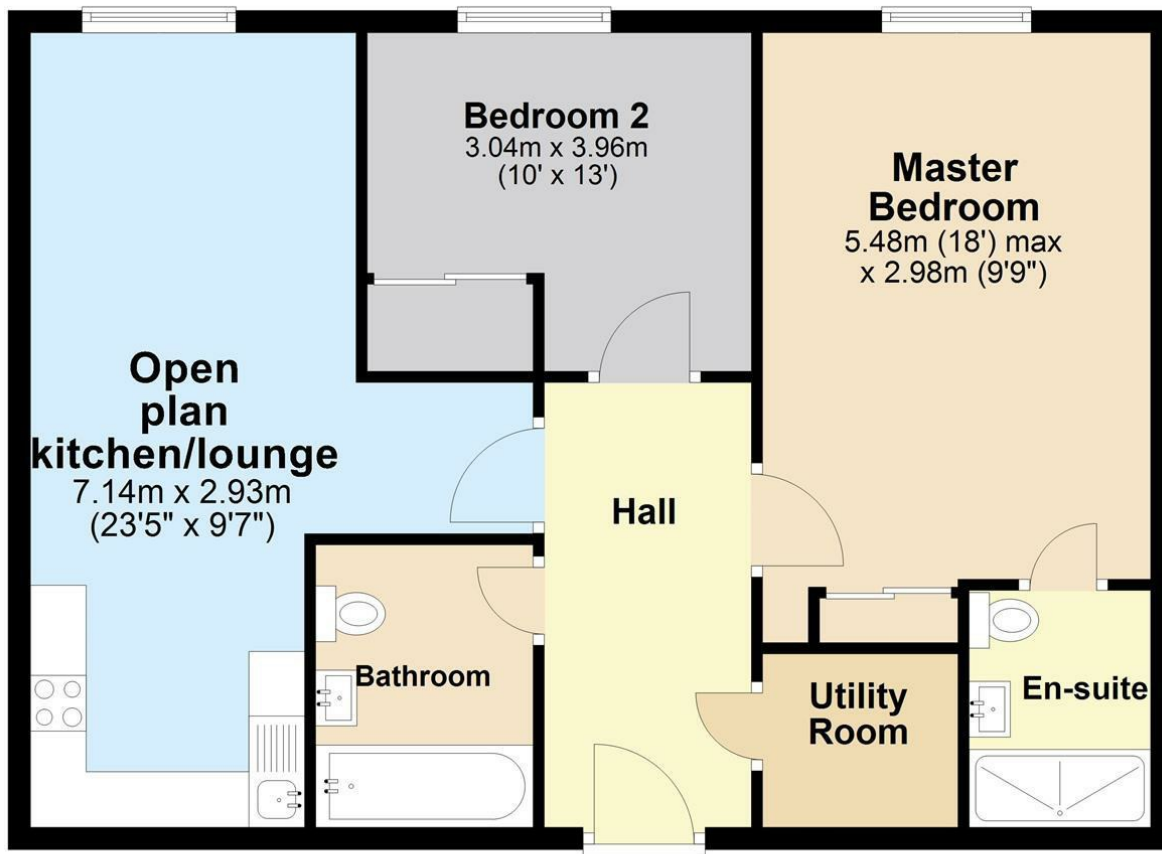


- Open Plan Lounge, Kitchen done to a superb standard.
- Master bedroom with fitted wardrobe and shower ensuite
- Currenly used as an Investment property as of condition & Location.
- Utility room, Modern bathroom, Viewing is a must.
- Call Mistoria Estate Agents today for a viewing!!!

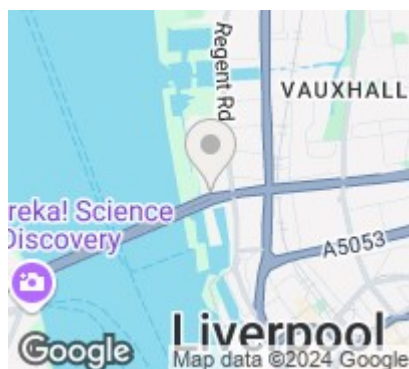


Third Floor

Approx. 70.0 sq. metres (753.4 sq. feet)



Total area: approx. 70.0 sq. metres (753.4 sq. feet)



Energy Efficiency Rating		
	Current	Potential
Very energy efficient - lower running costs		
(92 plus) A		
(81-91) B	82	82
(69-80) C		
(55-68) D		
(39-54) E		
(21-38) F		
(1-20) G		
Not energy efficient - higher running costs		
England & Wales	EU Directive 2002/91/EC	

Agents Note: Whilst every care has been taken to prepare these particulars, they are for guidance purposes only. All measurements are approximate and are for general guidance purposes only and whilst every care has been taken to ensure their accuracy, they should not be relied upon and potential buyers/tenants are advised to recheck the measurements

Pall Mall Liverpool Mistoria
22 Pall Mall
Liverpool
L3 6AL

0151 282 1539
info@mistoria.co.uk
mistoria.co.uk

