



MISTORIA
ESTATE AGENTS



Cambria Street Liverpool

£100

Nestled in the heart of Kensington, on the charming Cambria Street, this modern property offers an exceptional opportunity for those seeking a comfortable room in a shared house. The master bedroom, one of five in this well-appointed house share, provides a spacious and inviting atmosphere, perfect for relaxation and rest.

The property features a single reception room, which serves as a communal space for residents to unwind and socialise. The shared bathroom is conveniently located, ensuring ease of access for all housemates. With bills included in the rental price, you can enjoy a hassle-free living experience, allowing you to focus on what truly matters.

Kensington is renowned for its vibrant community and excellent amenities, including shops, cafes, and parks, all within easy reach. This location not only offers a comfortable living space but also the chance to immerse yourself in the rich culture and lifestyle that Kensington has to offer.



- Fully Furnished • Fibre Optic Internet • 1 Bedroom • All Bills Included • Available Now • Ideal for Students • Ideal for young professionals

Full Description

Are you a group of students or professionals looking for your ideal house? Stop the search! We've got just the house for you - 1 bedroom in a 5 Bed house share, all inclusive bills and just 1.2 miles from the main uni campuses!

This property has all the features a busy student/professional needs!

The property is laid out between two floors including five double bedrooms. This includes one on the ground floor and four to the first floor. All bedrooms include a double bed and mattress, wardrobe, chest of drawers and desk and chair. The rooms are complimented by a feature wall and ample power points for all your electrical devices. Each room can be locked by key which is extra security for your belongings as well as giving you some private time away from your housemates.

The living room consists of: two sofas, a wall mounted TV, a coffee table, and a dining table and chairs.

The fully fitted kitchen consists of: a fridge-freezer, a single oven and four hobs, a sink and drainer, a washing machine, kettle and a toaster which is all finished in a modern black and white effect.

There is one bathroom which consists of: a freestanding shower, toilet and sink.

The property has double glazing throughout and gas central heating.

There is a yard to the rear.

Deposits per person are £300 whilst providing a guarantor is also needed.

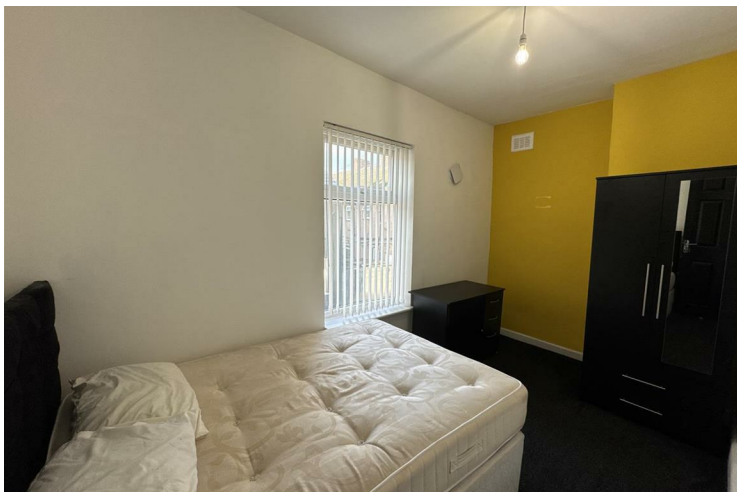
Bills are all included into the cost per week including Gas, Electric, Water, TV Licence and Wi-Fi.

Within two miles radius from the City Centre and from the two main Universities.

Call the office on opt 2) to arrange a viewing at your earliest convenience to avoid disappointment.

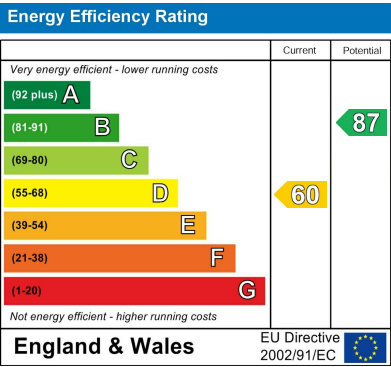
Disclaimer

The information and images provided in this property advertisement are intended for guidance purposes only. While we make every effort to ensure the accuracy of the details, we strongly recommend that interested parties view the property in person to confirm the property's condition and suitability for their specific requirements. The photographs used in this advertisement may have been digitally enhanced and may not accurately represent the current condition of the property. Any measurements or distances provided are approximate and should not be relied upon for any purpose. Furthermore, the description and details provided are based on the landlord's understanding and may be subject to change without notice. Prospective tenants are advised to verify any specific details that are important to them before entering into any agreement. We do not accept any liability for any loss or damage, whether direct or indirect, arising from reliance upon the information provided in this advertisement. We strongly advise all parties to



seek professional advice and conduct their own due diligence before making any decisions or commitments related to this property. By viewing this advertisement, you agree to the above disclaimer and acknowledge that any reliance on the information provided is at your own risk. Please note that this disclaimer is subject to change and may be updated without prior notice





Agents Note: Whilst every care has been taken to prepare these particulars, they are for guidance purposes only. All measurements are approximate and are for general guidance purposes only and whilst every care has been taken to ensure their accuracy, they should not be relied upon and potential buyers/tenants are advised to recheck the measurements

Pall Mall Liverpool Mistoria
22 Pall Mall
Liverpool
L3 6AL

0151 282 1539
info@mistoria.co.uk
mistoria.co.uk

