



**MISTORIA**  
ESTATE AGENTS



## Flat 4, 44 Pall Mall Liverpool

**£140,000**  
Leasehold

Nestled in the vibrant heart of Liverpool, this charming ground floor flat on Pall Mall offers a delightful blend of modern living and convenience. Spanning an impressive 743 square feet, this two-bedroom apartment is perfect for those seeking a comfortable urban lifestyle.

Upon entering, you are greeted by a spacious reception room that provides a warm and inviting atmosphere, ideal for both relaxation and entertaining. The open plan kitchen seamlessly integrates with the living space, creating a sociable environment where culinary delights can be prepared while engaging with family and friends.

The property features two well-proportioned bedrooms, providing ample space for rest and personalisation. The bathroom is thoughtfully designed, ensuring both functionality and comfort for daily routines.



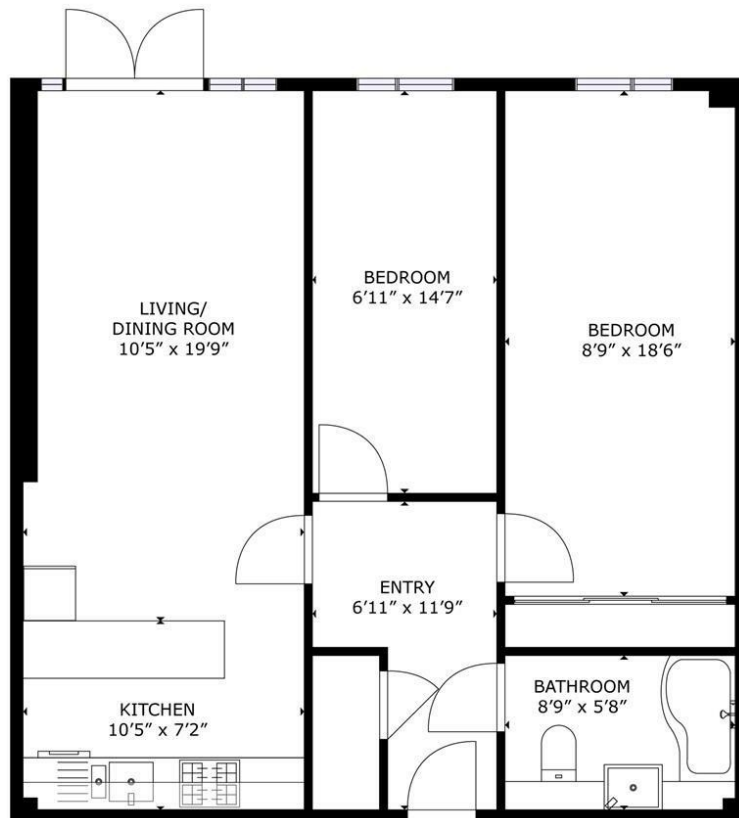
• Close to City Centre • NO CHAIN!!!! • VACANT POSSESSION • 2 Bed Apartment • Access to Terrace

#### Disclaimer

The information and images provided in this property advertisement are intended for guidance purposes only. While we make every effort to ensure the accuracy of the details, we strongly recommend that interested parties view the property in person to confirm the property's condition and suitability for their specific requirements. The photographs used in this advertisement may have been digitally enhanced and may not accurately represent the current condition of the property. Any measurements or distances provided are approximate and should not be relied upon for any purpose. Furthermore, the description and details provided are based on the landlord's understanding and may be subject to change without notice. Prospective tenants are advised to verify any specific details that are important to them before entering into any agreement. We do not accept any liability for any loss or damage, whether direct or indirect, arising from reliance upon the information provided in this advertisement



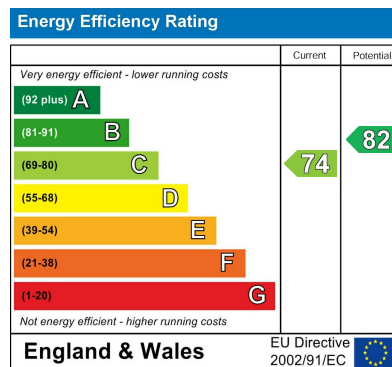




FLOOR 1

GROSS INTERNAL AREA  
TOTAL: 765 sq.ft

SIZES AND DIMENSIONS ARE APPROXIMATE, ACTUAL MAY VARY.



Agents Note: Whilst every care has been taken to prepare these particulars, they are for guidance purposes only. All measurements are approximate and are for general guidance purposes only and whilst every care has been taken to ensure their accuracy, they should not be relied upon and potential buyers/tenants are advised to recheck the measurements

Pall Mall Liverpool Mistoria  
22 Pall Mall  
Liverpool  
L3 6AL

0151 282 1539  
info@mistoria.co.uk  
mistoria.co.uk

