



BEETHAM TOWER 111, OLD HALL STREET

LIVERPOOL, L3 9BD

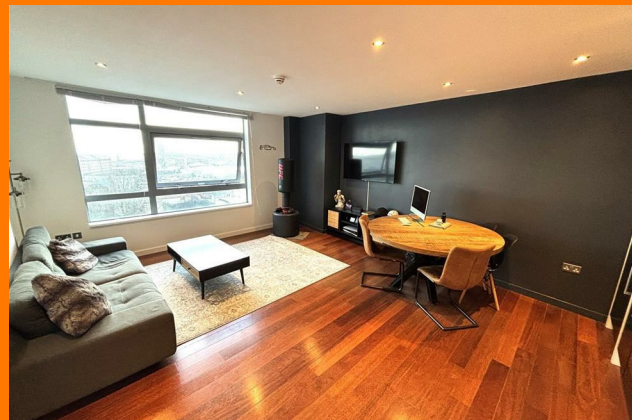
£115,000
LEASEHOLD

- WELL LOCATED, WELL PRESENTED 6TH FLOOR, ONE BED APARTMENT.
- CONCIERGE, LIFT TO ALL FLOORS, NO CHAIN !!!!!
- MODERN KITCHEN-DINER, INTEGRATED APPLIANCES.
- STUNNING VIEWS OF ESTUARY & THE SEA.
- IN HEART OF LIVERPOOL CITY CENTRE, NEAR AMENITIES & TRANSPORT LINKS.



BEETHAM TOWER 111, OLD

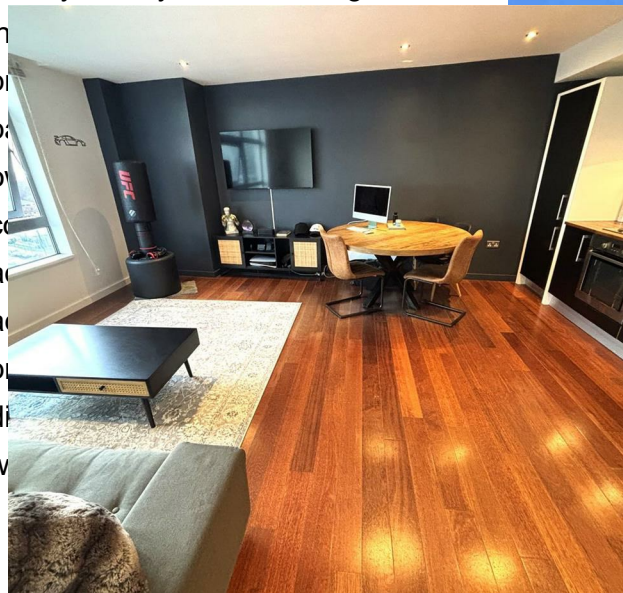
- SUPERBLY LOCATED & WELL PRESENTED ONE BED APARTMENT.
- SITUATED IN THE HEART OF THE CITY CENTRE.
- STUNNING SEA/ESTUARY VIEWS.
- OPEN PLAN LIVING WITH MODERN KITCHEN & INTREGATED APPLIANCES.
- CONCIERGE, LIFT TO ALL FLOORS, INTERCOM.
- MODERN BATHROOM & UTILITY.
- VACANT POSSESSION & NO CHAIN !!!
- NEAR AMENITIES, TRANSPORT LINKS & CITY CENTRE.
- IDEAL FTB OR INV AS OF LOCATION & PRICE. LEASEHOLD.
- CALL MISTORIA ESTATE AGENTS TODAY TO ARRANGE YOUR VIEWING!!!



Disclaimer:

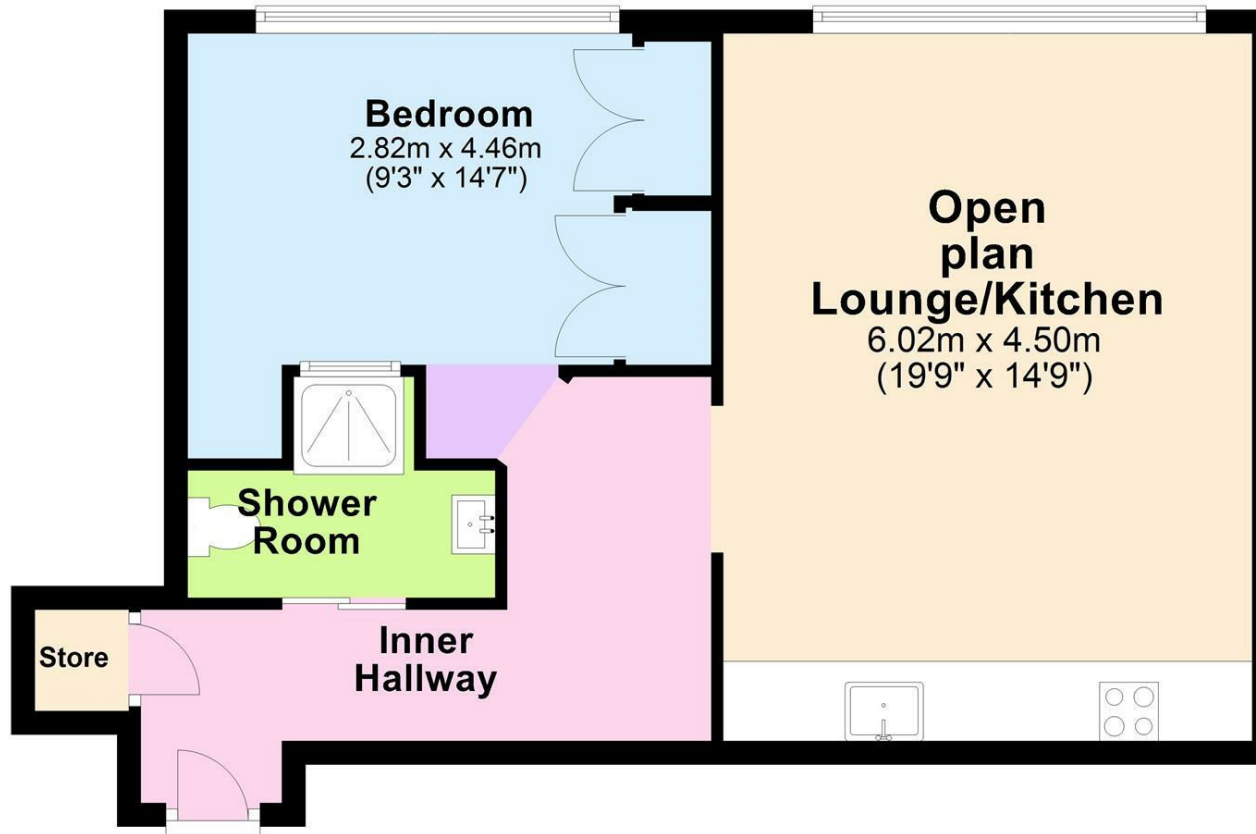
The
adv
only
acc
inte
con
spe
adv
ma
the
pro
up
and
und

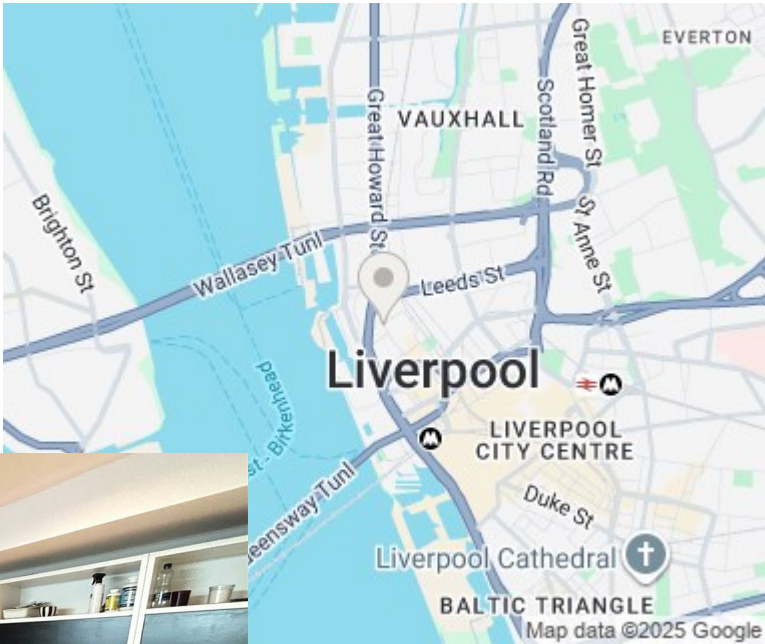
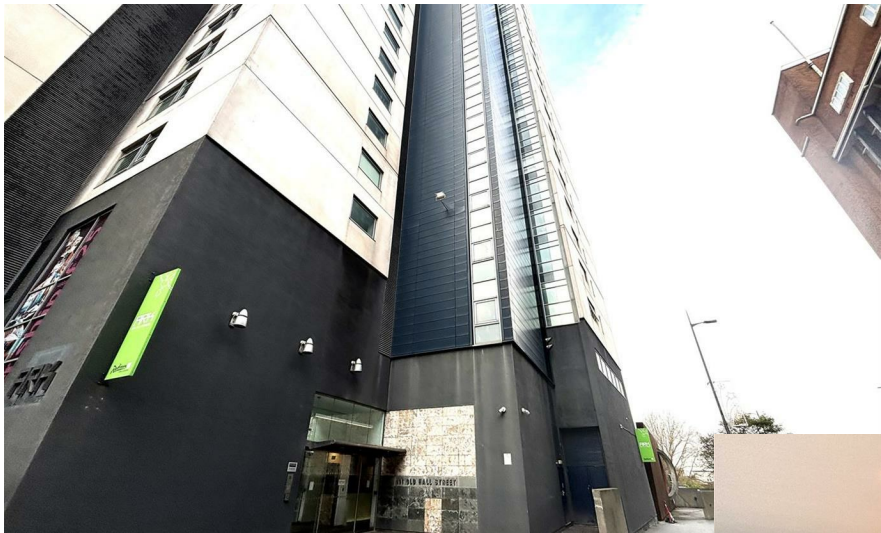
notice. Prospective tenants are advised to read the specific details that are important to them before entering into any agreement. We do not accept liability for any loss or damage, whether in whole or in part, arising from the use of the information provided on this website.




BEETHAM TOWER 111, OLD

Ground Floor





Energy Efficiency Rating		
	Current	Potential
Very energy efficient - lower running costs		
(92 plus) A	79	
(81-91) B		
(69-80) C		
(55-68) D		
(39-54) E		
(21-38) F		
(1-20) G		
Not energy efficient - higher running costs		
England & Wales		EU Directive 2002/91/EC 



Agents Note: Whilst every care has been taken to prepare these particulars, they are for guidance purposes only. All measurements are approximate and are for general guidance purposes only and whilst every care has been taken to ensure their accuracy, they should not be relied upon and potential buyers/tenants are advised to recheck the measurements

Pall Mall Liverpool Mistoria
22 Pall Mall
Liverpool
L3 6AL

0151 282 1539
info@mistoria.co.uk
mistoria.co.uk

