



MISTORIA
ESTATE AGENTS



2105 Beetham Tower Liverpool

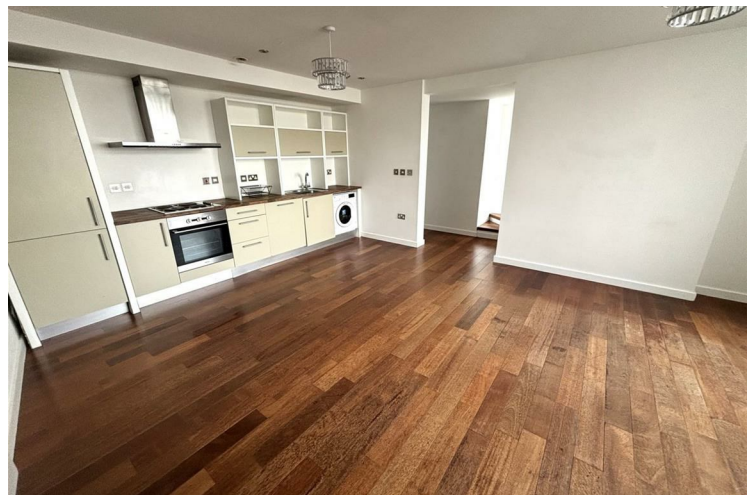
£110,000
Leasehold

Nestled in the iconic Beetham Tower, this modern apartment offers a unique opportunity for both investors and those seeking a stylish urban residence. Spanning an impressive 710 square feet, the property is situated on the 21st floor, providing breathtaking views of the river and the vibrant cityscape below.

The apartment features a well-appointed reception room, perfect for entertaining guests or enjoying a quiet evening in. The spacious bedroom offers a serene retreat, while the contemporary bathroom is designed with comfort and convenience in mind.

Currently, the property has tenants in situ, making it an ideal investment opportunity for those looking to expand their portfolio. Alternatively, it presents a wonderful chance for anyone wishing to embrace city living in a sought-after location.

With its modern design and prime position, this apartment in Beetham Tower is not just a home; it is a lifestyle choice that combines luxury with the excitement of urban living. Do not miss the chance to make this exceptional property your own.



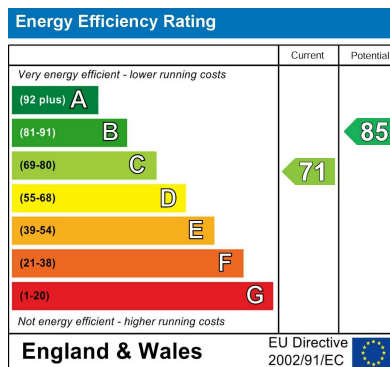
- AMAZING RIVER VIEWS • INTERCOM • FULLY FITTED KITCHEN • SECURE ENTRY SYSTEM • 24HR CONCIERGE • CITY CENTRE LIVING • NO CHAIN!!!

Disclaimer:

The information and images provided in this property advertisement are intended for guidance purposes only. While we make every effort to ensure the accuracy of the details, we strongly recommend that interested parties view the property in person to confirm the property's condition and suitability for their specific requirements. The photographs used in this advertisement may have been digitally enhanced and may not accurately represent the current condition of the property. Any measurements or distances provided are approximate and should not be relied upon for any purpose. Furthermore, the description and details provided are based on the landlord's understanding and may be subject to change without notice. Prospective tenants are advised to verify any specific details that are important to them before entering into any agreement. We do not accept any liability for any loss or damage, whether direct or indirect, arising from reliance upon the information provided in this advertisement. We strongly advise all parties to seek professional advice and conduct their own due diligence before making any decisions or commitments related to this property. By viewing this advertisement, you agree to the above disclaimer and acknowledge that any reliance on the information provided is at your own risk. Please note that this disclaimer is subject to change and may be updated without prior notice







Agents Note: Whilst every care has been taken to prepare these particulars, they are for guidance purposes only. All measurements are approximate and are for general guidance purposes only and whilst every care has been taken to ensure their accuracy, they should not be relied upon and potential buyers/tenants are advised to recheck the measurements

Pall Mall Liverpool Mistoria
22 Pall Mall
Liverpool
L3 6AL

0151 282 1539
info@mistoria.co.uk
mistoria.co.uk

