



MISTORIA
ESTATE AGENTS



91 Critchley Road Liverpool

£174,950

Freehold

Mistoria Estate Agents are pleased to bring to the market this three bed semi detached house nestled on the desirable Critchley Road in Liverpool, this well-located three-bedroom semi-detached home presents an excellent opportunity for families and professionals alike. The property is in good condition and boasts a spacious layout, making it an ideal choice for those seeking comfort and convenience.

Upon entering, you are welcomed into a bright and airy lounge, perfect for relaxation or entertaining guests. The heart of the home is the large open-plan kitchen diner, which offers ample space for family meals and gatherings. Additionally, a utility room provides extra storage and practicality.

The property features three well-proportioned bedrooms, ensuring plenty of room for family or guests. The large family bathroom is thoughtfully designed, catering to the needs of a busy household.

Outside, the private rear garden is a delightful retreat, complete with a brick outbuilding that can serve various purposes, from a garden shed to a workshop. Off-road parking is available for 2-3 cars,



- WELL LOCATED THREE BED SEMI DETACHED HOUSE. • GOOD STANDARD THROUGHOUT. UPVC DG & GCH. • LOUNGE, OPEN PLAN KITCHEN-DINER. • OFF ROAD PARKING FOR 2-3 CARS, PRIVATE REAR WITH OUT HOUSE. • THREE BEDROOMS AND LARGE FAMILY BATHROOM.

Disclaimer

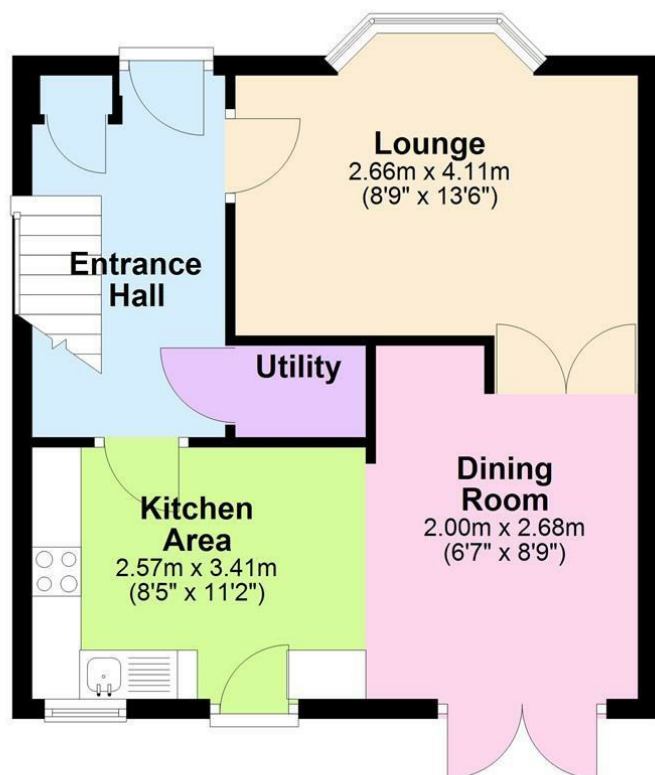
Disclaimer: The information and images provided in this property advertisement are intended for guidance purposes only. While we make every effort to ensure the accuracy of the details, we strongly recommend that interested parties view the property in person to confirm the property's condition and suitability for their specific requirements. The photographs used in this advertisement may have been digitally enhanced and may not accurately represent the current condition of the property. Any measurements or distances provided are approximate and should not be relied upon for any purpose. Furthermore, the description and details provided are based on the landlord's understanding and may be subject to change without notice. Prospective tenants are advised to verify any specific details that are important to them before entering into any agreement. We do not accept any liability for any loss or damage, whether direct or indirect, arising from reliance upon the information provided in this advertisement. We strongly advise all parties to seek professional advice and conduct their own due diligence before making any decisions or commitments related to this property. By viewing this advertisement, you agree to the above disclaimer and acknowledge that any reliance on the information provided is at your own risk. Please note that this disclaimer is subject to change and may be updated without prior notice



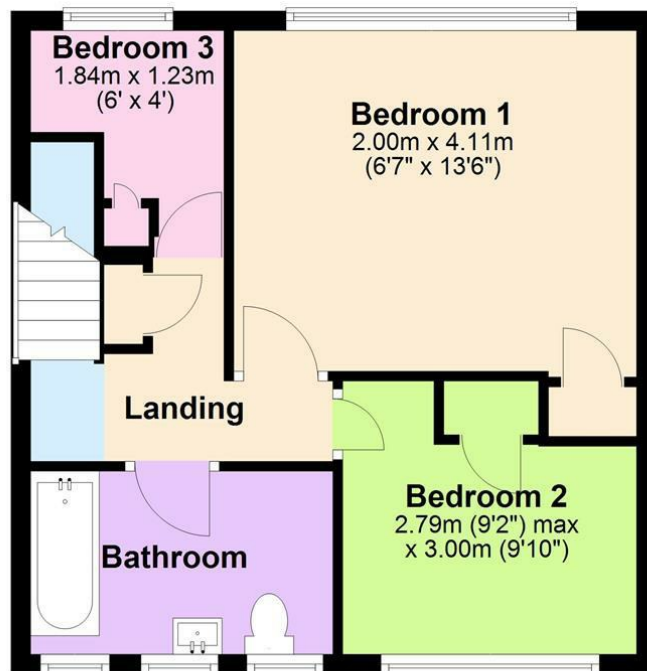
- IDEAL PROPERTY AS OF SIZE, CONDITION & LOCATION.
- PROPERTY WILL BE VACANT POSSESSION & NO CHAIN!!!!
- NEAR LOCAL AMENITIES, SCHOOLS & TRANSPORT LINKS.
- GREAT VALUE PROPERTY DONT MISS IT.
- CALL MISTORIA ESTATE AGENTS TODAY TO GET YOUR VIEWING.



Ground Floor



First Floor



Energy Efficiency Rating		
	Current	Potential
Very energy efficient - lower running costs		
(92 plus) A		
(81-91) B		
(69-80) C		
(55-68) D		
(39-54) E		
(21-38) F		
(1-20) G		
Not energy efficient - higher running costs		
England & Wales	EU Directive 2002/91/EC	

Agents Note: Whilst every care has been taken to prepare these particulars, they are for guidance purposes only. All measurements are approximate and are for general guidance purposes only and whilst every care has been taken to ensure their accuracy, they should not be relied upon and potential buyers/tenants are advised to recheck the measurements

Pall Mall Liverpool Mistoria
22 Pall Mall
Liverpool
L3 6AL

0151 282 1539
info@mistoria.co.uk
mistoria.co.uk

