



MISTORIA
ESTATE AGENTS



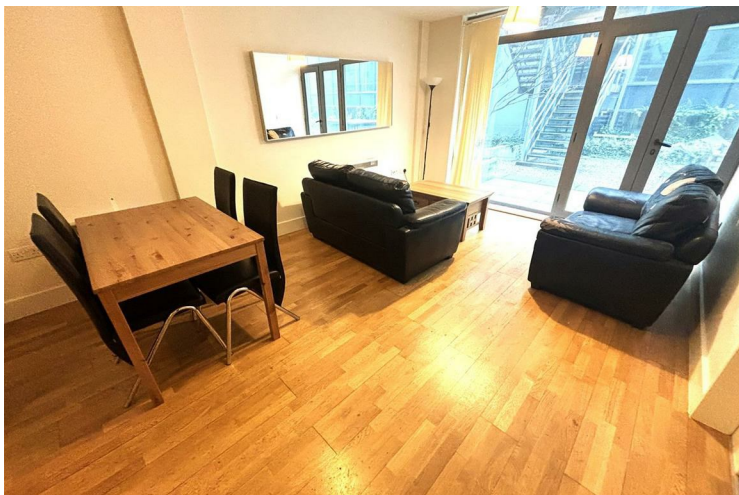
**10 Circle 109, 79 Henry Street,
Liverpool, L1 5BU**

£155,000
Leasehold



MISTORIA
ESTATE AGENTS

- WELL LOCATED TWO BED TWO BATH, GFLOOR APARTMENT.
- CITY CENTRE LOCATION. TERRACE.
- MASTER ENSUITE. MAIN BATHROOM.
- ALLOCATED PARKING, INTERCOM ENTRY & LIFT.
- NEAR AMENITIES, TRANS LINKS & CITY CENTRE.
- VACANT POSSESSION & NO CHAIN!!!

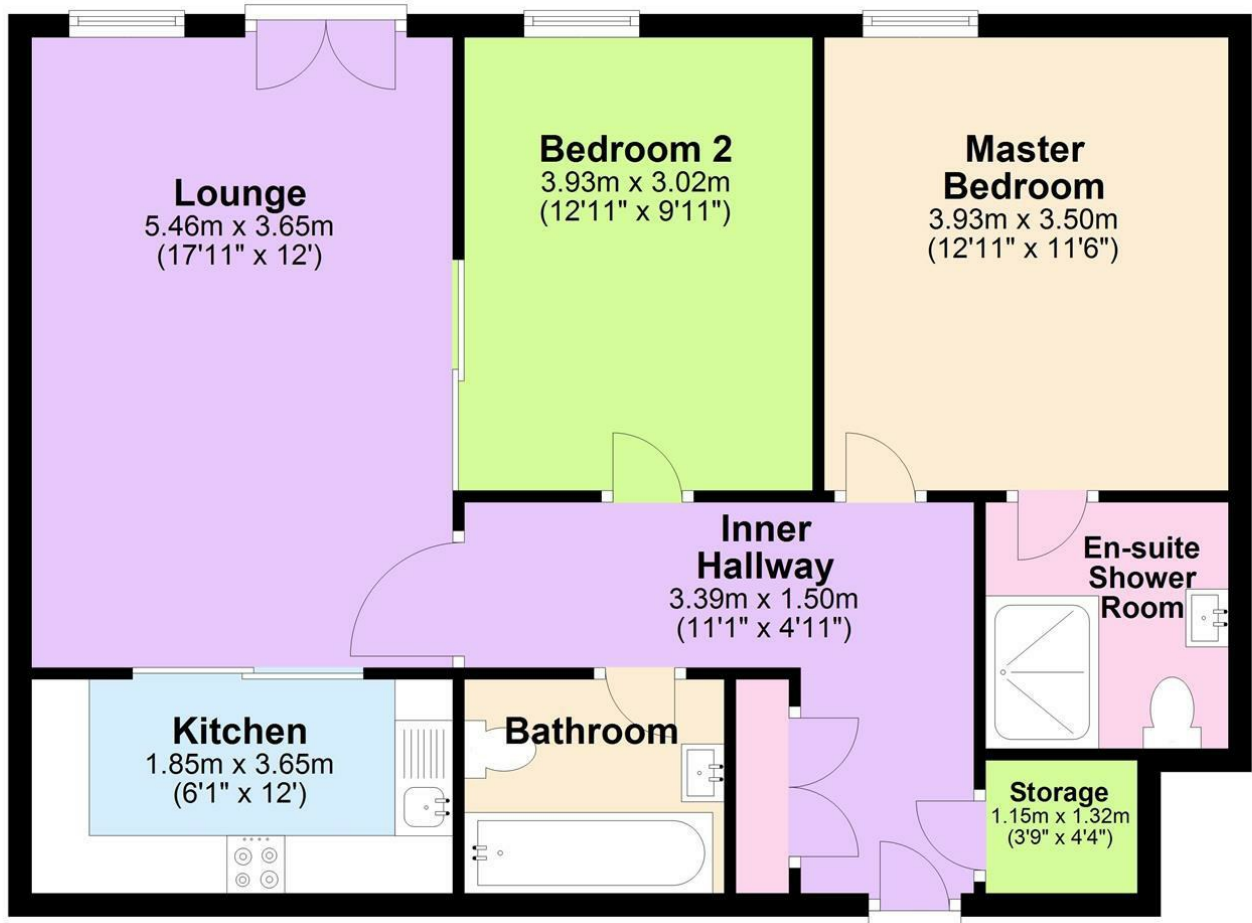


• WELL LOCATED TWO BED TWO BATHROOM 1ST FLOOR APARTMENT • CITY CENTRE LOCATION, NEAR AMENITIES & TRANSPORT LINKS • MASTER ENSUITE SHOWER ROOM, FAMILY BATHROOM • GOOD SIZED BEDROOMS, LARGE LOUNGE WITH FRENCH DOORS ONTO TERRACE.

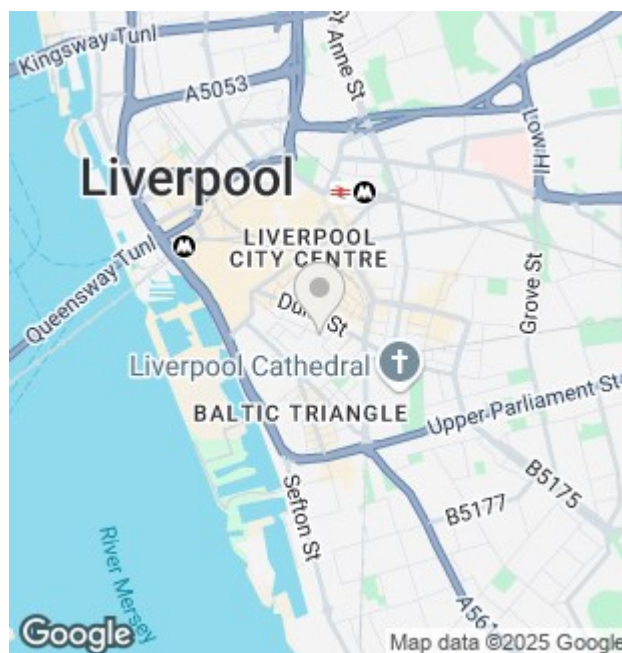
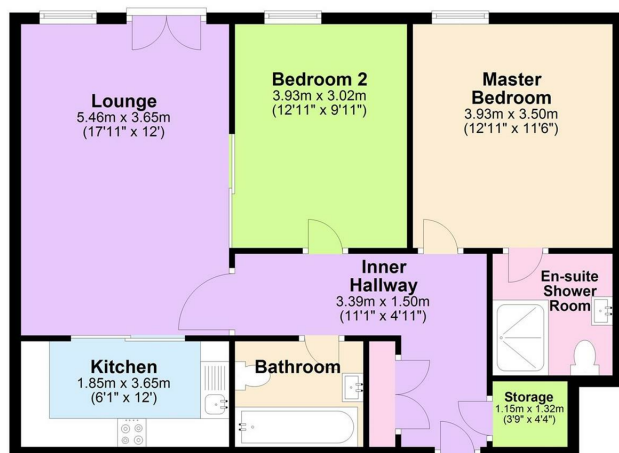


• SECURE ALLOCATED PARKING, INTERCOM ACCESS AND LIFT. • CURRENTLY USED AS AN INVESTMENT PROPERTY, NO CHAIN!!! • UPVC DG & ELECTRIX HEATING. UTILITY CUPBOARD. • MODERN BATHROOM & KITCHEN. • LEASEHOLD GR £100 pa. SC £2500 pa. • CALL MISTORIA ESTATE AGENTS TODAY TO GET YOUR VIEWING!!!!

First Floor



First Floor



Energy Efficiency Rating

	Current	Potential
Very energy efficient - lower running costs		
(92 plus) A		
(81-91) B		82
(69-80) C		
(55-68) D	62	
(39-54) E		
(21-38) F		
(1-20) G		
Not energy efficient - higher running costs		
England & Wales	EU Directive 2002/91/EC	



Agents Note: Whilst every care has been taken to prepare these particulars, they are for guidance purposes only. All measurements are approximate and are for general guidance purposes only and whilst every care has been taken to ensure their accuracy, they should not be relied upon and potential buyers/tenants are advised to recheck the measurements

Pall Mall Liverpool Mistoria
22 Pall Mall
Liverpool
L3 6AL

0151 282 1539
info@mistoria.co.uk
mistoria.co.uk

