



**MISTORIA**  
ESTATE AGENTS



## A1110 31 Strand Street Liverpool

£695 PCM

Mistoria are pleased to offer for rent this furnished contemporary studio apartment in One Park West, Liverpool's most prestigious address. Designed by acclaimed architect Cesar Pelli, One Park West is situated in the heart of Liverpool's city Centre with excellent access to local amenities and attractions, including Liverpool one with over twenty restaurants, one hundred and fifty shops and a fourteen-screen cinema.

PROPERTY is FURNISHED WITH A SINGLE BED & A WARDROBE.

AVAILABLE NOW - VERY POPULAR BUILDING LOVELY PROPERTY

The apartment is situated on the 11th floor with views of the city and comprises an open plan living and dining area, fitted kitchen with integrated appliances and a contemporary bathroom tiled with Italian



• CH • INTERCOM • F KIT • WFLOORS • CONTEMPORAY APA • LIFT ACCESS • NO SMOKING • STUDENTS WELCOM

### Full Description

Mistoria are pleased to offer for rent this furnished contemporary studio apartment in One Park West, Liverpool's most prestigious address. Designed by acclaimed architect Cesar Pelli, One Park West is situated in the heart of Liverpool's city Centre with excellent access to local amenities and attractions, including Liverpool one with over twenty restaurants, one hundred and fifty shops and a fourteen-screen cinema.

PROPERTY is FURNISHED WITH A SINGLE BED & A WARDROBE.

AVAILABLE NOW - VERY POPULAR BUILDING LOVELY PROPERTY - IDEAL FOR STUDENTS

The apartment is situated on the 11th floor with views of the city and comprises an open plan living and dining area, fitted kitchen with integrated appliances and a contemporary bathroom tiled with Italian ceramics. 284 Sq ft Viewing is highly recommended for this lovely property.

Communal entrance.

A stunning, contemporary concierge area offers 24/7 security and concierge services. The large space features a seating area, post boxes and lifts with stairs to all floors.

Versatile bright open plan sleeping, living and dining area with double glazed windows, wall-mounted radiators and neutrally painted throughout. Wooden flooring, TV, telephone and power points.

### Kitchen

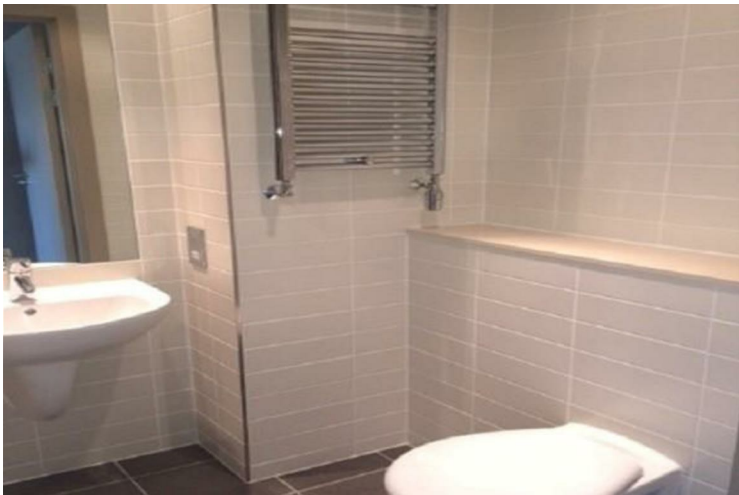
Fitted contemporary kitchen with grey gloss cabinets, stainless steel handles and integrated appliances including oven, hob, extractor and fridge/freezer. Wall mounted power points. Dark tiled flooring.

### Bathroom


A three piece suite comprising WC, pedestal wash basin, panelled bath with Hansgrohe Raindance shower over and glass screen, heated towel rail. Large mirror above wash basin and tiled with Italian ceramics.

STRICTLY NO SMOKING NO PETS POLICY







Energy Efficiency Rating		
	Current	Potential
<i>Very energy efficient - lower running costs</i>		
(92 plus) <b>A</b>		
(81-91) <b>B</b>	82	82
(69-80) <b>C</b>		
(55-68) <b>D</b>		
(39-54) <b>E</b>		
(21-38) <b>F</b>		
(1-20) <b>G</b>		
<i>Not energy efficient - higher running costs</i>		
<b>England &amp; Wales</b>	EU Directive 2002/91/EC 	

Agents Note: Whilst every care has been taken to prepare these particulars, they are for guidance purposes only. All measurements are approximate and are for general guidance purposes only and whilst every care has been taken to ensure their accuracy, they should not be relied upon and potential buyers/tenants are advised to recheck the measurements

Pall Mall Liverpool Mistoria  
 22 Pall Mall  
 Liverpool  
 L3 6AL

0151 282 1539  
 info@mistoria.co.uk  
 mistoria.co.uk

