



7 Burma Close, Haywards Heath, West Sussex RH16 3JE

Guide Price £675,000 – £700,000





A very big 4 double bedroom detached house on an enormous plot situated very end of a short cul-de-sac within the popular Northlands Wood Area on the towns south eastern edge close to an excellent primary school, hospital, countryside and within a short walk of the village of Lindfield.

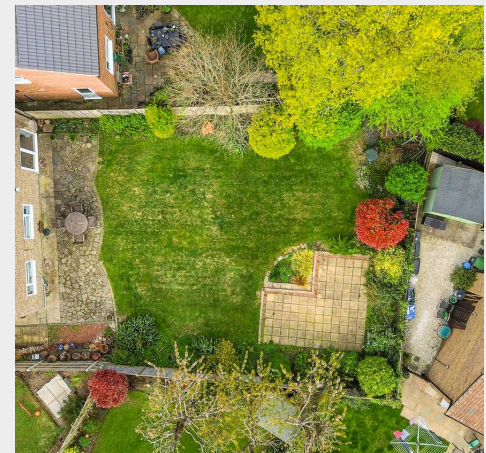
Tenure: Freehold

- Family home on huge plot in popular area
- Quiet cul-de-sac close to a popular primary school
- 56' x 28' front & 62' x 44' rear garden
- Private driveway and attached double garage
- Tremendous potential for various extensions STPP
- Hall, cloakroom, 3 separate reception rooms
- Spacious kitchen with door to garden
- Master bedroom with en-suite shower room
- 3 Further big bedrooms and bathroom
- Close to countryside and The Snow Drop Inn pub
- Easy level walk to hospital via Lewes Road
- Could be for sale with no onward chain
- Council Tax Band 'F' and EPC 'C'



Location

Burma Close Is situated off Charlesworth Park, which intern is located off Marlow Drive within the very popular Northlands Wood Area on the towns south/eastern outskirts. This established residential area is particularly popular with families and those working at the hospital And is very close to the highly regarded Northlands Wood primary school And within a 15 minute walk of the hospital. Nearby facilities include the excellent primary school, a Tesco express store, the Northwood Medical Practise and Pharmacy. Countryside is close by and the quaint Snow Drop Inn pub is within a 10 minute walk. An Alleyway and footpath leads from Charlesworth Park through to the Lewes Road Which makes walking to the hospital far quicker and with no hills. Children from this side of town go onto Oathall Community college with its farm The town also has a 6th form college and leisure Centre. The picturesque Village of Lindfield is within a 15–20 minute walk with its traditional High Street, large common and a good range of shops/pub/restaurants. Haywards Heath Town Centre is just over a mile on foot whilst a bus service runs close by linking with the town, the neighbour district and the railway station which is just over 2 miles by car. By road access to the major surrounding areas can be easily gained via the A272 and A/M23, The latter lying about 7 miles to the West at Bolney or Warninglid.

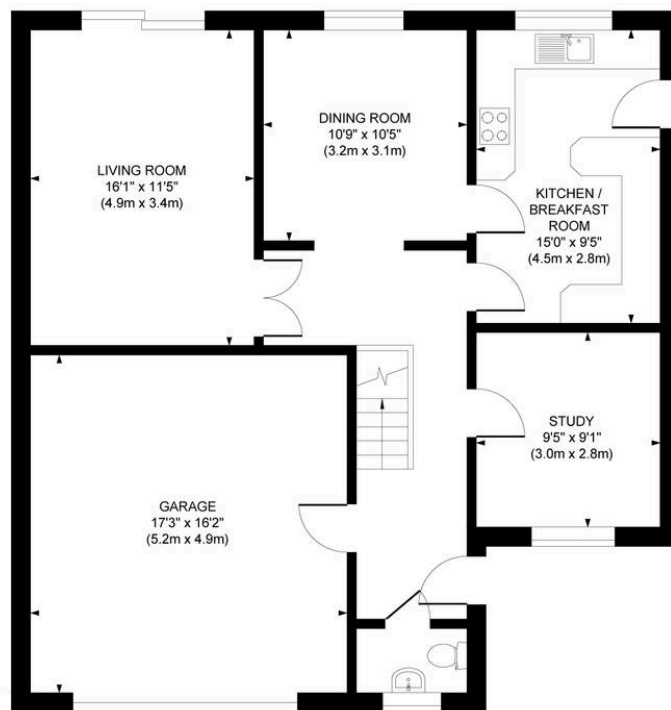


Approximate Gross Internal Area

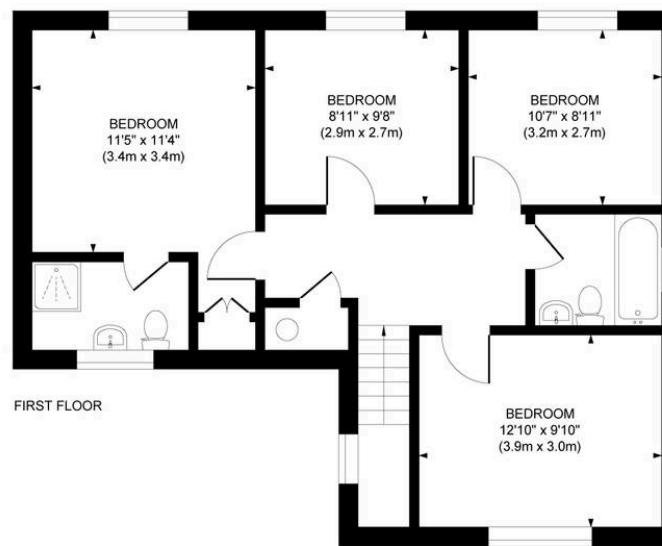
Main House 1377 sq. ft / 127.89 sq. m

Garage 279 sq. ft / 25.93 sq. m

Total 1656 sq. ft / 153.84 sq. m



GROUND FLOOR



FIRST FLOOR

This plan is for layout guidance only. Not drawn to scale unless stated. Whilst every care is taken in the preparation of this plan, please check all dimensions, shapes and compass bearings before making decisions reliant upon them.

Mansell McTaggart Haywards Heath
Mansell McTaggart Estate Agents, 7 Muster Green South – RH16 4AP
01444 456431

hh@mansellmctaggart.co.uk

www.mansellmctaggart.co.uk/branch/haywardsheath

Consumer Protection from Unfair Trading Regulations 2008 We have not tested any apparatus, equipment, fixtures, fittings or services and so cannot verify that they are in working order or fit for purpose. You are advised to obtain verification from your solicitor or surveyor. References to the tenure of a property are based on information supplied by the seller. We have not had sight of the title documents and a buyer is advised to obtain verification from their solicitor. Items shown in photographs are not included unless specifically mentioned within the sales particulars, but may be available by separate negotiation.