



**MANSELL  
McTAGGART**  
Trusted since 1947



29 Pepper Drive, Burgess Hill, West Sussex, RH15 9UZ

£375,000



## 29 Pepper Drive

Burgess Hill, West Sussex, RH15 9UZ

A 3 bedroom end of terrace house with a north west facing rear garden and a private driveway to garage. The property was built in 1996 and is prominently situated within this select block paved close. Via a pedestrian cut through the town centre and mainline railway station are less than a mile away. St Wilfrids Primary School and the Burgess Hill Academy are within 0.7 mile.

The accommodation includes an entrance hall with stairs to the first floor, a coats cupboard and a cloakroom/wc leading off it. The kitchen faces the front with a range of cupboards and integrated cooking appliances. From the lounge/dining room there are double doors opening to the garden.

On the first floor landing there is a hatch to a loft space, an airing cupboard and overstairs cupboard. The master bedroom has built in wardrobes, there are 2 further bedrooms and a shower room.

Outside, a private driveway leads to a pitched roof garage with power and light. Pedestrian door to the north west facing 32' x 25' rear garden which is laid to block paving and lawn. Stepping stone pathway. The whole is enclosed by fencing and hedging.

Benefits include gas fired central heating (the Potterton boiler is located in the kitchen) and uPVC framed double glazed windows.

- Entrance Hall
- Cloakroom/WC
- Kitchen



# 29 Pepper Drive

Burgess Hill, West Sussex, RH15 9UZ

Burgess Hill is surrounded by picturesque countryside and historic landmarks; offering plenty of local amenities; with great connections via road, rail and air. The town centre offers a variety of shops, cafés and restaurants; there is a local cinema, playgrounds and parkland, sporting facilities including the popular Triangle Leisure Centre and clubs for anything from bowls to yoga. For families looking to move, Burgess Hill is an ideal choice with good schools, plenty of outside space and activities to keep families of all ages entertained. Well Connected There is so much within easy reach, from the city of Brighton, to historical Lewes, to the far reaching South Downs. Easy access to London and Brighton ensures family days out are popular and commuters are well catered for. There are frequent trains from Wivelsfield and Burgess Hill to London Gatwick, London Victoria, London Bridge, London St Pancras International and Brighton and it is just a short drive to access the A23 at Hickstead, from which it is a short drive to Brighton or north to Pease Pottage to pick up the M23 for the M25.

- Entrance Hall
- Cloakroom/WC
- Kitchen
- Lounge/Dining Room
- Shower Room
- Rear Garden
- Private Driveway
- Garage
- Council Tax Band D & EPC Rating D

**MANSELL  
McTAGGART**  
Trusted since 1947





## Mansell McTaggart Burgess Hill

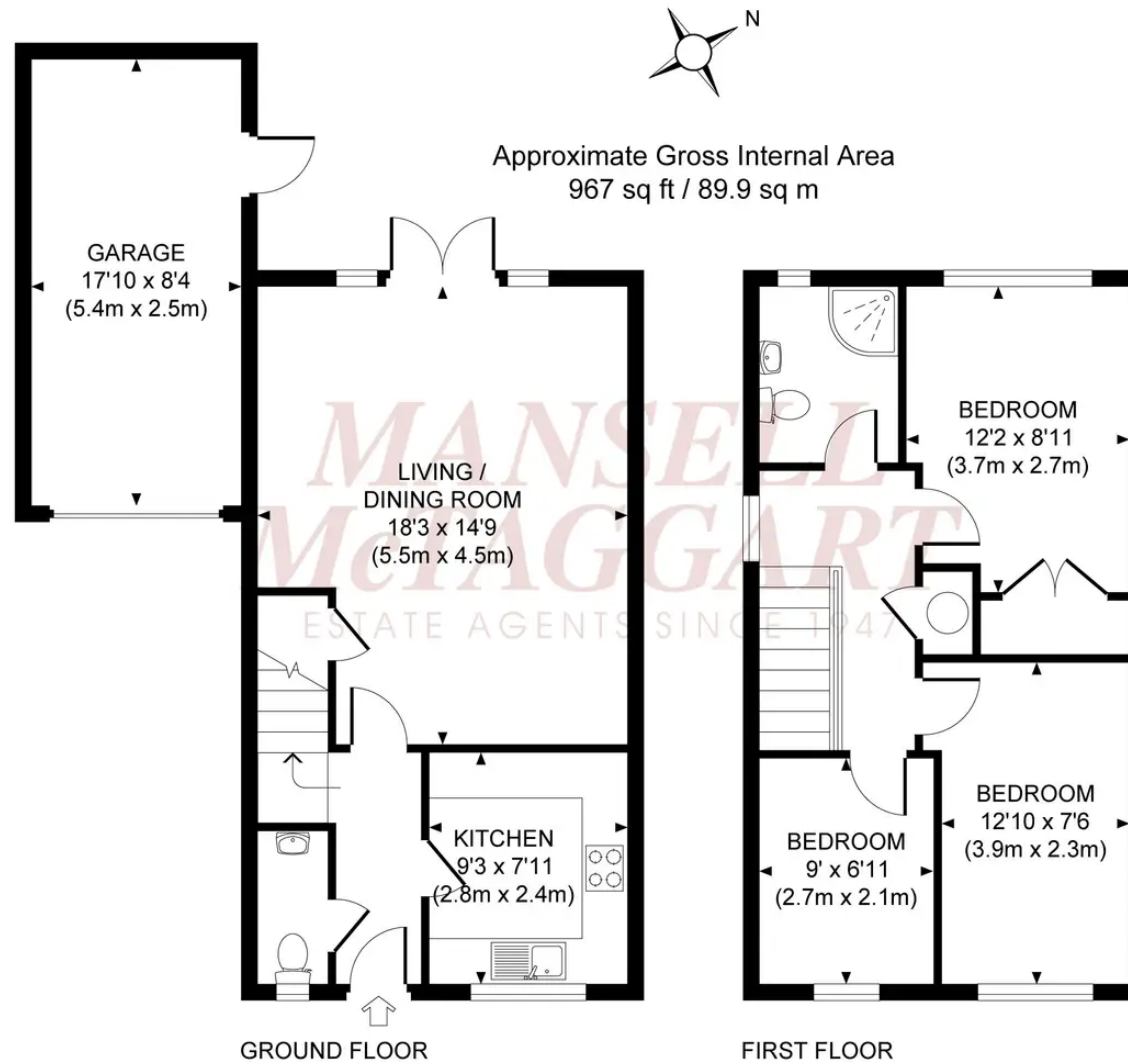
Mansell Mctaggart, 20 Station Road, Burgess Hill - RH15 9DJ

01444 235665

[bh@mansellmctaggart.co.uk](mailto:bh@mansellmctaggart.co.uk)

[www.mansellmctaggart.co.uk/branch/burgesshill](http://www.mansellmctaggart.co.uk/branch/burgesshill)

Consumer Protection from Unfair Trading Regulations 2008 We have not tested any apparatus, equipment, fixtures, fittings or services and so cannot verify that they are in working order or fit for purpose. You are advised to obtain verification from your solicitor or surveyor. References to the tenure of a property are based on information supplied by the seller. We have not had sight of the title documents and a buyer is advised to obtain verification from their solicitor. Items shown in photographs are not included unless specifically mentioned within the sales particulars, but may be available by separate negotiation.



## Mansell McTaggart Burgess Hill

Mansell Mctaggart, 20 Station Road, Burgess Hill - RH15 9DJ

01444 235665

[bh@mansellmctaggart.co.uk](mailto:bh@mansellmctaggart.co.uk)

[www.mansellmctaggart.co.uk/branch/burgesshill](http://www.mansellmctaggart.co.uk/branch/burgesshill)

Consumer Protection from Unfair Trading Regulations 2008 We have not tested any apparatus, equipment, fixtures, fittings or services and so cannot verify that they are in working order or fit for purpose. You are advised to obtain verification from your solicitor or surveyor. References to the tenure of a property are based on information supplied by the seller. We have not had sight of the title documents and a buyer is advised to obtain verification from their solicitor. Items shown in photographs are not included unless specifically mentioned within the sales particulars, but may be available by separate negotiation.