



Woodstock Road, NW11

£680 Per week

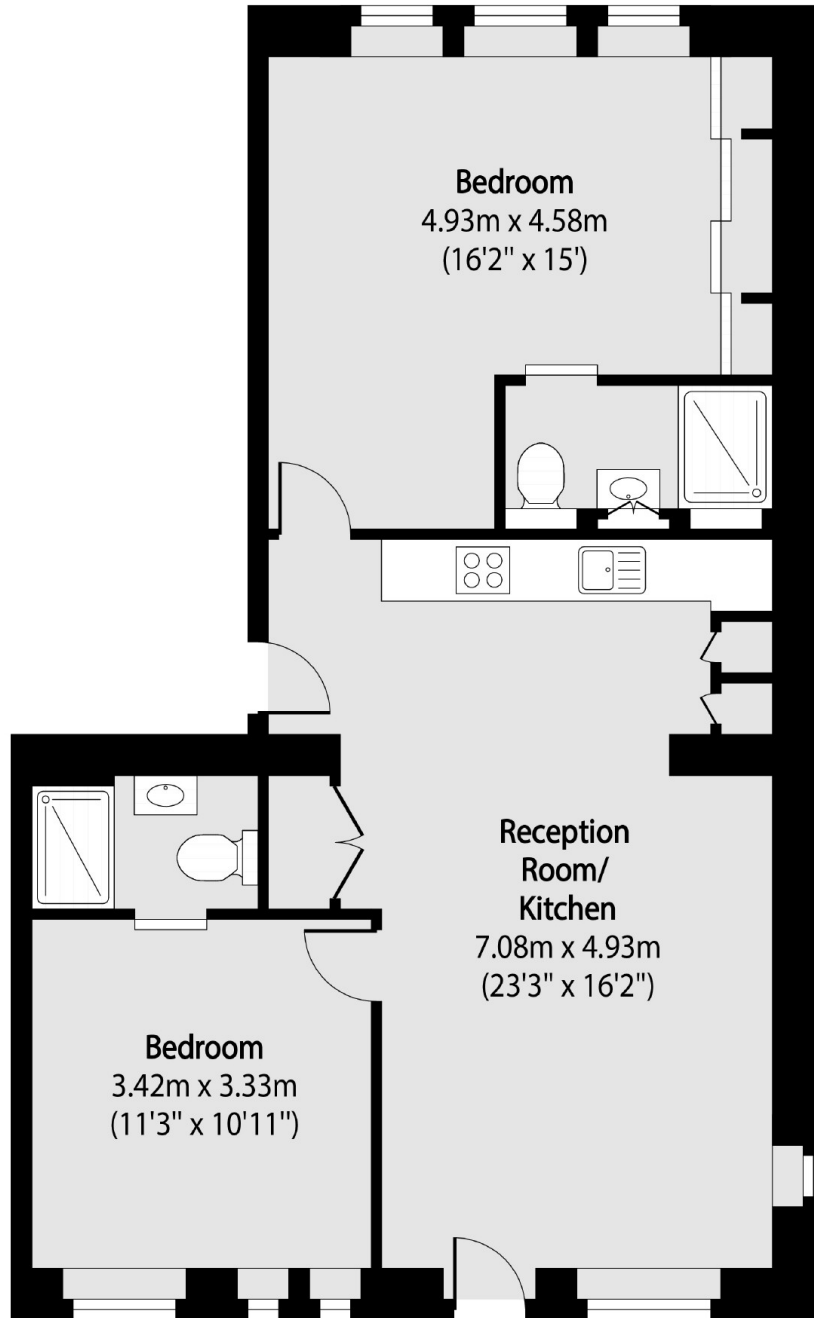
A newly completed and generously proportioned two bedroom flat arranged on the second floor, boasting access to a lovely communal garden and an excellent Golders Green location.

This property is situated moments from a range of amenities that can be found on Golders Green Road while Hampstead Heath and Golders Hill Park are also within close proximity.

Features

- Two Bedrooms
- Open-Plan Reception
- Kitchen
- En Suite Bedroom
- Modern
- Communal Garden

Woodstock Road,
London, NW11



Total area (approx): 69.05 sq m (743 sq. ft)