



Kilburn High Road, NW6

£692 Per week

A stunning one bedroom property with spacious rooms and large terrace close to excellent transport links. The apartment is set in a secluded development offering modern appliances, a spacious open plan living area, one double bedroom and terrace overlooking the green spaces of Kilburn Grange Park. Short let only, bills are inclusive within the rent.

The Arbor collection is a secluded gated development just moments from the Jubilee Line offering excellent access to the city.

Features

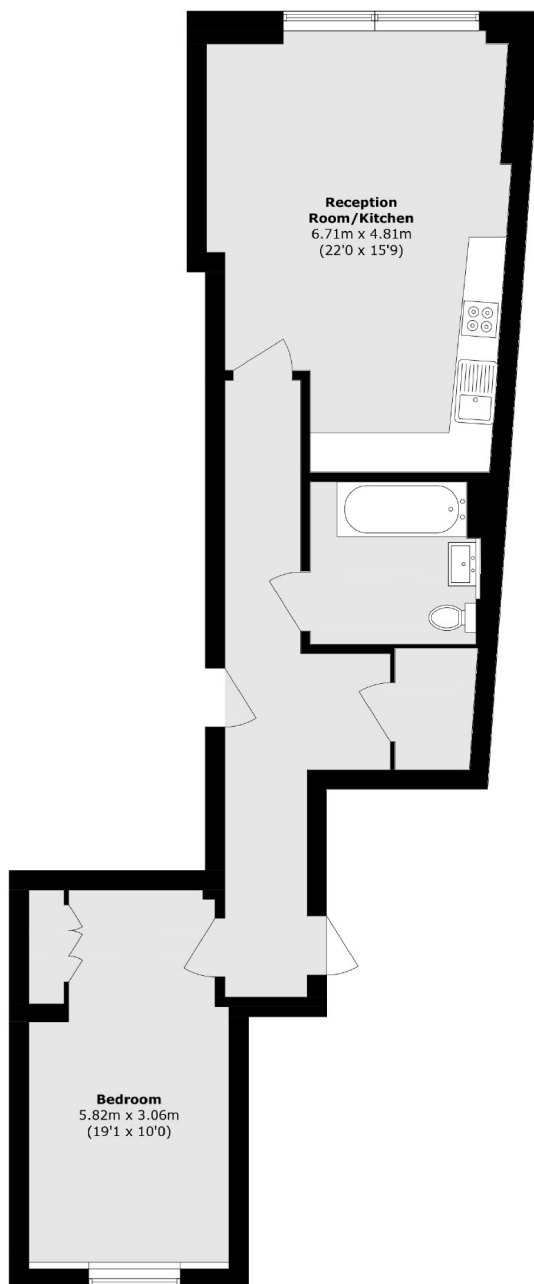
- Modern
- Bills Included
- Furnished
- Secluded Terrace
- Spacious
- Great Location



Kilburn High Road, NW6



Kilburn High Road, London, NW6



Total area (approx.): 70.0 sq. m (735.4 sq. ft)