



## Messina Avenue, NW6

£692 Per week

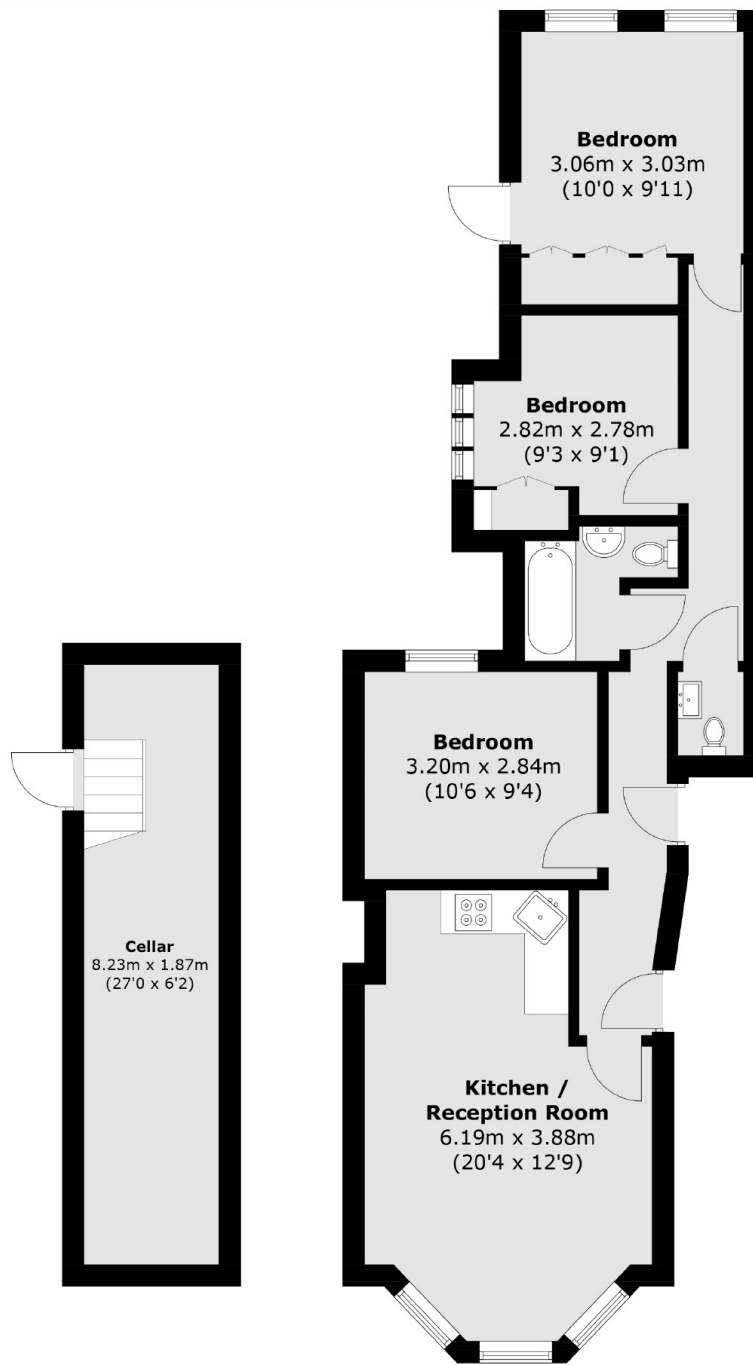
A three bedroom flat to let on the raised ground floor of a Victorian conversion in West Hampstead. The property has an open plan reception, bathroom with shower over the bath, three double bedrooms and a patio garden.

Overlooking Kilburn Grange Park and tennis courts, it is well located within a mile of both Kilburn and West Hampsteads underground and overland stations and their respective areas local amenities.

### Features

- Three Bedroom
- Patio Garden
- Open Plan
- Built-in Storage
- Local Amenities
- West Hampstead Station

# Messina Avenue, London, NW6



**Lower Ground Floor**

**Ground Floor**

Total area (approx.): 79.9 sq. m (859.9 sq. ft)

## Dexters

West Hampstead Lettings  
106 West End Lane  
London  
NW6 2LS  
Sales  
020 7644 9300

Energy Rating: D. We aim to make our particulars both accurate and reliable. However they are not guaranteed; nor do they form part of an offer or contract. If you require clarification on any points then please contact us, especially if you're traveling some distance to view. Please note that appliances and heating systems have not been tested and therefore no warranties can be given as to their good working order.

 **RICS** | Regulated  
Estate Agent  
and Letting Agent

[dexters.co.uk](https://www.dexters.co.uk)