



Broadhurst Gardens, NW6

£646 Per week

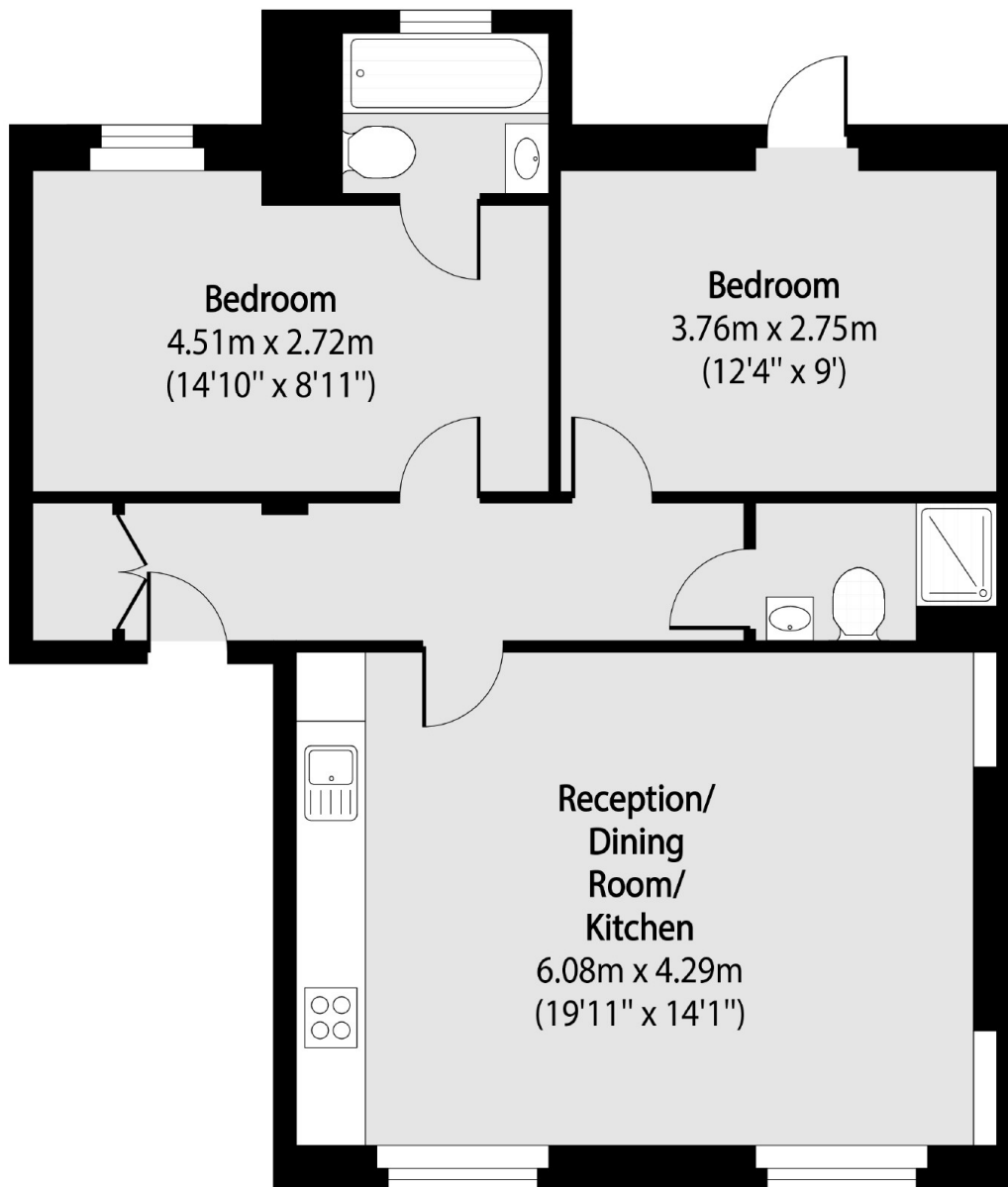
A modern two double bedroom, two bathroom apartment. The property benefits from a private large terrace, en-suite bathroom and open plan living and kitchen area.

Situated for local transport links at West Hampstead and Finchley Road, with convenient access to many fashionable cafes and local amenities of West End Lane.

Features

- Two Bedroom
- Two Bathroom
- Wooden Floors
- Great Location
- Large Terrace
- Open Plan Living/Kitchen

Broadhurst Gardens,
London, NW6



Total area (approx): 63.62 sq m (685 sq. ft)