



Fordwych Road, NW2

£507 Per week

A two double bedroom, two bathroom apartment with open-plan kitchen, wood flooring, high ceilings and two bay windows on the ground floor of a period conversion.

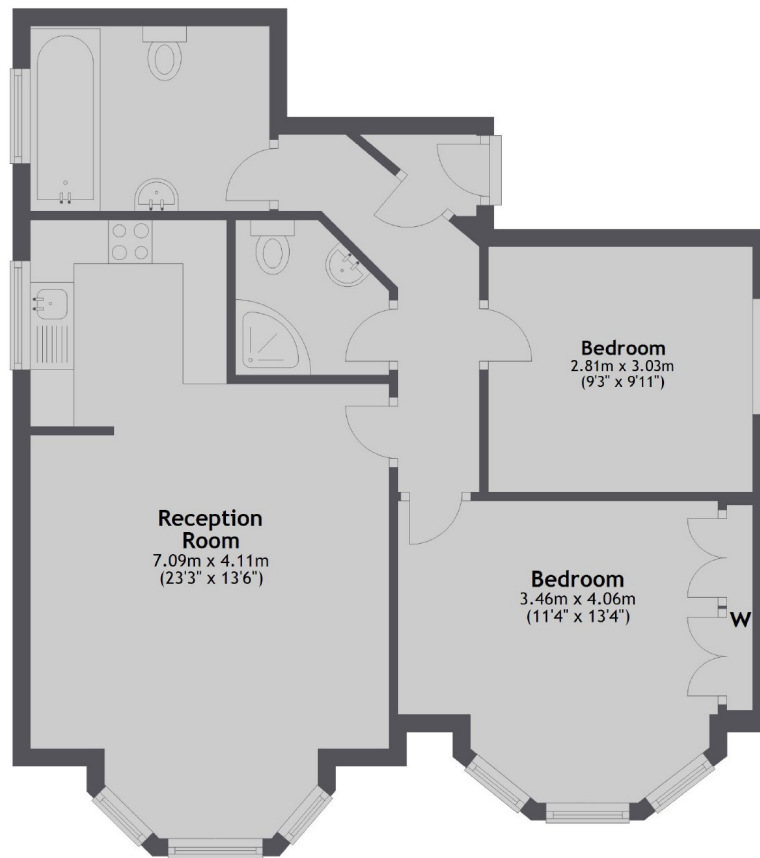
Located on the West Hampstead borders being less than half a mile to West End Lane and Kilburn tube is just around the corner.

Features

- Two Double Bedrooms
- Bright Reception
- Open Plan Kitchen
- Period Conversion
- Two Bathrooms
- Two Bathrooms

Fordwych Road,
London, NW2

Ground Floor



Total area: approx. 60.3 sq. metres (648.6 sq. feet)