



Finchley Road, NW11

£576 Per week

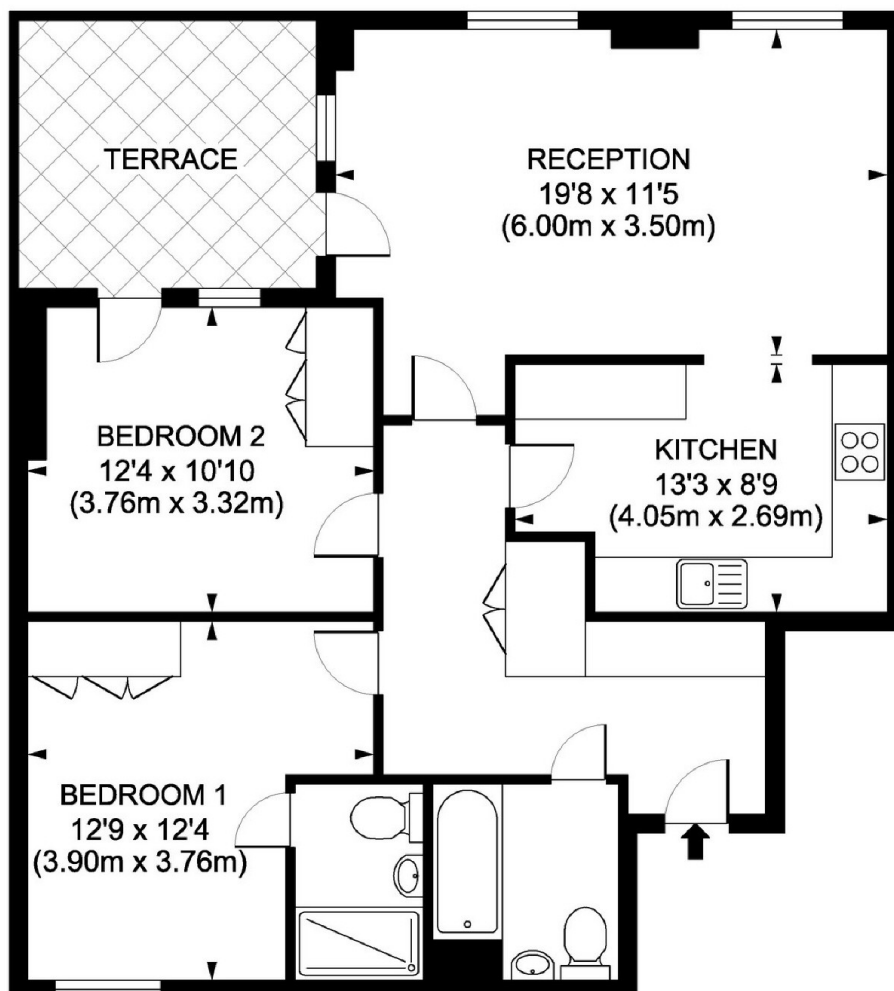
Set on the 4th floor (with a lift) of this new development is this two double bedroom two bathroom apartment with a sunny terrace that has amazing views. Underground parking also included.

Close to Golders Green tube, Cricklewood Thameslink and a number of bus routes on the doorstep. There is also the open spaces of Hampstead Heath and Golders Hill Park close by.

Features

- Two Bedrooms
- New Development
- Two Bathrooms
- Terrace
- Wood Floors
- Underground Parking

Finchley Road, London, NW11



FOURTH FLOOR

Goldfinch Court London, NW6
Gross Internal Area 840 sq ft/78 sq metres

Whilst every attempt has been made to ensure the accuracy of the floorplan shown, all measurements, positioning fixtures, fittings and any other data shown are an approximate interpretation for illustrative purposes only and are not to scale. No responsibility is taken for any error, omission, miss-statement or use of data shown.

Dexters

West Hampstead Lettings
106 West End Lane
London
NW6 2LS
Lettings
020 7644 9301

Energy Rating: . We aim to make our particulars both accurate and reliable. However they are not guaranteed; nor do they form part of an offer or contract. If you require clarification on any points then please contact us, especially if you're traveling some distance to view. Please note that appliances and heating systems have not been tested and therefore no warranties can be given as to their good working order.



dexters.co.uk