



Lymington Road, NW6

£726 Per week

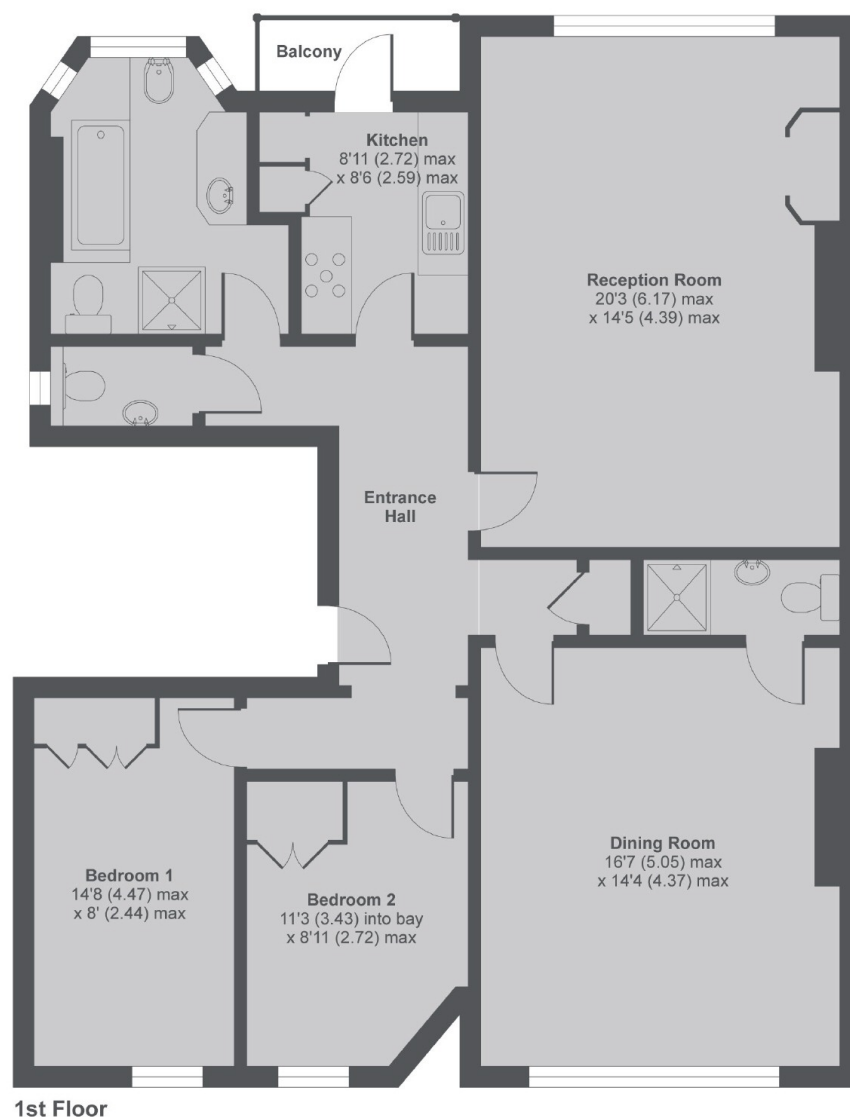
A bright three bedroom first floor apartment with balcony. There is a spacious master bedroom with en-suite shower room, two further double bedrooms and a large reception with space for dinning making it perfect for entertaining. Perfect for professional sharers.

Located ideally for West End Lane's pubs and restaurants, Saturday lunch time you can grab a bite to eat at 'Banana Tree' or pick up some organic fruit and veg at the well known farmers market on a Sunday.

Features

- Three Bedrooms
- Two Bathrooms
- Balcony
- First Floor
- Separate Kitchen
- Great Location

Lymington Road, London, NW6



Lymington Road, NW6

MAIN HOUSE APPROX FLOOR AREA 1129 SQ.FT 104.9 SQ.M

Copyright nichecom.co.uk 2017 Produced for Dexters REF : 174493

Dexters

West Hampstead Lettings
106 West End Lane
London
NW6 2LS
Lettings
020 7644 9301

Energy Rating: D. We aim to make our particulars both accurate and reliable. However they are not guaranteed; nor do they form part of an offer or contract. If you require clarification on any points then please contact us, especially if you're traveling some distance to view. Please note that appliances and heating systems have not been tested and therefore no warranties can be given as to their good working order.

 **RICS** | Regulated
Estate Agent
and Letting Agent

dexters.co.uk