



Fordwych Road, NW2

£496 Per week

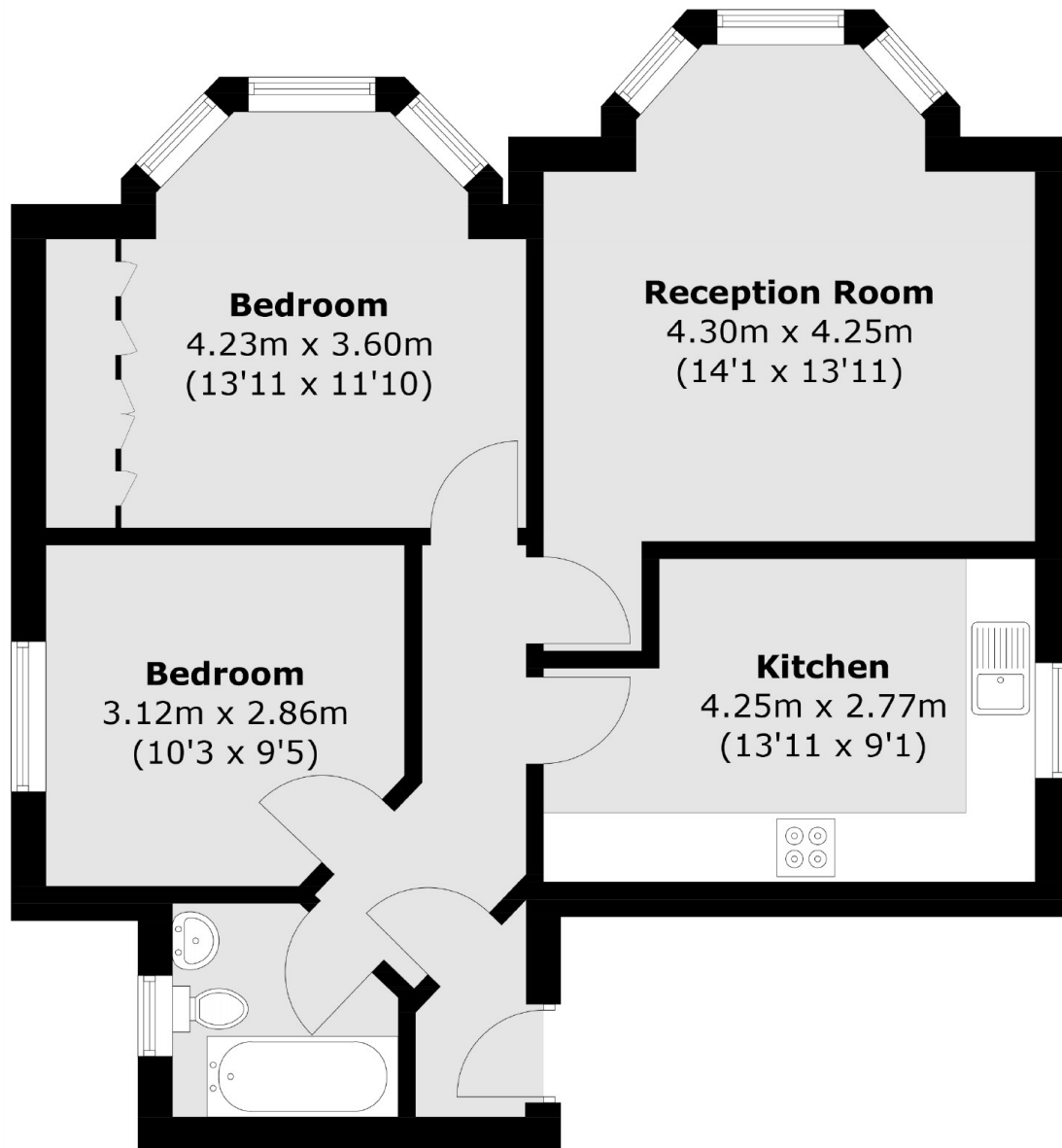
A modern one bedroom apartment on the ground floor of a period conversion. The flat has a spacious living room, separate kitchen and double bedroom with ample storage. Perfect for a professional couple or a single.

Located on the West Hampstead borders being less than half a mile to West End Lane and Kilburn tube is just around the corner.

Features

Period Conversion
Ground Floor
One Double Bedroom
Separate Kitchen
Wooden Floors
Modern

Fordwych Road,
London, NW2



Total area (approx.): 61.3 sq. m (659.8 sq. ft)

Dexters

West Hampstead Lettings
106 West End Lane
London
NW6 2LS
Lettings
020 7644 9301

Energy Rating: . We aim to make our particulars both accurate and reliable. However they are not guaranteed; nor do they form part of an offer or contract. If you require clarification on any points then please contact us, especially if you're traveling some distance to view. Please note that appliances and heating systems have not been tested and therefore no warranties can be given as to their good working order.

 **RICS** | Regulated
Estate Agent
and Letting Agent

dexters.co.uk