



Goldhurst Terrace, NW6

£650 Per week

A large two double bedroom apartment in this converted Victorian house on one of South Hampstead's best roads. The property has a spacious living room, two bathrooms, separate kitchen and lots of natural light throughout.

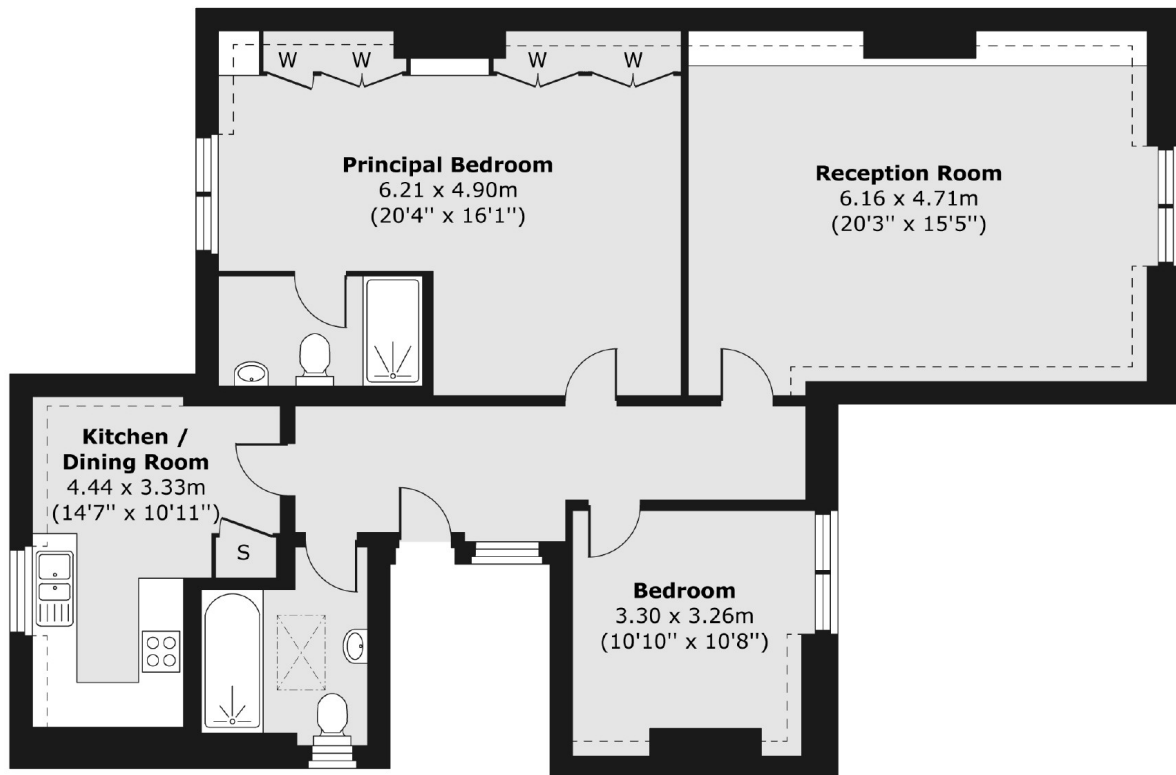
Goldhurst Terrace is a lovely residential street in South Hampstead situated within easy access of both West End Lane and Finchley Road station for the Jubilee and Metropolitan Lines.

Features

- Two Double Bedrooms
- Two Bathrooms
- Large Living Room
- Victorian house
- Built In Storage
- South Hampstead

Goldhurst Terrace, London, NW6

Second Floor



Total area (approx.) 101.22 sq. m (1,090 sq. ft)