



Greencroft Gardens, NW6

£1,026 Per week

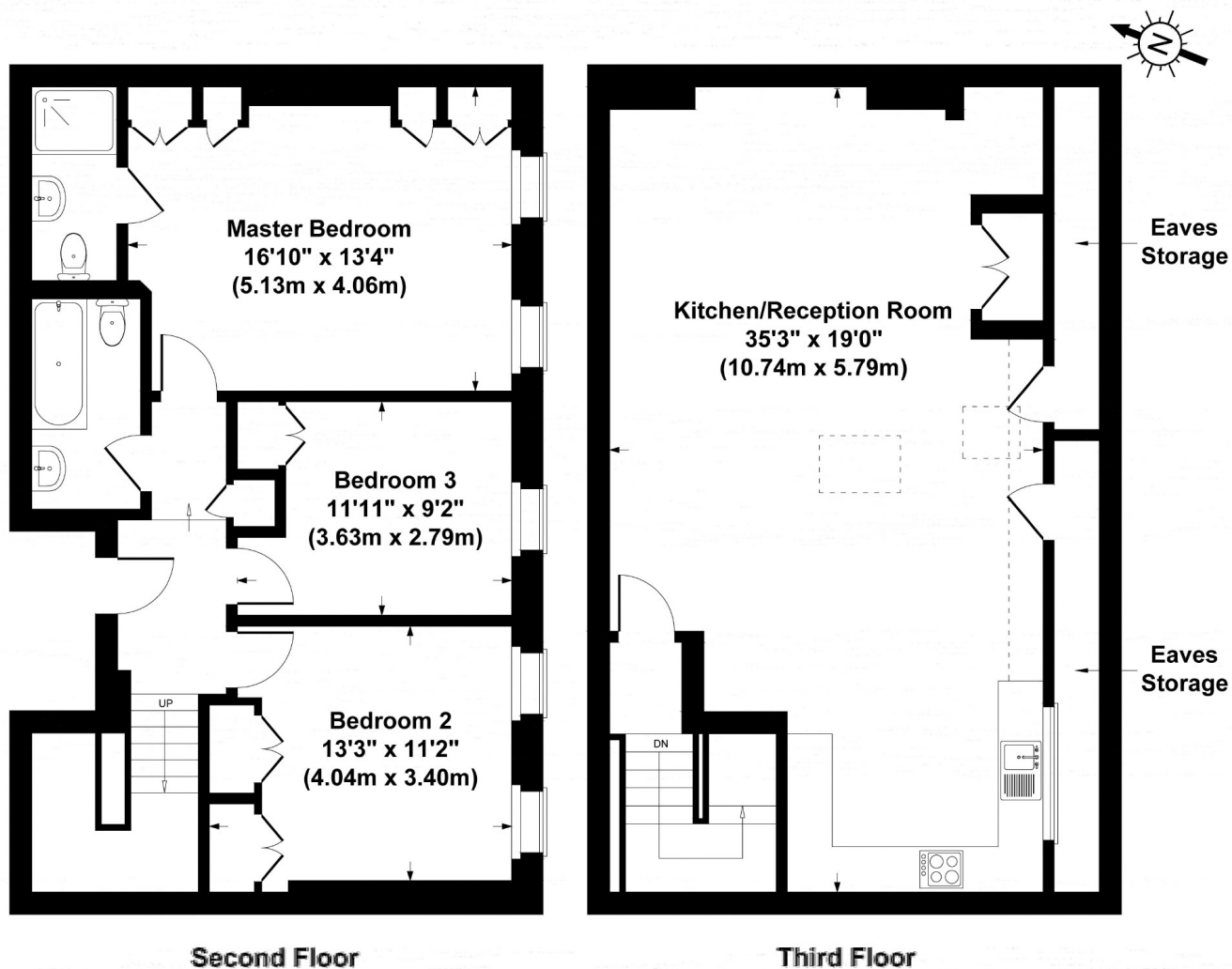
This stunning three double bedroom duplex apartment is finished to a high standard. It features an open-plan reception/kitchen with a balcony, two contemporary bathrooms, and wardrobes in all bedrooms and is located in a sought-after area.

Greencroft Gardens is one of the most desirable roads in the NW6 postcode, located within the South Hampstead conservation area. It offers easy access to both Finchley Road and West End Lane.

Features

- Water Filter System
- Three Double Bedrooms
- Two Bathrooms
- Duplex
- Air Con
- Balcony

Greencroft Gardens, London, NW6



Greencroft Gardens, NW6

Gross Internal Area 1453 sq ft / 135 sq metres

Not to Scale. Produced by The Plan Portal 2022

For Illustrative Purposes Only.

Dexters

West Hampstead Lettings
106 West End Lane
London
NW6 2LS
Lettings
020 7644 9301

Energy Rating: . We aim to make our particulars both accurate and reliable. However they are not guaranteed; nor do they form part of an offer or contract. If you require clarification on any points then please contact us, especially if you're traveling some distance to view. Please note that appliances and heating systems have not been tested and therefore no warranties can be given as to their good working order.

 **RICS** | Regulated
Estate Agent
and Letting Agent

dexters.co.uk