



Smyrna Road, NW6

£550 Per week

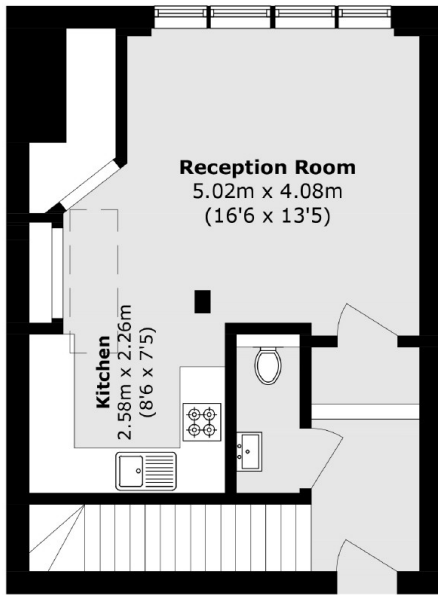
A modern two bedroom property with an open-plan living and entertaining space. The property boasts a private terrace accessed from both bedrooms, a modern bathroom, second down stairs WC and wood flooring throughout.

Set within a modern development in a quiet residential location, Smyrna Road is close to the brilliant transport links of West Hampstead plus its popular range of cafes, shops and restaurants. Nearby Kilburn high street also offers an excellent range of shopping facilities.

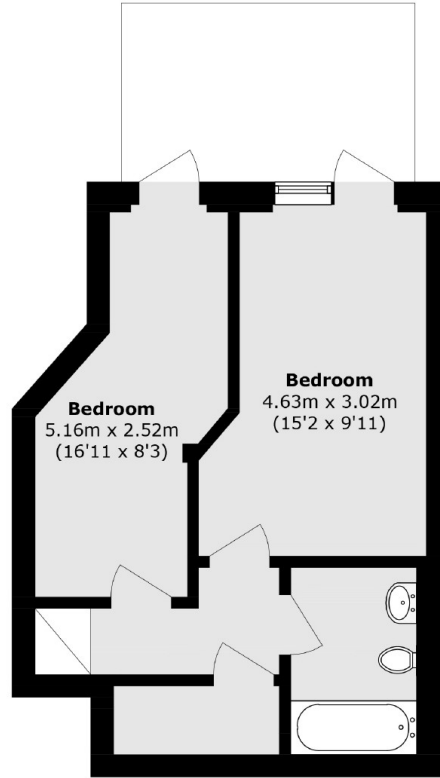
Features

- Split Level
- Private terrace
- Modern
- Good Location
- Wood Floors
- Two Bedrooms

Smyrna Road,
London, NW6



Ground Floor



Lower Ground Floor

Total area (approx.): 72.1 sq. m (776.1 sq. ft)