



## Cavendish Close, NW6

£692 Per week

A beautifully presented three double bedroom duplex apartment with a private balcony overlooking the communal gardens. The apartment benefits from a bright reception and separate kitchen.

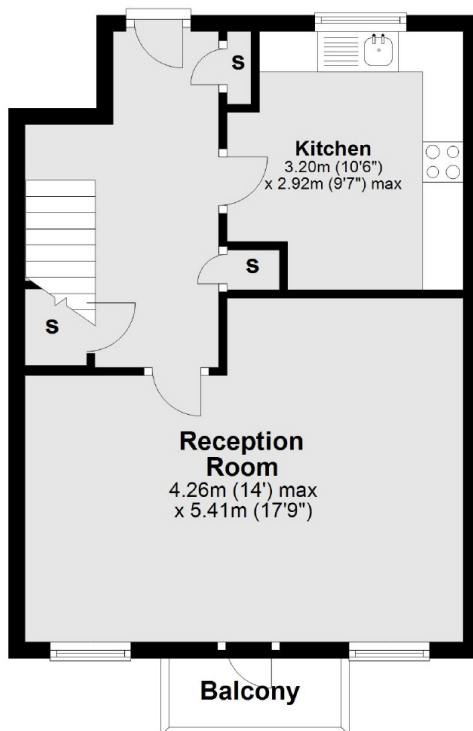
The property is located in the popular Brondesbury area which offers great transport links through Kilburn Underground (Jubilee Line) and Brondesbury overground station.

### Features

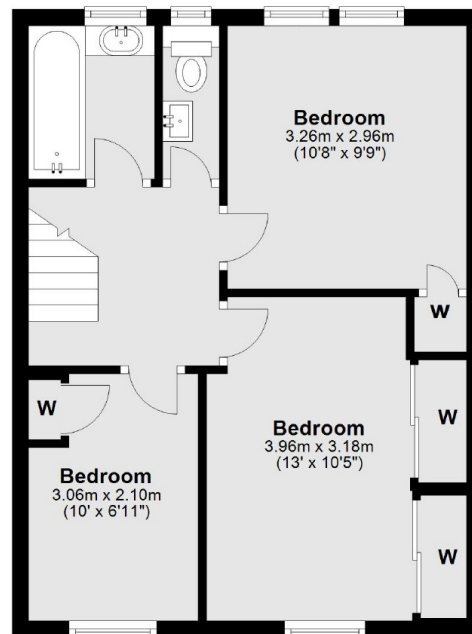
- Three Double Bedrooms
- Bright Reception
- Separate Kitchen
- Duplex
- Juliette Balcony
- Communal Gardens

# Cavendish Close, London, NW6

**First Floor**



**Second Floor**



Total area: approx. 79.5 sq. metres (855.5 sq. feet)

## Dexters

West Hampstead Lettings  
106 West End Lane  
London  
NW6 2LS  
Lettings  
020 7644 9301

Energy Rating: D. We aim to make our particulars both accurate and reliable. However they are not guaranteed; nor do they form part of an offer or contract. If you require clarification on any points then please contact us, especially if you're traveling some distance to view. Please note that appliances and heating systems have not been tested and therefore no warranties can be given as to their good working order.

 **RICS** | Regulated  
Estate Agent  
and Letting Agent

[dexters.co.uk](http://dexters.co.uk)