



## Finchley Road, NW11

£403 Per week

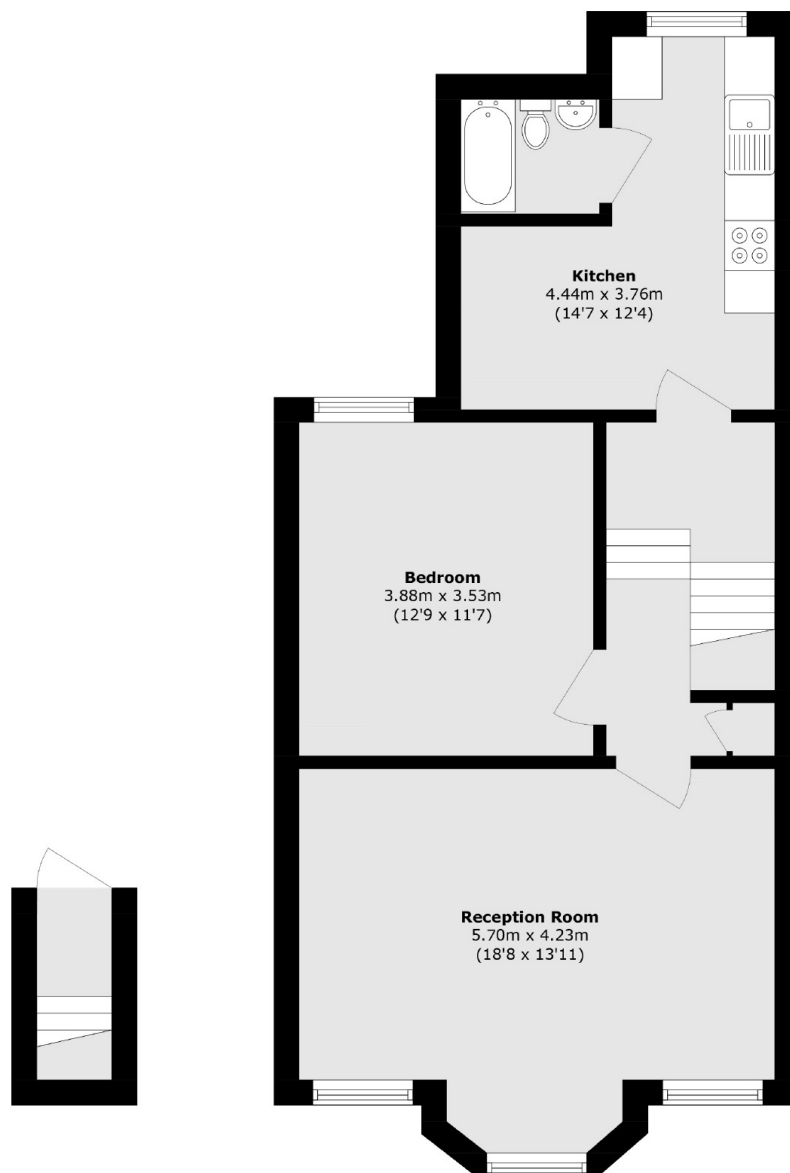
A large one bedroom property with wooden flooring throughout close to the Northern line. The property boasts a sizeable living room, fully fitted kitchen including dish washer and spacious double bedroom.

Situated in the heart of Temple Fortune there are a number of excellent transport links offering quick access into the city and a number of popular cafés and convenience stores such as Marks and Spencer.

### Features

Large One Bedroom  
Wooden Floors  
Fully Fitted Kitchen  
Good Location  
Spacious Lounge

Finchley Road,  
London, NW11



Total area (approx.): 63.0 sq. m (678.1 sq. ft)

**Dexters**

West Hampstead Lettings  
106 West End Lane  
London  
NW6 2LS  
Lettings  
020 7644 9301

Energy Rating: D. We aim to make our particulars both accurate and reliable. However they are not guaranteed; nor do they form part of an offer or contract. If you require clarification on any points then please contact us, especially if you're traveling some distance to view. Please note that appliances and heating systems have not been tested and therefore no warranties can be given as to their good working order.

 **RICS** | Regulated  
Estate Agent  
and Letting Agent

[dexters.co.uk](https://www.dexters.co.uk)