



Honeybourne Road, NW6

£395 Per week

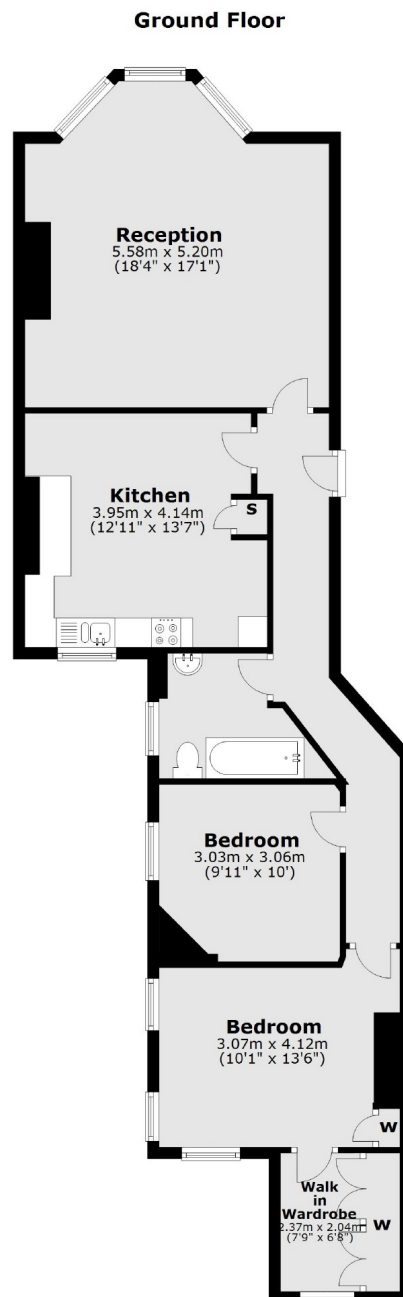
A spacious two double bedroom ground floor apartment in this popular mansion block with access to the communal garden. There is a large reception and a separate eat in kitchen.

Located on this quiet residential street running parallel to West End Lane where you can enjoy that well earned drink at The Alice House around the corner.

Features

- Two Double Bedrooms
- Eat-In Kitchen
- Spacious Reception
- Communal Garden
- Walk In Wardrobe
- Mansion Block

Honeybourne Road, London, NW6



Total area: approx. 85.9 sq. metres (924.7 sq. feet)

Contact

To arrange a viewing call our office on the number below or visit our website.



Energy Rating: D. We aim to make our particulars both accurate and reliable. However they are not guaranteed; nor do they form part of an offer or contract. If you require clarification on any points then please contact us, especially if you're traveling some distance to view. Please note that appliances and heating systems have not been tested and therefore no warranties can be given as to their good working order.